

M.G.S. 28M
 X=671950.07
 Y=473717.48

Monumented. Baseline. \bar{y}
 The New York, New Haven and Hartford Railroad Co.
 R.R. S.B.
 X=672126.42
 Y=473911.69

Traverse.
 Lots 11 and 12.

Bearing	Dist.	N.	S.	E.	W.
N45°15'57" E	110.00	77.42		78.14	
S35°20'58" E	185.05		150.93	107.06	
S49°41'48" W	100.00		64.68		76.26
N38°15'00" W	175.97	138.19			108.94
		215.61	215.61	185.20	185.20

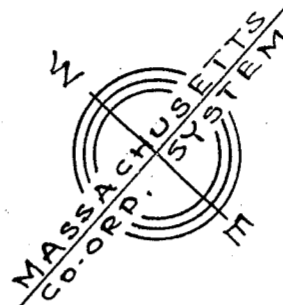
GUILD RD.

ST.

ST.

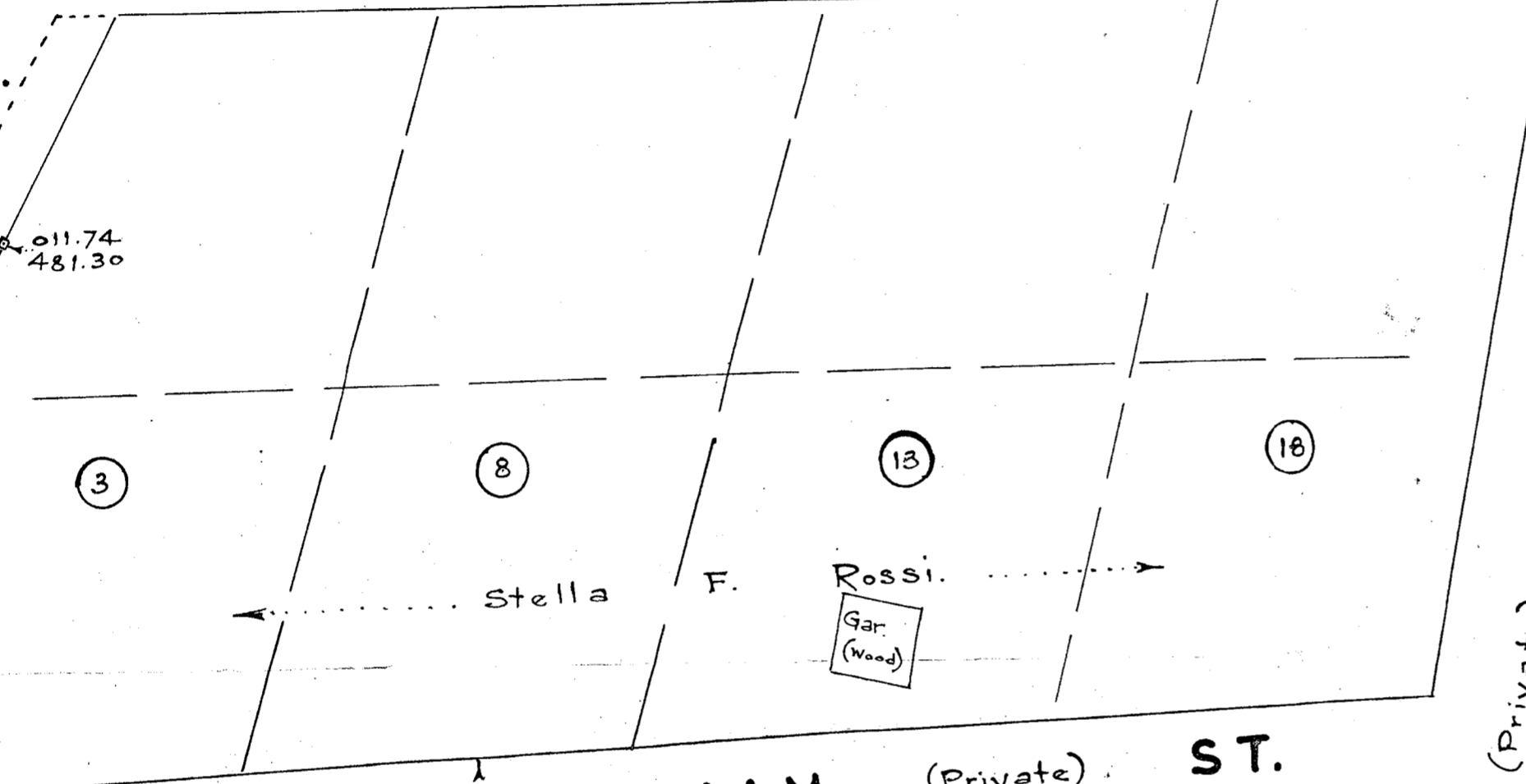
CROSS

Ld. Ct. Plan 18430.



X=672500

(Town 1720-40 wide)
 old street line



PUTNAM (Private) ST.

WEBSTER

(Private)

ST.

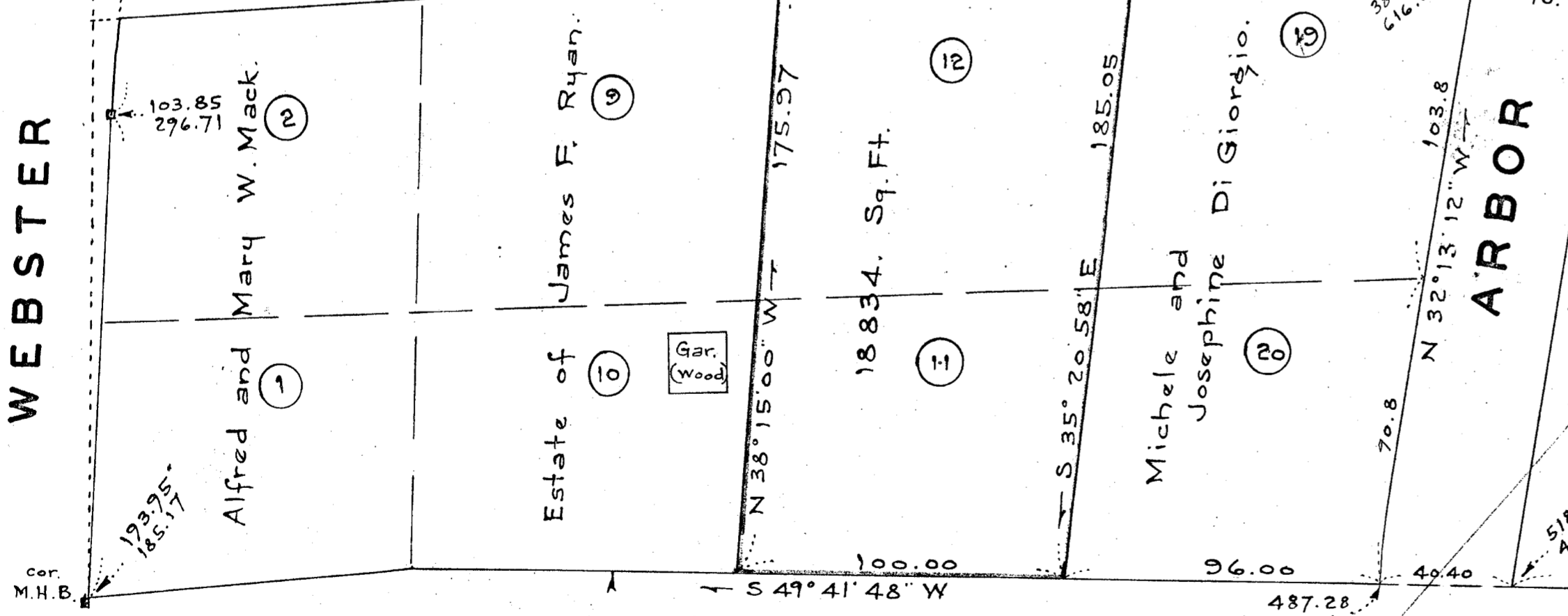
Ld. Ct. Case # 22488 (Pending)

Plan of Land in
NEEDHAM, MASS.

Scale: 1 in. = 40 ft. Cheney Engineering Co. Under The Subdivision
 Needham, Mass. Minor Law NOT Required.
 July 9, 1957.



Planning Board
 Date _____



HIGHLAND

AVE.

(State - 1901.)

I certify that this survey was made in
 accordance with Land Court Instructions
 of 1950. Frank L. Cheney
 Civil Engineer.

(See plan filed Bk. 729, Pg. 640 for lot numbers.)