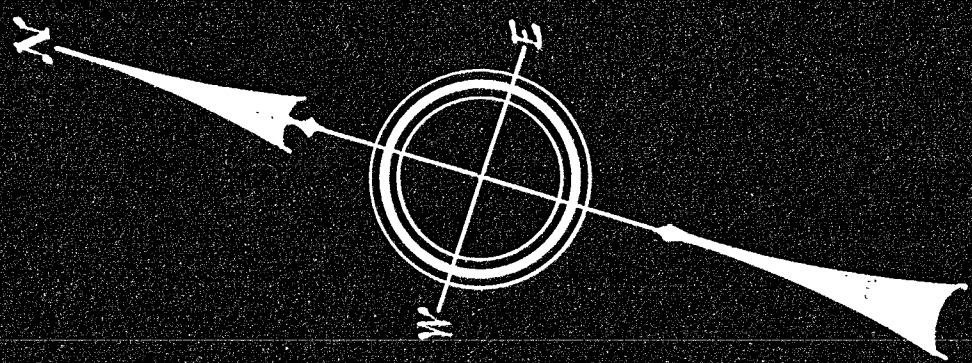


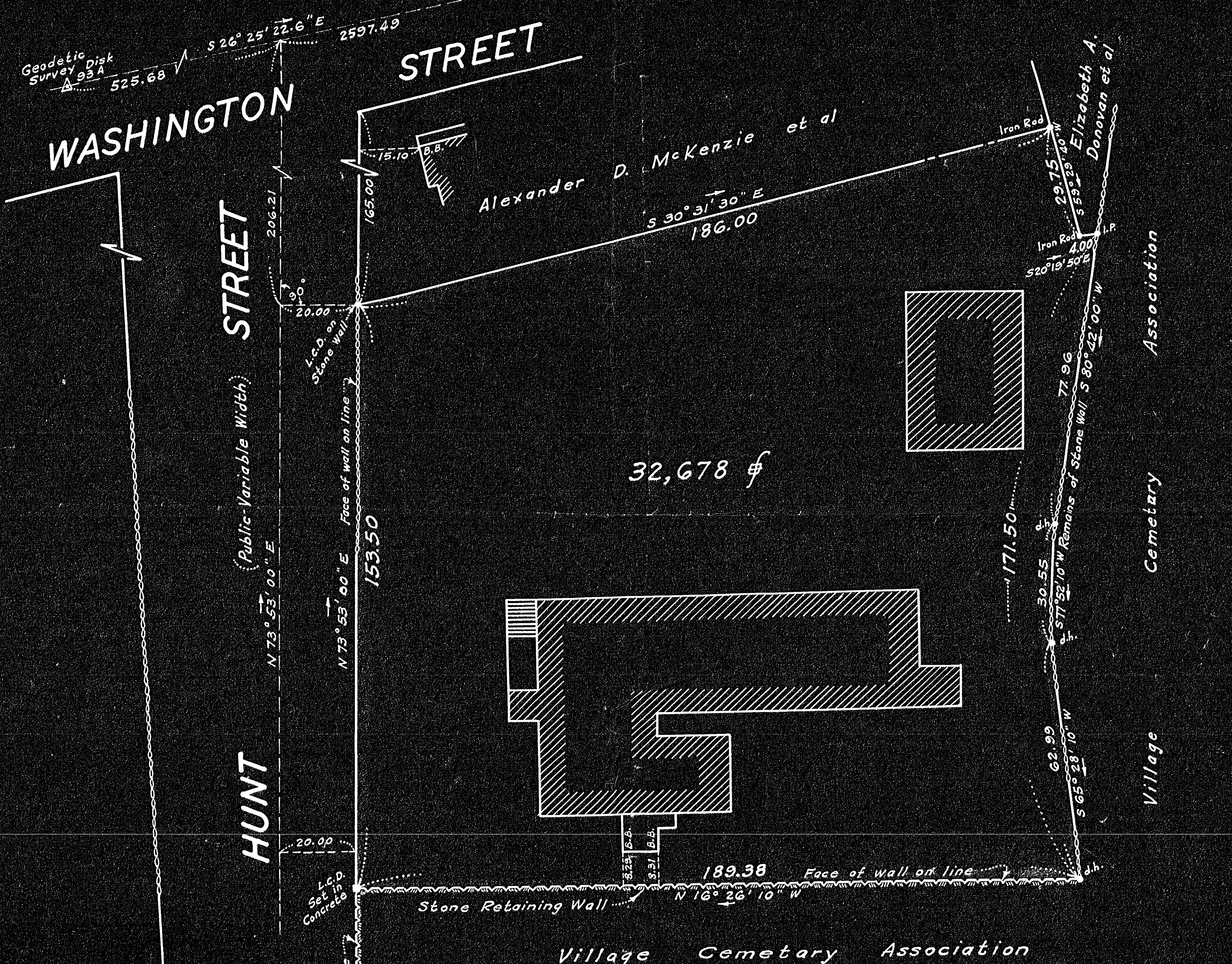
# PLAN OF LAND IN WEYMOUTH, MASS.

Scale 1" = 20' April 8, 1957

Land Surveys, Inc.  
11 Pemberton Square  
Boston, Mass.



Geodetic Survey Disk 93 B



32,678 sq

4/15/57

*Frank L. Hale*  
Sec.

Approval under Subdivision Control  
Law not required

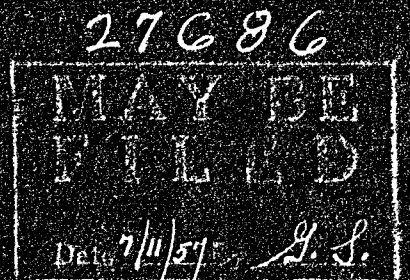
WEYMOUTH PLANNING BOARD

### TRAVERSE

Bearings	Dist.	N	S	E	W
N73°53'00"E	153.50	42.611		147.467	
S30°31'30"E	186.00		160.222	94.472	
S53°29'40"W	29.75		15.102		25.632
S20°13'50"E	4.00		3.751	1.390	
S80°42'00"W	77.96		12.600		76.935
S77°52'10"W	30.55		6.420		29.868
S65°28'10"W	62.99		26.152		57.305
N16°26'10"W	189.38	181.641			53.584
		224.252	224.247	243.329	243.324

I certify that this survey was made on the ground in accordance with the Land Court instructions of 1950 on April 6, 1957

*Dana R. Perkins*  
R.L.S. # 3595



Weymouth Plate 24