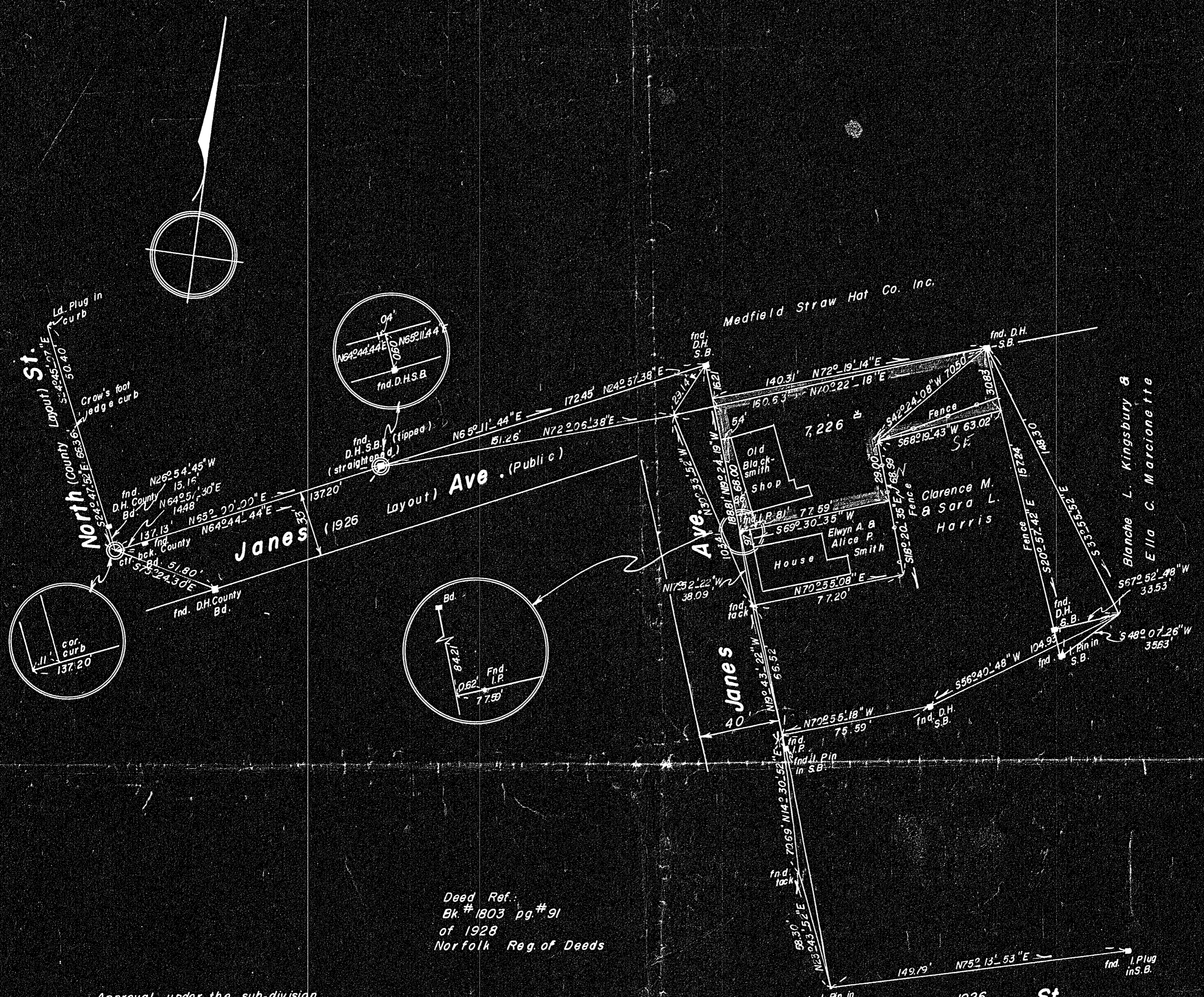


27684

21793



Deed Ref.
 Bk. # 1803 pg. # 91
 of 1928
 Norfolk Reg. of Deeds

Approval under the sub-division control law not required
 Medfield Planning Board.
 Charles C. Quinn
 Date: June 13, 1957

I certify that this actual survey was made on the ground in accordance with the Land Court Instructions of 1950 on or between 4/8/57 and 4/12/57
 Date: June 10, 1957 Joseph H. Pego
 20 Washington St. Natick, Mass.

Plan of Land in Medfield, Mass.

Owned by: **McCarthy**



Scale: 1" = 40'

June 4, 1957

Survey by: **MacCarthy Engineering Service Inc.**
Natick, Mass.

DECREE PLAN
Order Papers
Reverse filed <i>yes</i>
File
Index
Approved

27684
 MADE FILED
 Date 7/11/57 By *R.H.*
 NOR. P. 38

27684

21793