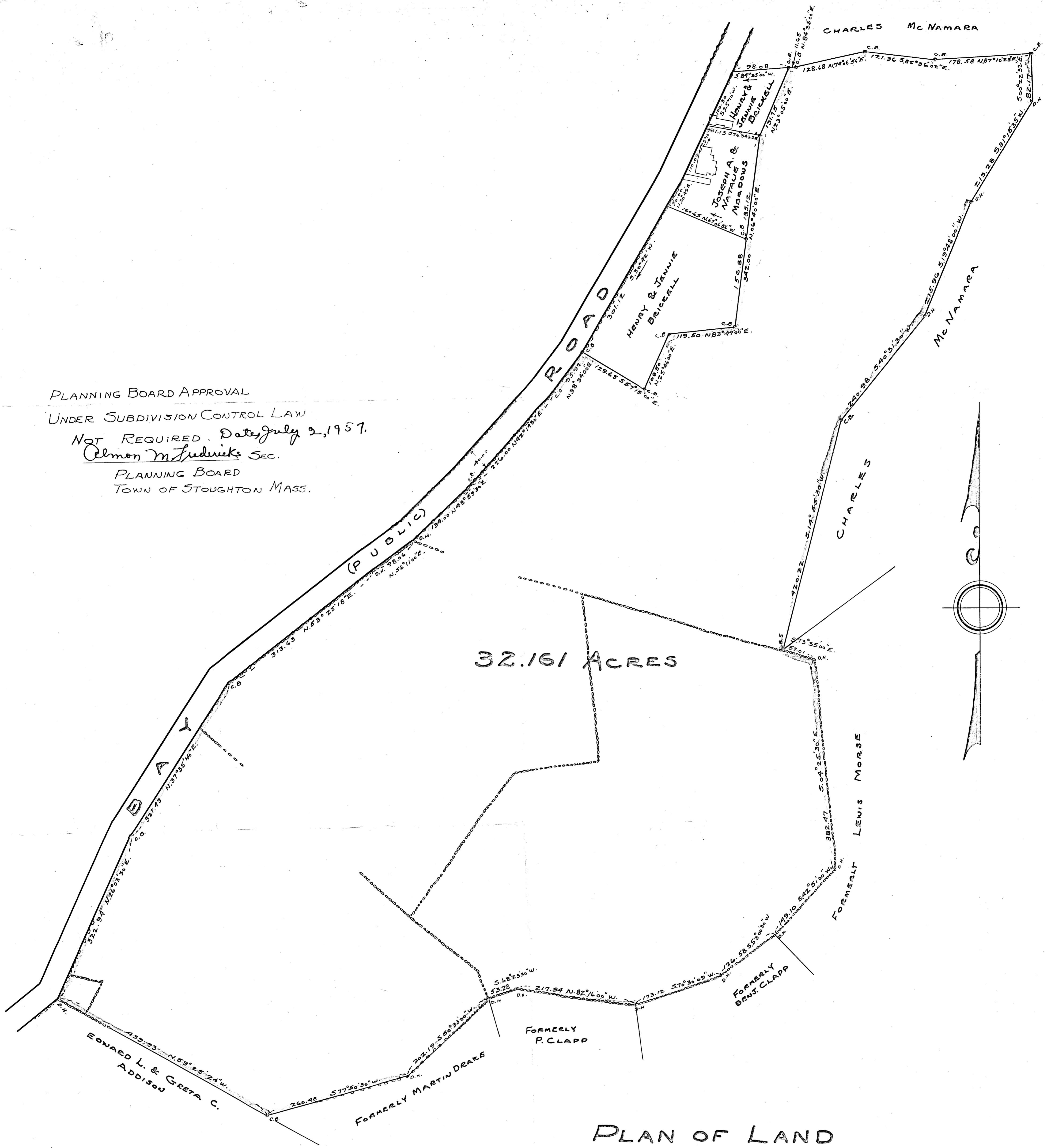


PLANNING BOARD APPROVAL  
 UNDER SUBDIVISION CONTROL LAW  
 NOT REQUIRED. Dated July 2, 1957.  
 Olmon M. Ludwicks Sec.  
 PLANNING BOARD  
 TOWN OF STOUGHTON MASS.



32.161 ACRES

PLAN OF LAND  
 IN  
 STOUGHTON MASS.  
 BELONGING TO  
 HENRY & JENNIE BRICKELL

SCALE 1"=80' JAN. 11 1957

EDWARD C. PETERSON REG. PROF. ENG.  
 74 LINCOLN ST. STOUGHTON MASS.

DIST.	BEARING	LATITUDE		DEPARTURE	
		N	S	E	W
82.17	S.00° 22' 32" E.		82.17	0.54	
213.28	S.31° 15' 35" W.		182.32		110.67
215.96	S.19° 48' 00" W.		203.19		73.15
240.98	S.40° 31' 30" W.		183.18		156.58
420.22	S.14° 55' 30" W.		406.04		108.23
57.01	S.73° 35' 00" E.		16.12	54.69	
382.47	S.04° 25' 30" E.		381.33	29.51	
149.10	S.42° 51' 00" W.		109.31		101.40
126.58	S.53° 00' 30" W.		76.16		101.10
173.12	S.70° 30' 09" W.		57.78		163.19
217.94	N.82° 16' 00" W.	29.32			215.96
53.28	S.68° 23' 30" W.		19.62		49.54
207.19	S.50° 33' 00" W.		128.47		156.12
260.48	S.77° 50' 30" W.		54.86		254.64
439.93	N.59° 25' 24" W.	223.79			378.76
322.94	N.26° 03' 30" E.	290.11		141.86	
321.43	N.37° 35' 40" E.	254.69		196.10	
313.63	N.53° 25' 18" E.	186.90		251.86	
98.06	N.56° 11' 00" E.	54.57		81.47	
134.00	N.48° 59' 30" E.	87.93		101.12	
226.00	N.42° 14' 30" E.	167.31		151.93	
95.97	N.38° 34' 00" E.	75.04		59.83	
129.65	S.57° 15' 00" E.		70.14	109.04	
108.50	N.25° 46' 00" E.	97.71		47.17	
119.50	N.83° 47' 00" E.	12.94		118.79	
342.00	N.06° 40' 00" E.	339.69		39.70	
131.75	N.23° 05' 00" E.	121.20		51.66	
111.65	N.84° 35' 00" E.	1.10		116.00	
128.68	N.74° 06' 56" E.	35.22		123.76	
121.36	S.82° 34' 02" E.		15.63	120.35	
178.58	N.87° 10' 23" E.	8.80		178.26	
		1986.32	1986.32	1869.34	1869.34

I CERTIFY THAT THIS PLAN WAS  
 MADE IN ACCORDANCE WITH THE  
 LAND COURT INSTRUCTIONS OF 1950  
 JAN. 11 1957 Edward C. Peterson  
 74 LINCOLN ST. STOUGHTON MASS.