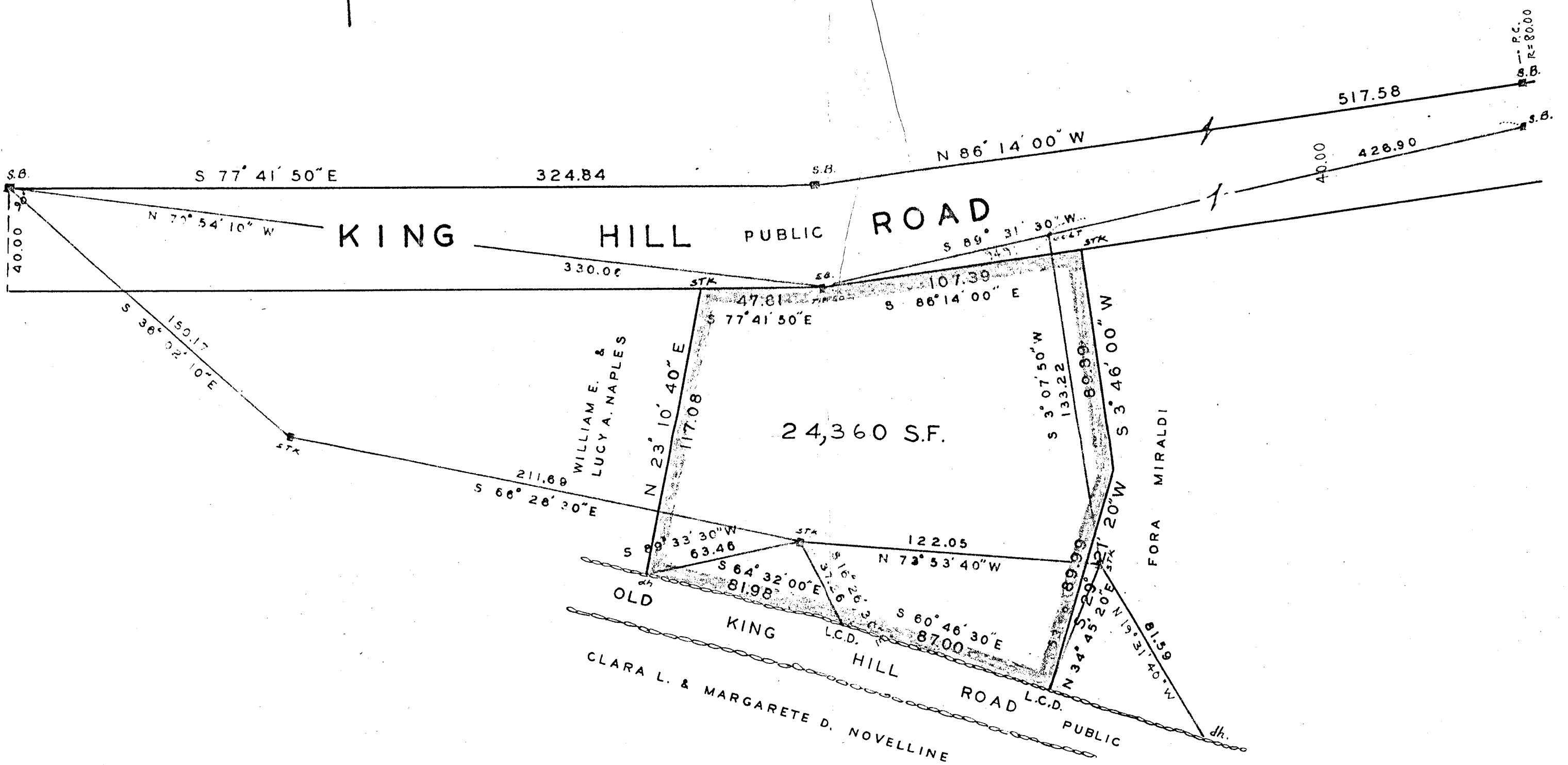
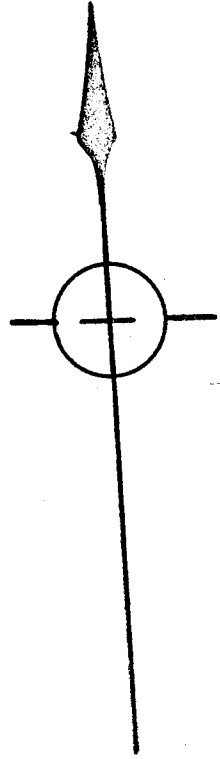


PLAN OF LAND IN  
**BRAINTREE, NORFOLK CO. MASS.**

SCALE 1" = 40'      MAY 20, 1957.

THE SCHUYLER CLAPP CO.  
 BRAINTREE, MASS.



GRANITE STREET

I CERTIFY THAT THIS ACTUAL  
 SURVEY WAS MADE ON  
 THE GROUND IN ACCORDANCE  
 WITH THE LAND COURT  
 INSTRUCTIONS OF 1950.  
 MAY 10, 1957

*Frederick T. Webb*

APPROVAL UNDER THE SUBDIVISION  
 CONTROL LAW NOT REQUIRED

June 4 1957.

*Joseph M. Magaldi*  
*Frederick T. Webb*  
*Walter J. Jennings*  
*Edward J. Rose*