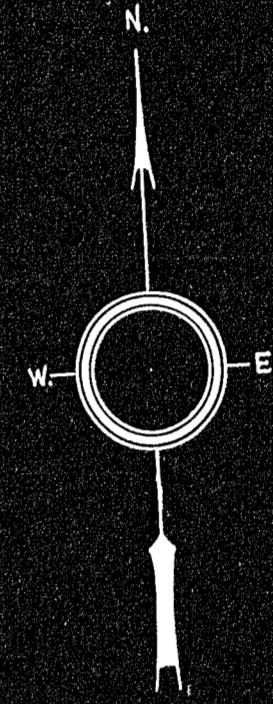
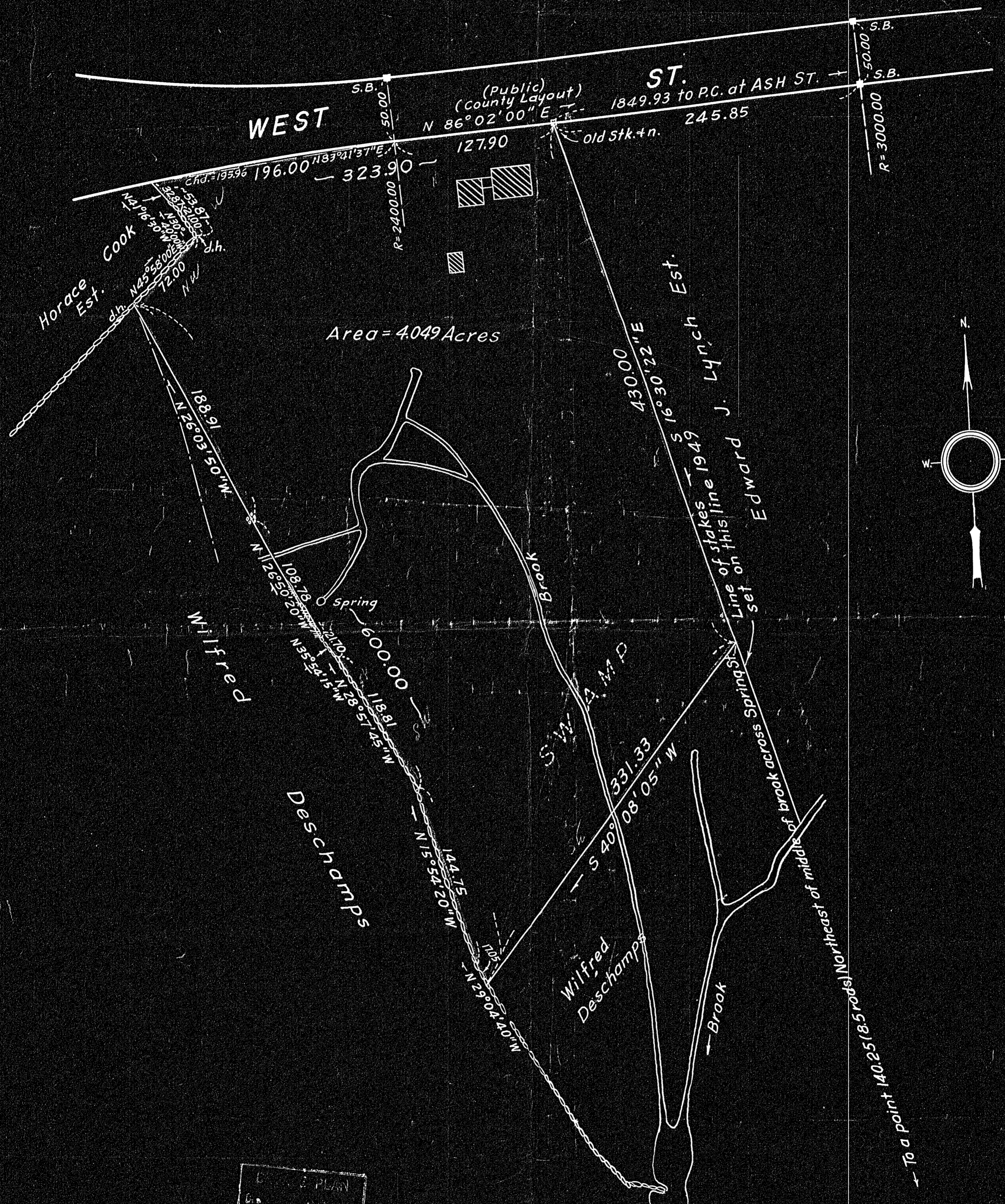


39978

PLAN OF LAND IN WRENTHAM, MASS.

Scale 60 feet to an inch. April 5, 1957

ANDERSON and HOLMAN
Civil Engineers and Surveyors



PLAN
Co.
Proposed by
Drawn by
Approved by
Approved

27658A
MAY BE FILED
 6-27-57 R.C.C.
 Date By

Zods Wrentham (Rm. 401)
 Sh. 69

Approval under the Subdivision Control Law is not required.

Town of WRENTHAM PLANNING BOARD

Robert C. Callan
James J. Mullen
John Woodhew

I certify that this actual survey was made on the ground in accordance with the Land Court instructions of 1950 between Oct. 26, 1955 and April 18, 1957.

Date: April 22, 1957. Clifton O. Holman, Jr.
 Surveyor
 59 Bradford Ave. - Westwood, Mass.

Date: 7 May 1957

27658A