

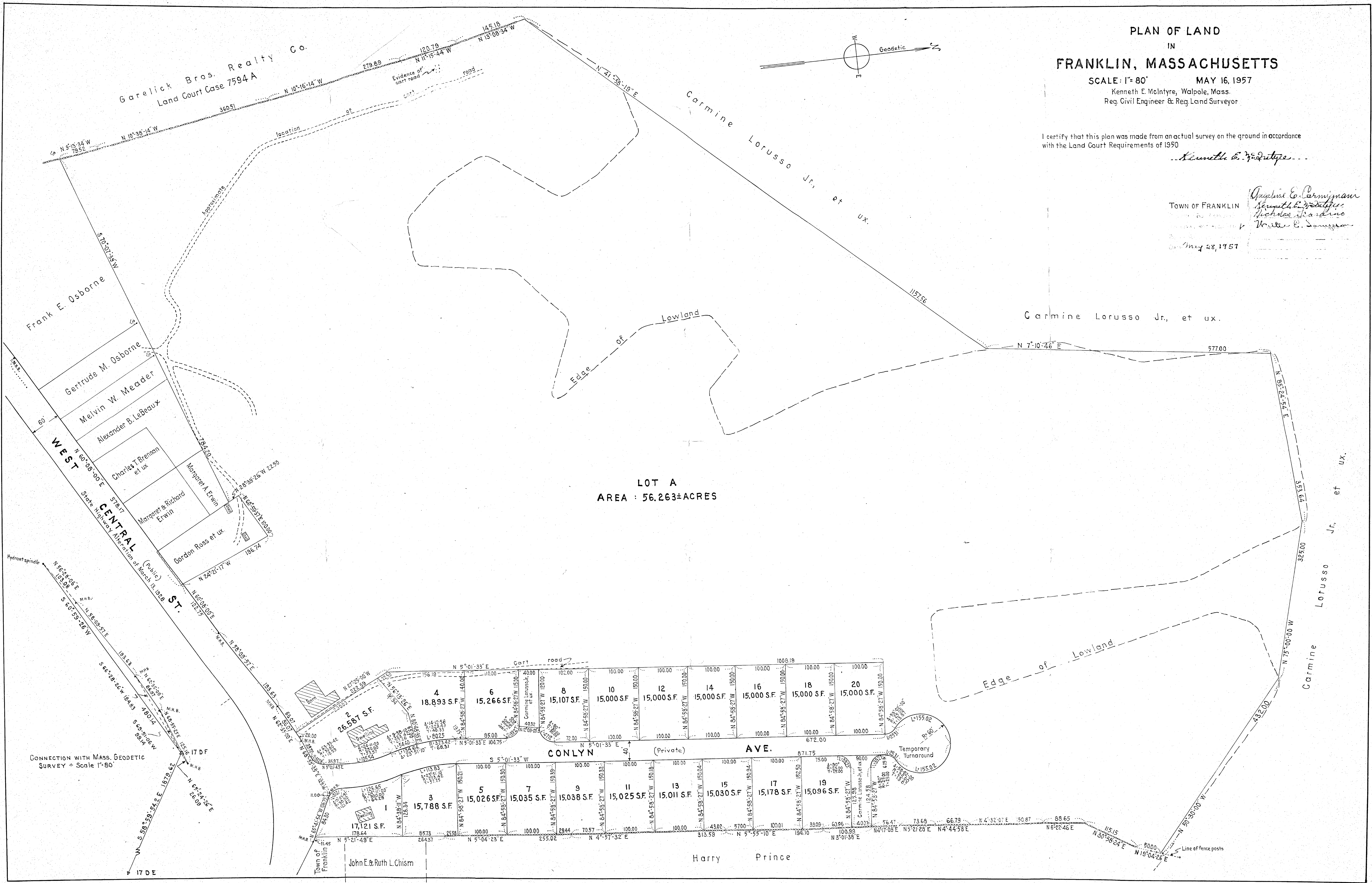
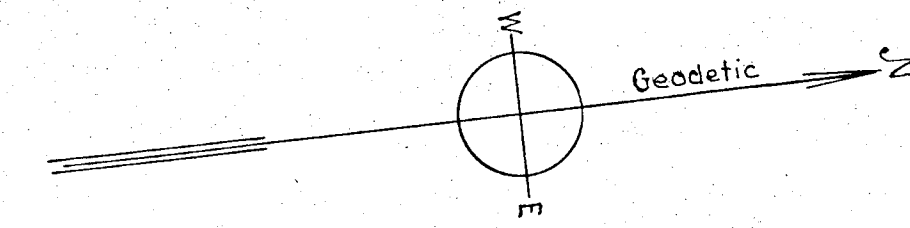
PLAN OF LAND
IN
FRANKLIN, MASSACHUSETTS

SCALE: 1"=80' MAY 16, 1957
Kenneth E. McIntyre, Walpole, Mass.
Reg. Civil Engineer & Reg. Land Surveyor

I certify that this plan was made from an actual survey on the ground in accordance with the Land Court Requirements of 1950

Kenneth E. McIntyre

TOWN OF FRANKLIN
Approved by the Town Meeting
Augustine E. Carmignani
Kenneth E. McIntyre
Nicholas J. Ardino
Walter E. Sampson
May 28, 1957



LOT A
AREA: 56.263± ACRES

CONNECTION WITH MASS. GEODETIC SURVEY - Scale 1"=80'

John E. & Ruth L. Chism

Harry Prince

Carmine Lorusso Jr. et ux.