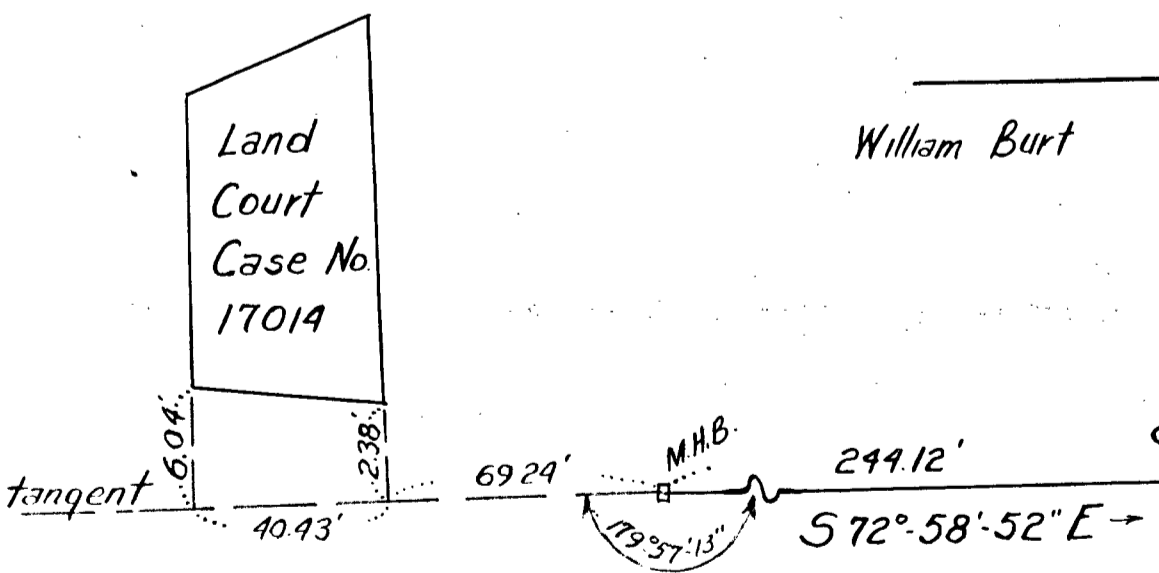


Bearings are magnetic, based on State Highway Layout of 1926. Magnetic declination, 1926 was 14° 44' West.

I certify that this actual survey was made on the ground in accordance with the Land Court Instructions of 1950 on or between December 20, 1956 and February 10, 1957.  
Date March 15, 1957 Vincent F. Lockary Engineer



Plan and dimensions to Land Court Case No. 17014 not to scale.

Plan of Land in North Weymouth, Mass. on King Cove Way

Scale 1" = 20'  
March 15, 1957

Vincent F. Lockary, C.E.  
25 Kenwood Drive  
Norwood, Massachusetts