

DETAIL SCALE: 1" = 10'

N

MANITOU RD.

30.76

end fence

36.58

28.82

39.83

ROOF OVERHANG 10'

ROOF OVERHANG 10'

37.40

13.12

POND

PLAN OF LAND IN CANTON NORFOLK COUNTY, MASS.

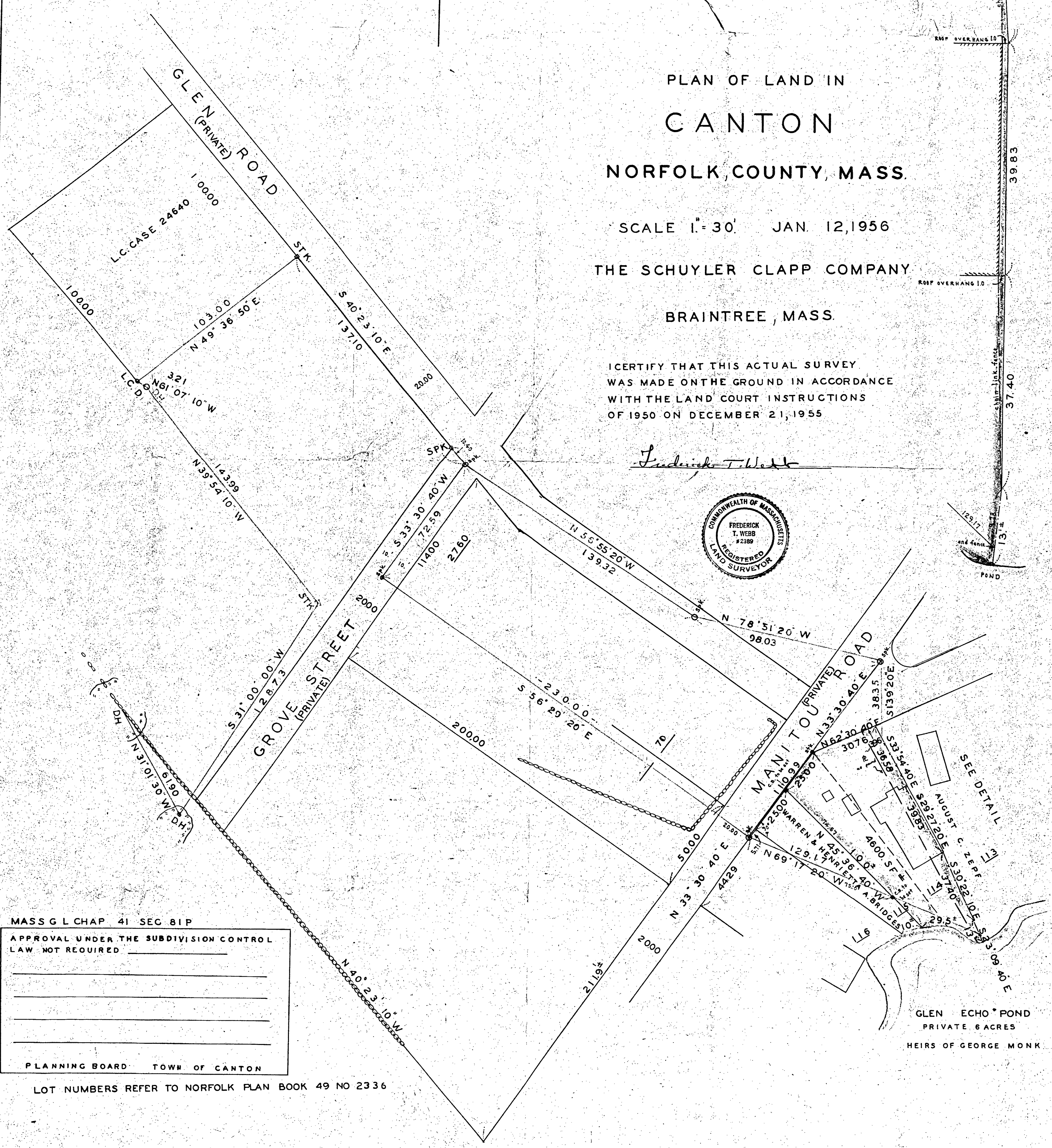
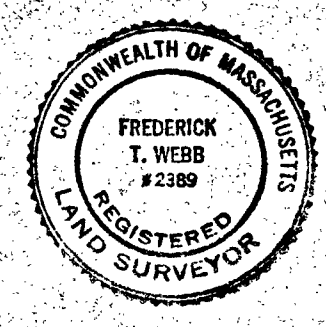
SCALE 1" = 30' JAN. 12, 1956

THE SCHUYLER CLAPP COMPANY

BRAINTREE, MASS.

I CERTIFY THAT THIS ACTUAL SURVEY
WAS MADE ON THE GROUND IN ACCORDANCE
WITH THE LAND COURT INSTRUCTIONS
OF 1950 ON DECEMBER 21, 1955

Frederick T. Webb



MASS G L CHAP 41 SEC 81P
APPROVAL UNDER THE SUBDIVISION CONTROL
LAW NOT REQUIRED

PLANNING BOARD TOWN OF CANTON

LOT NUMBERS REFER TO NORFOLK PLAN BOOK 49 NO 2336

GLEN ECHO POND
PRIVATE 6 ACRES
HEIRS OF GEORGE MONK

JN9555 RLC