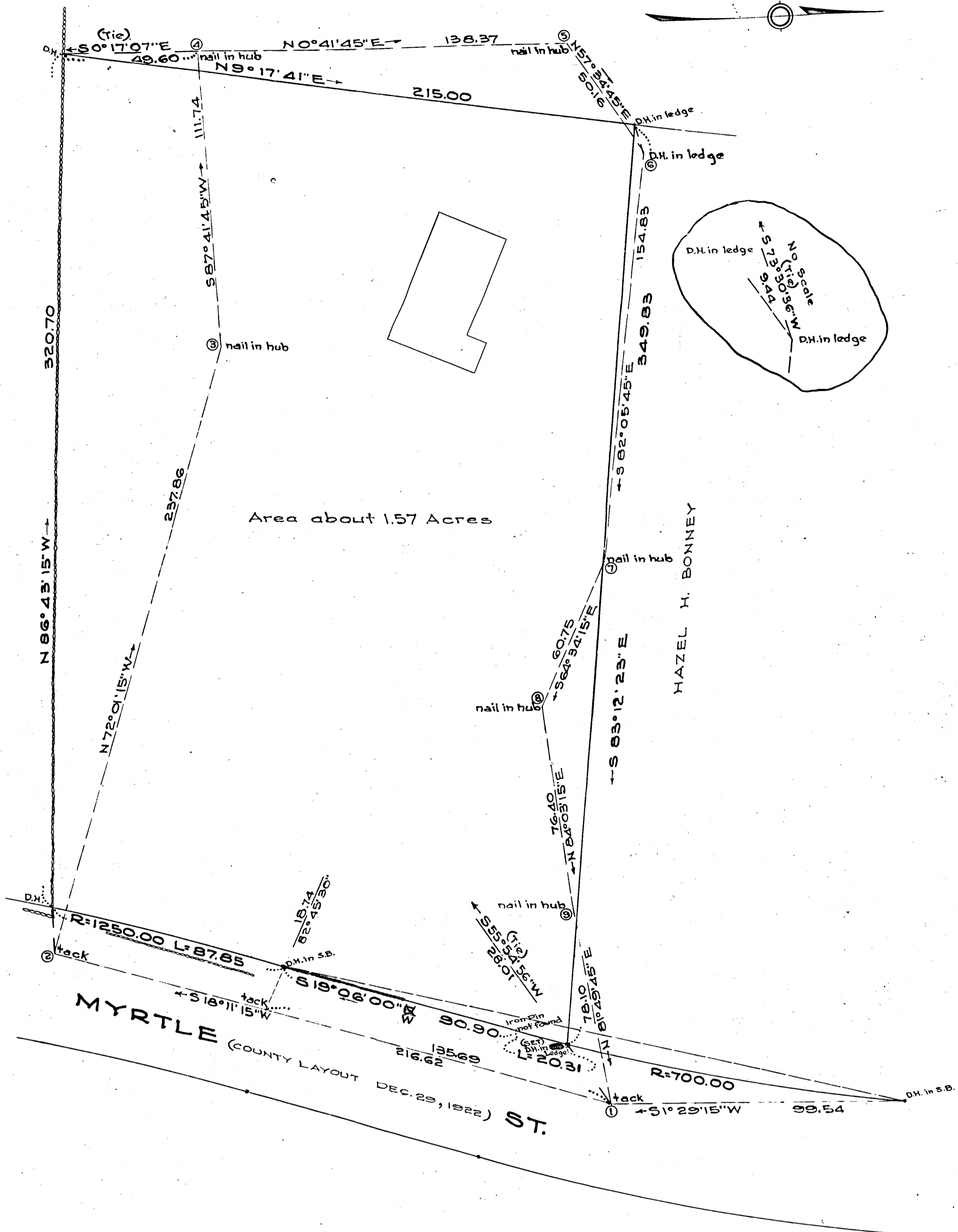
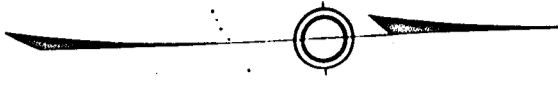


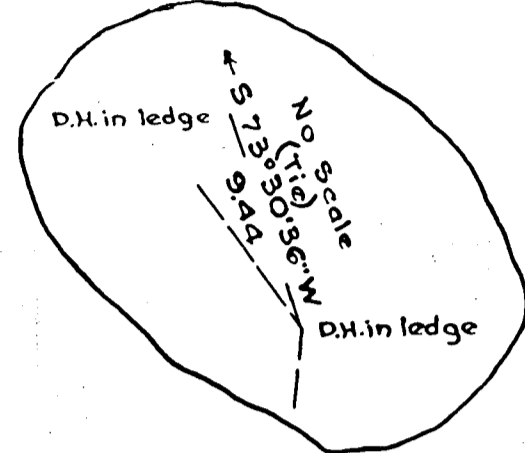
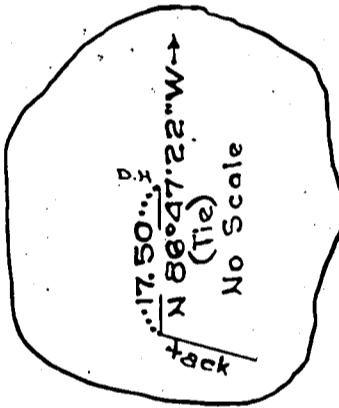
PHILIP WEITSHMUS, HENRY BARBANEL and
SAMUEL A BARBANEL



JOHN A. DUNN

HAZEL H. BONNEY

Area about 1.57 Acres



MYRTLE ST. (COUNTY LAYOUT DEC. 29, 1922)

Plan of Land in
NORFOLK
NORFOLK COUNTY
Scale: 30 feet to the inch
March 12, 1957

Edward P. Gavin Reg. Land Surveyor
344 Union St. Millis, Mass.

I certify that this actual survey was made on the ground in accordance with the Land Court Instructions of 1950 between March 4, 1957 and March 7, 1957.

Edward P. Gavin

Approval under the Sub Division Control Law not required:

Norfolk Planning Bd.

