

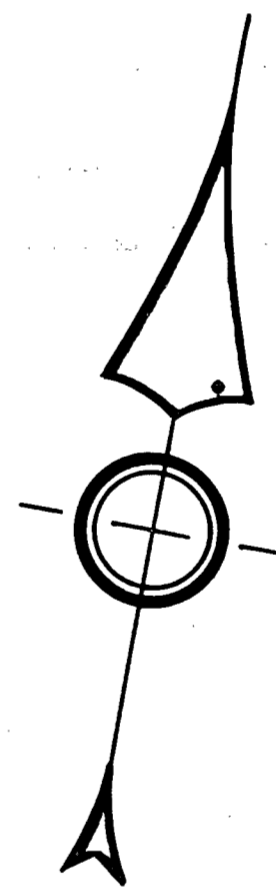
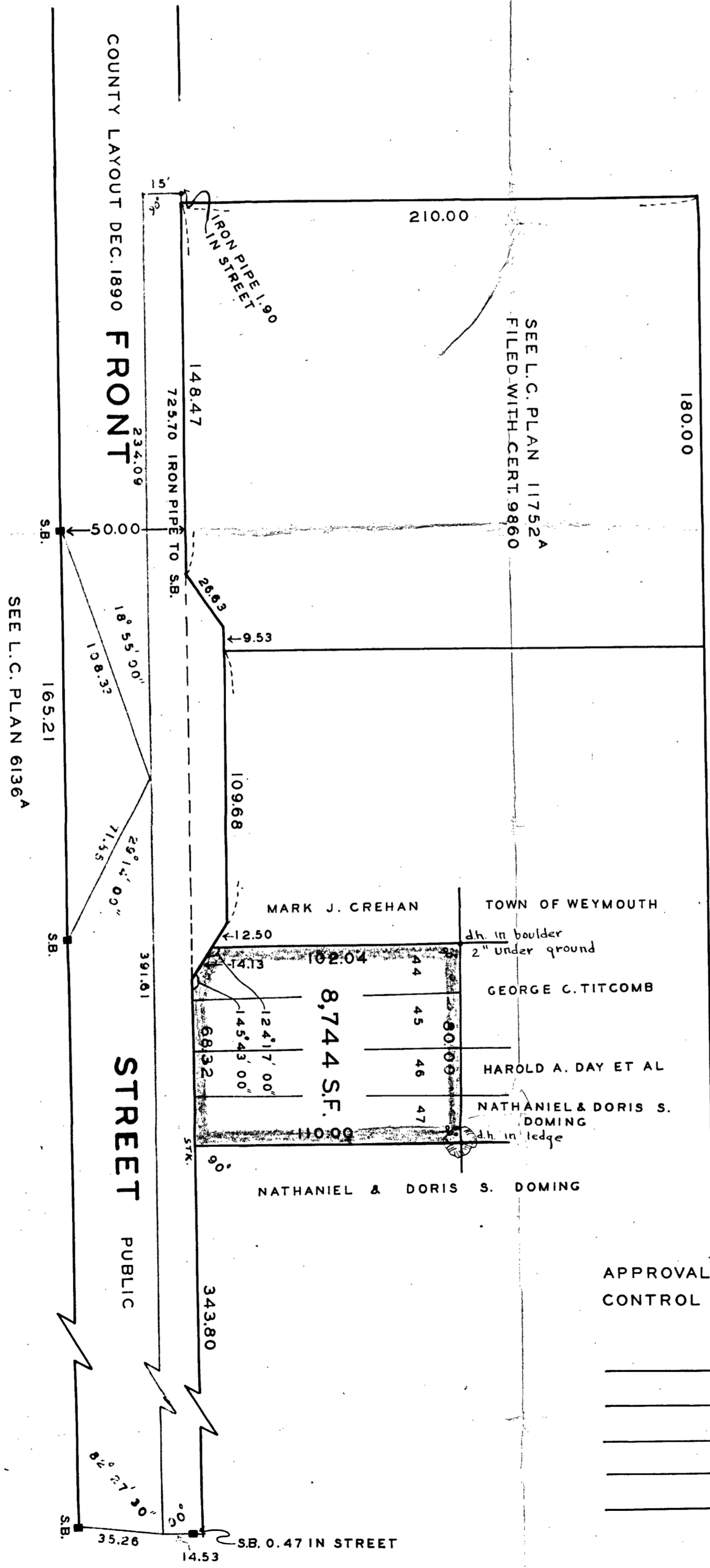
PLAN OF LAND IN
WEYMOUTH NORFOLK CO. MASS.

SCALE 1" = 40' — MARCH 25, 1957

THE SCHUYLER CLAPP CO.
BRAINTREE, MASS.



Handwritten: 4/1/57
Handwritten: [Signature]



I CERTIFY THAT THIS PLAN
WAS MADE IN ACCORDANCE
WITH THE LAND COURT
INSTRUCTIONS OF 1950, ON
FEBRUARY 21, 1957
Frederick T. Webb
CLASS "B" SURVEY

APPROVAL UNDER THE SUBDIVISION
CONTROL LAW NOT REQUIRED.

_____, 19 ____

