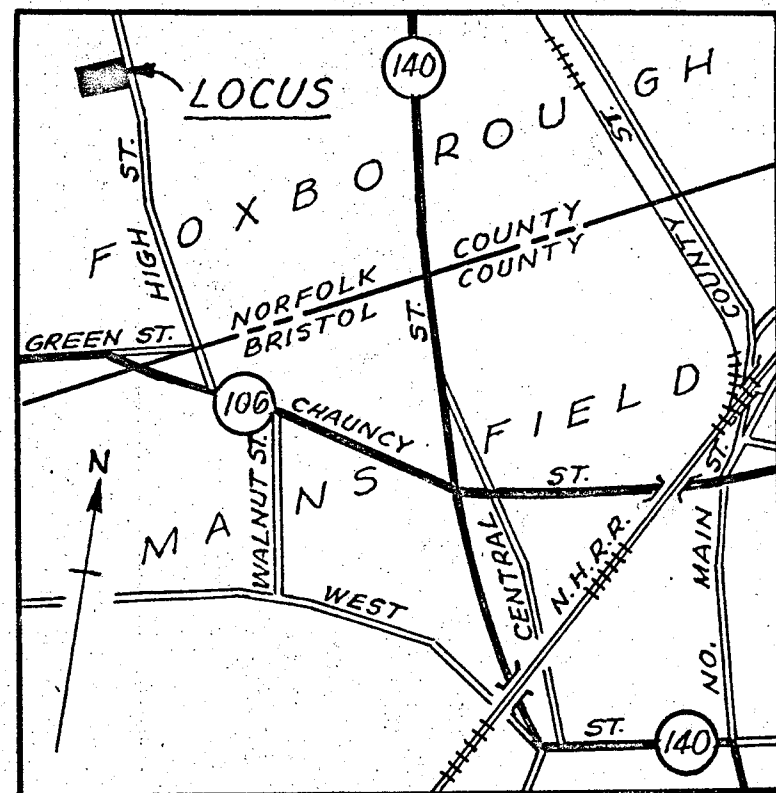
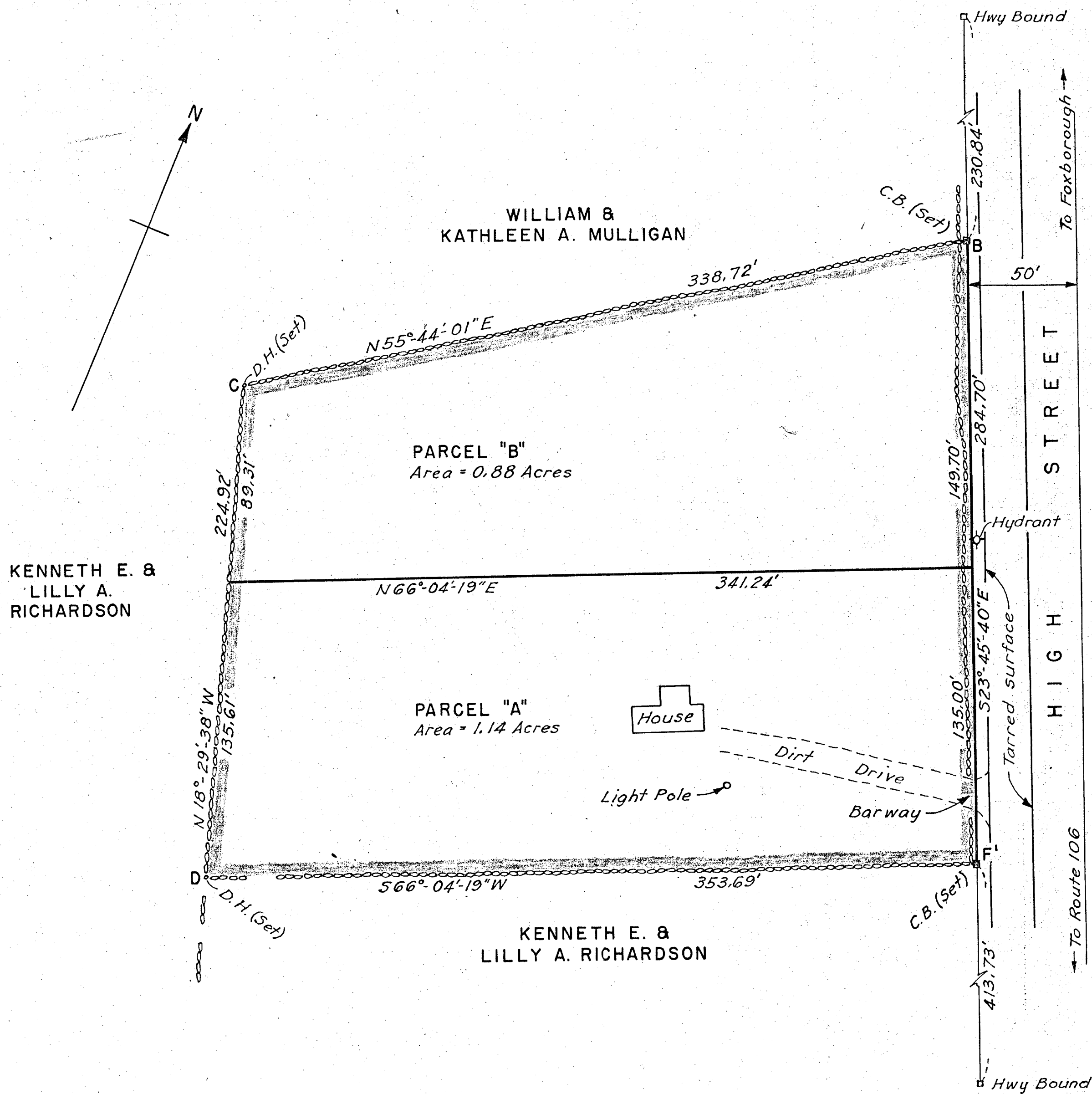


CLOSURE ON PROPERTY LINES							
STA.	BEARING	INTERIOR ANGLE	DISTANCE	LATITUDE		DEPARTURE	
				NORTH	SOUTH	EAST	WEST
B		79°-29'-41"					
	S23°-45'-40"E		284.70		260.57	114.71	
F'		90°-10'-01"					
	S66°-04'-19"W		353.69		143.45		323.29
D		84°-33'-57"					
	N18°-29'-38"W		224.92	213.31			71.35
C		105°-46'-21"					
	N55°-44'-01"E		338.72	190.71		279.93	
B							
			1202.03	404.02	404.02	394.64	394.64



LOCATION MAP
NOT TO SCALE



PLANNING BOARD
TOWN OF FOXBOROUGH, MASS.
APPROVAL NOT REQUIRED —

Claude D. Young
John S. Fenech
David K. Bragg

DATE Feb. 26, 1957

I certify that this actual survey was made on the ground in accordance with the Land Court Instructions of 1950.

DATE February 26, 1957 *F. E. Tibbetts, Jr.*
F. E. TIBBETTS, JR.
R.P.E. 4610

PLAN OF LAND IN
FOXBOROUGH, MASS.

SURVEYED FOR
WILMER T. DAVIES

JANUARY 19, 1957

SCALE: 1 INCH = 40 FEET

S. CORSE F. E. TIBBETTS, JR.
SURVEYOR ENGINEER
ROCHESTER, MASS.

413.73 Cr.
284.70 Cr.
229.84 Cr.
927.27 Cr.
Total 1695.54 Cr.
Total 1695.54 Cr.