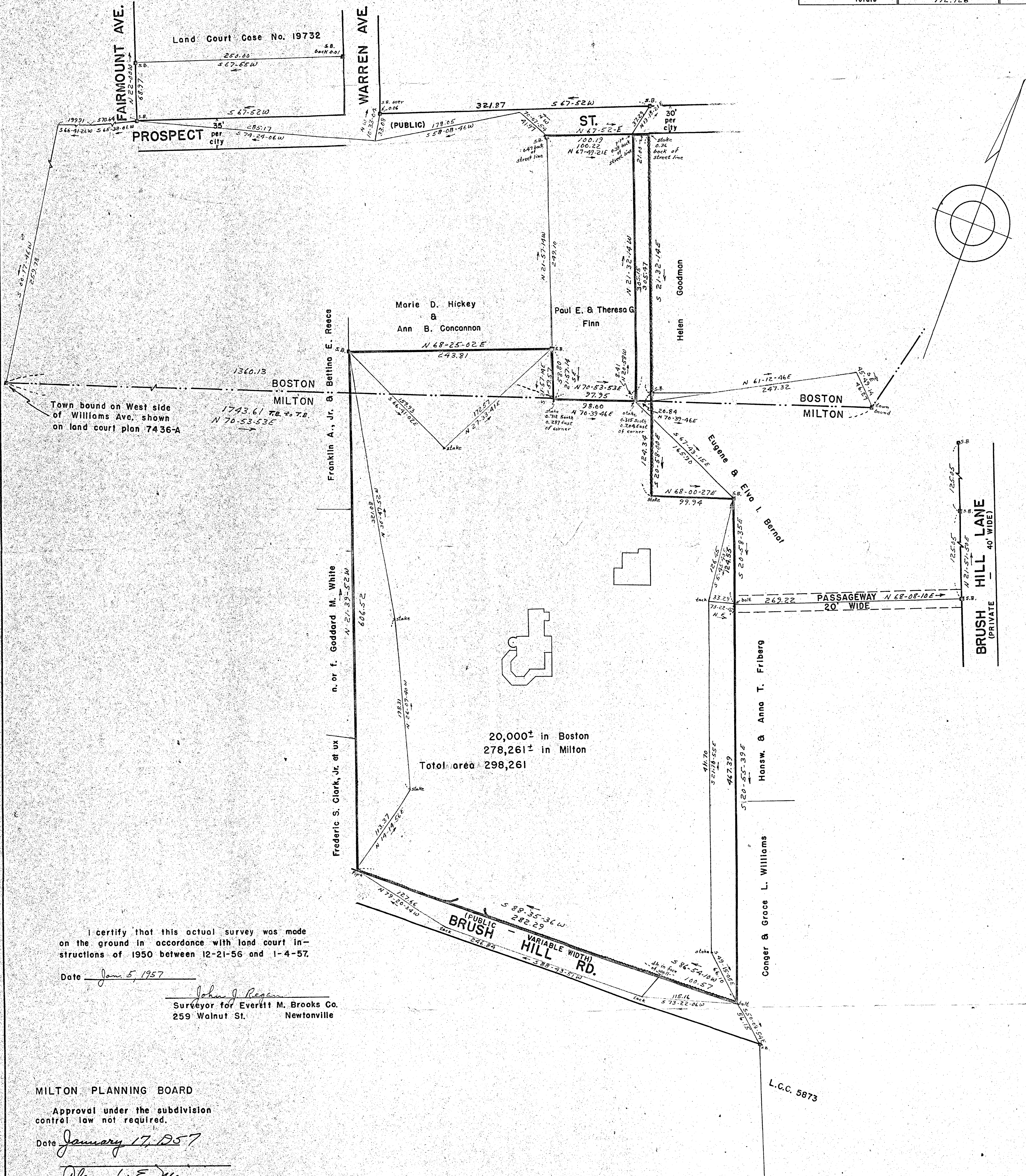


TRAVERSE

Bearing	Dist	N	S	E	W
N 14-14-56 E	112.37	109.883		27.904	
N 26-09-40 W	198.31	177.999			87.436
N 30-47-52 W	321.08	275.799			164.295
S 66-41-02 E	159.93		63.301	146.869	
N 27-33-41 E	172.57	152.986		79.848	
S 21-57-14 E	59.57		55.250	22.271	
N 70-39-46 E	98.00	32.450		92.471	
S 67-43-15 E	165.90		62.896	153.516	
S 5-45-40 E	126.45		125.816	12.694	
S 21-10-55 E	411.70		383.887	148.760	
S 49-15-65 E	66.10		43.148	50.078	
S 73-22-06 W	115.16		32.961		110.342
S 88-43-51 W	246.84		5.467		246.777
N 77-20-34 W	127.66	23.669			125.459
Totals:		772.726		734.411	



I certify that this actual survey was made on the ground in accordance with land court instructions of 1950 between 12-21-56 and 1-4-57.
 Date Jan. 5, 1957
John J. Reegan
 Surveyor for Everett M. Brooks Co.
 259 Walnut St. Newtonville

MILTON PLANNING BOARD
 Approval under the subdivision control law not required.
 Date January 17, 1957
Alexander E. Manning
 For the Milton Planning Board

PLAN OF LAND
 IN
 MILTON & BOSTON - MASS.

SCALE 1 IN = 60 FT JAN. 5, 1957
 EVERETT M. BROOKS CO. CIVIL ENGRS
 NEWTONVILLE MASS.