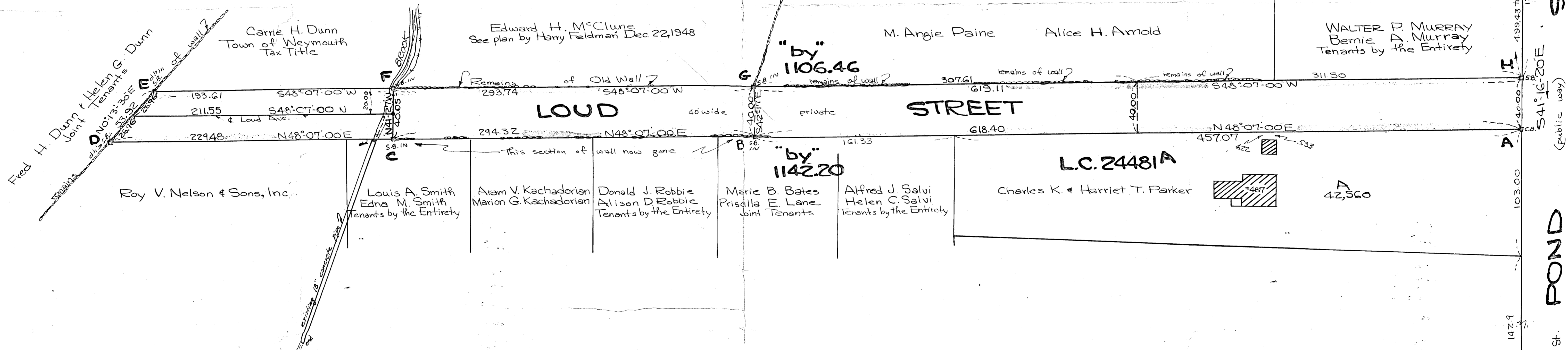
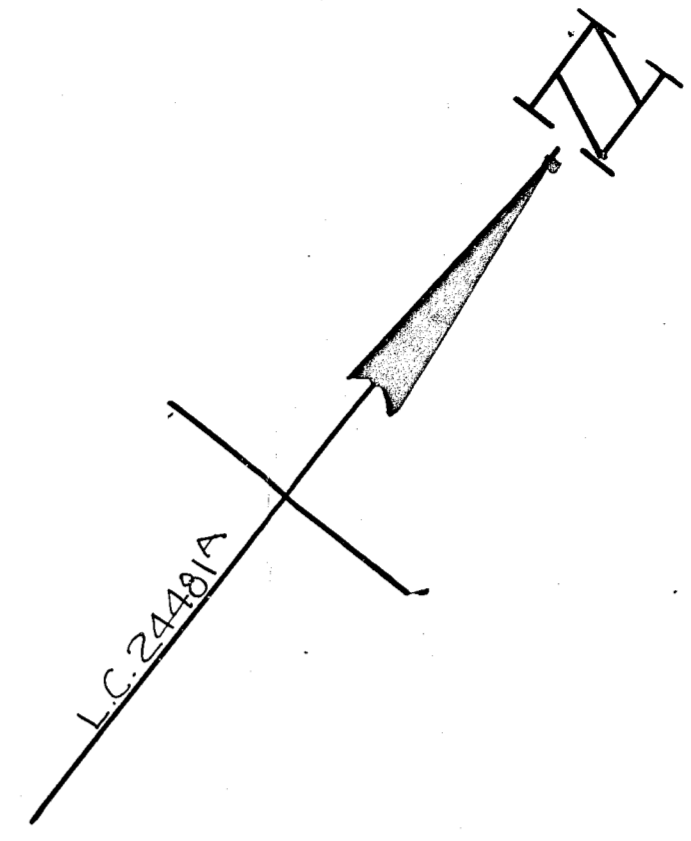
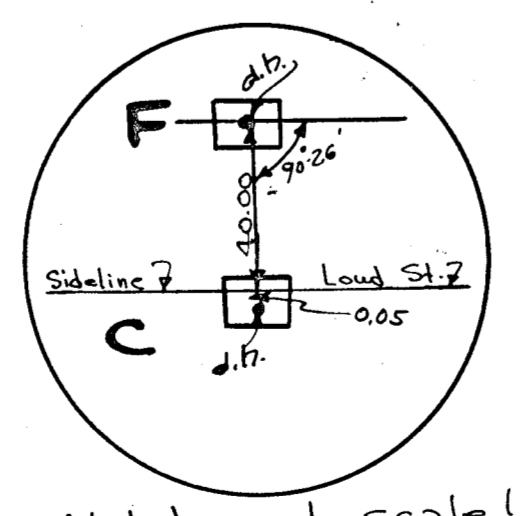


Plan showing layout of **LOUD ST.**  
**SOUTH WEYMOUTH, MASS..**  
 Scale 1"=40' November 5, 1956  
 L.W. DeGelle Surveyors, Inc. Civil Engineers  
 285 Union Street, Randolph



Planning Board approval not required  
 under the Subdivision Control Law.  
 Weymouth Planning Board Sec. \_\_\_\_\_ Date \_\_\_\_\_



Not drawn to scale!

I certify that this actual survey was  
 made on the ground on October 30, 1956  
 in accordance with the Land Court  
 Instructions of 1950.  
 Laurence W. DeGelle, Nov. 5, 1956  
 Surveyor

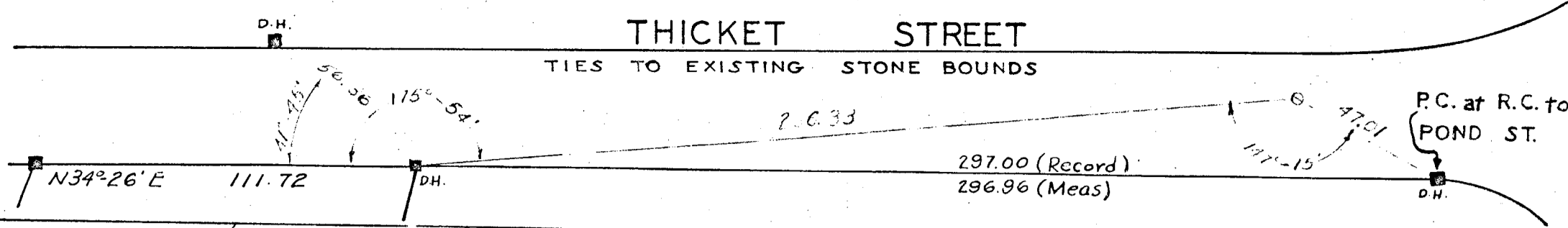
LOUD STREET TRAVERSE

STA.	BEARING	DIST.	N <sup>+</sup>	S <sup>-</sup>	E <sup>+</sup>	W <sup>-</sup>
A-D	S48°07'00"W	1142.20	—	762.55	—	850.37
D-E	N0°13'30"E	53.92	53.92	—	0.21	—
E-H	N48°07'00"E	1106.46	738.61	—	823.77	—
H-A	S41°16'20"E	40.00	—	30.06	26.39	—
Totals			792.61	792.61	850.37	850.37

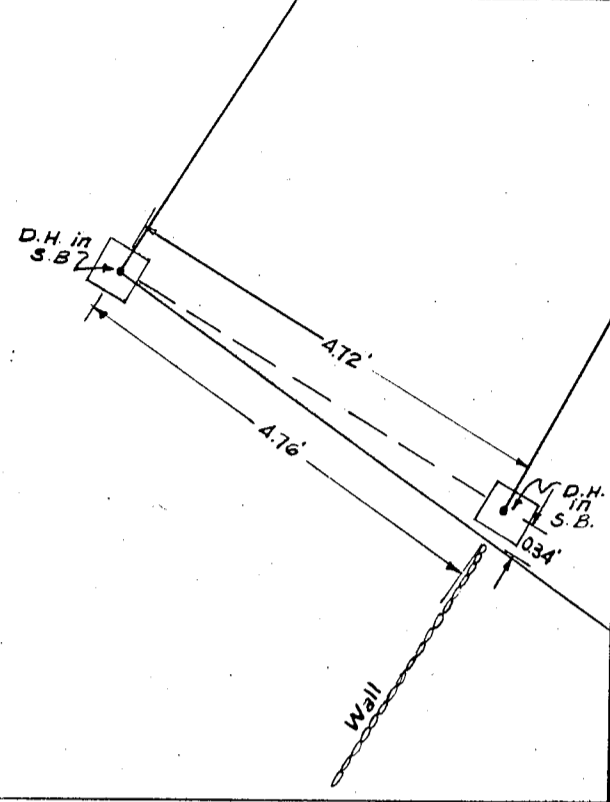
To Tricket St →  
 To Main St →  
 POND  
 STREET  
 (public way)

THICKET STREET

TIES TO EXISTING STONE BOUNDS



DETAIL Scale: 1 in = 40 ft.



DETAIL OF BOUNDS Scale: 1 in = 2 ft.

Scale: 1 in = 2 ft.

Heirs of SUSAN T. DOWSE

206,074 SQ. FT.

TOT. AREA = 5.07± ACRES

THICKET (public) ST. SEE DETAIL FOR TIES TO STONE BOUNDS

ROBERT J. & MARY E. GALLAGHER

5067 A SQ. FT. 9912 B SQ. FT.

Old Conc Floor & Fdn.

LAND COURT No. 12371A

DANIEL J. LANE and JOSEPH A. LANE, J. TEN.

JOHN E & MARION W. LANEAU

ANGALINE N. PAINE et al

PLAN OF LAND EDWARD H. McCLUNE PROPERTY THICKET STREET WEYMOUTH MASS.

I certify that this actual survey was made on the ground in accordance with Land Court Instructions of 1950 between Sept. 1948 and Feb 1957. February 20, 1957 Harry R. Feldman Civil Engineer

SCALE: 1 INCH = 40 FEET JANUARY 22, 1957 HARRY R. FELDMAN - ENGINEER BOSTON, MASS.