

WEBSTER ST.

MARK LEE RD. Public

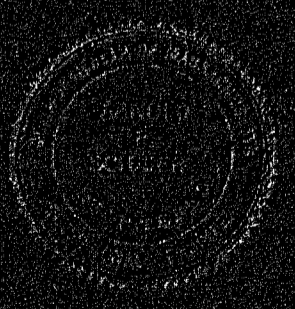
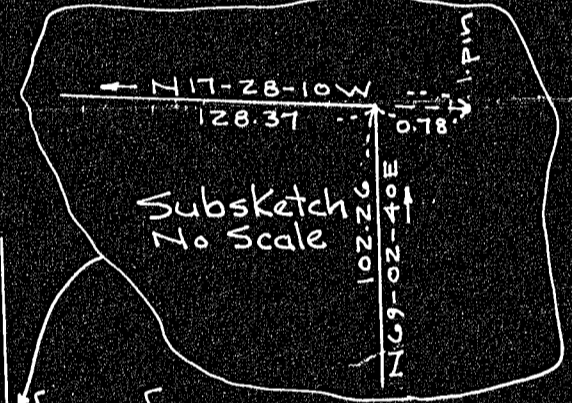
ROAD

ALFRETON Public

HUNNEWELL ST. Public

Planning Board of the Town of Needham

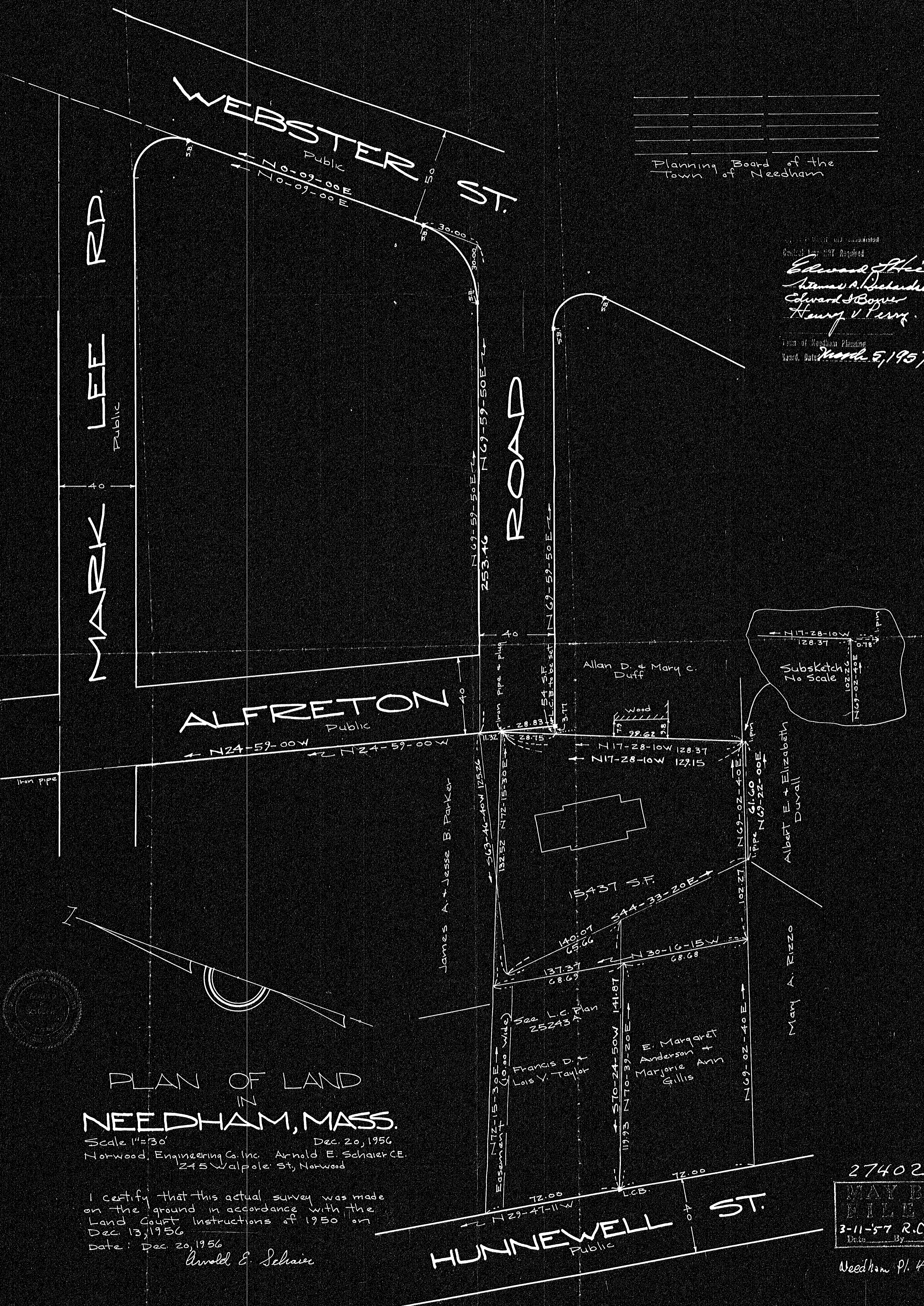
Edward J. Heie  
Thomas A. Richardson  
Edward J. Boyer  
Henry V. Perry  
March 5, 1957



PLAN OF LAND IN NEEDHAM, MASS.

Scale 1"=30' Dec. 20, 1956  
Norwood Engineering Co. Inc. Arnold E. Schaefer C.E.  
245 Walpole St., Norwood

I certify that this actual survey was made on the ground in accordance with the Land Court Instructions of 1950 on Dec. 13, 1956  
Date: Dec. 20, 1956  
Arnold E. Schaefer



27402  
MAY BE FILED  
3-11-57 R.C.C.  
Date By

Needham Pl. 4