

Sh. 179 Cas. Plans

Coloquero & Adelinis Salvaggio

CHESTER AVENUE (PRIVATE)

428
Gabriel & Maria R. Melito
429
430
431
432

RIDGEWAY

STREET (PRIVATE)

STREET (PRIVATE)

STREET (PRIVATE)

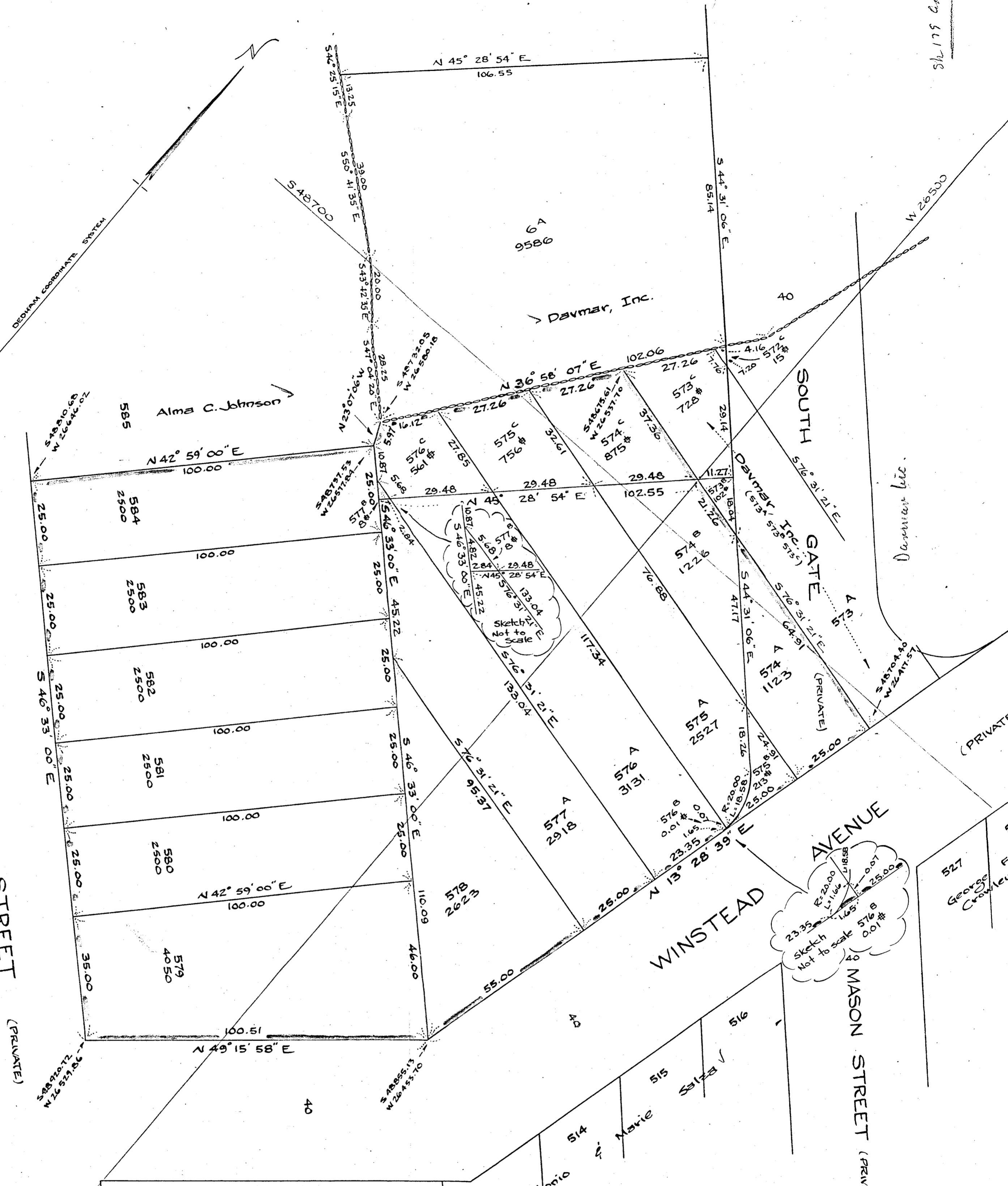
STREET (PRIVATE)

STREET (PRIVATE)

STREET (PRIVATE)

STREET (PRIVATE)

STREET (PRIVATE)



PLAN of LAND IN DEDHAM, MASS.

Scale: 1 inch = 20 feet Pilling Engineering Co. Inc. 26 Norfolk St. Dedham, Mass. January 21, 1957

Approval under Subdivision Control Law not required DEDHAM PLANNING BOARD

Note: See plan by E.W. Pilling, Engineer dated December 20, 1954

Lots 6^A, 577^B, 576^C, 575^C, 574^C, 573^C, and 572^C are lot 6 on above mentioned plan (see note)
Lots 578, 577^A, 576^A, 576^B, 575^A, 574^B, and 573^B are lot 7 on above mentioned plan (see note)

I certify that this actual survey was made on the ground in accordance with Land Court Instructions of 1950 on or between January 14, 1957 and January 19, 1957
Howard L. Melcher Civil Engineer