

PLAN OF LAND IN  
WEYMOUTH, NORFOLK COUNTY, MASS.

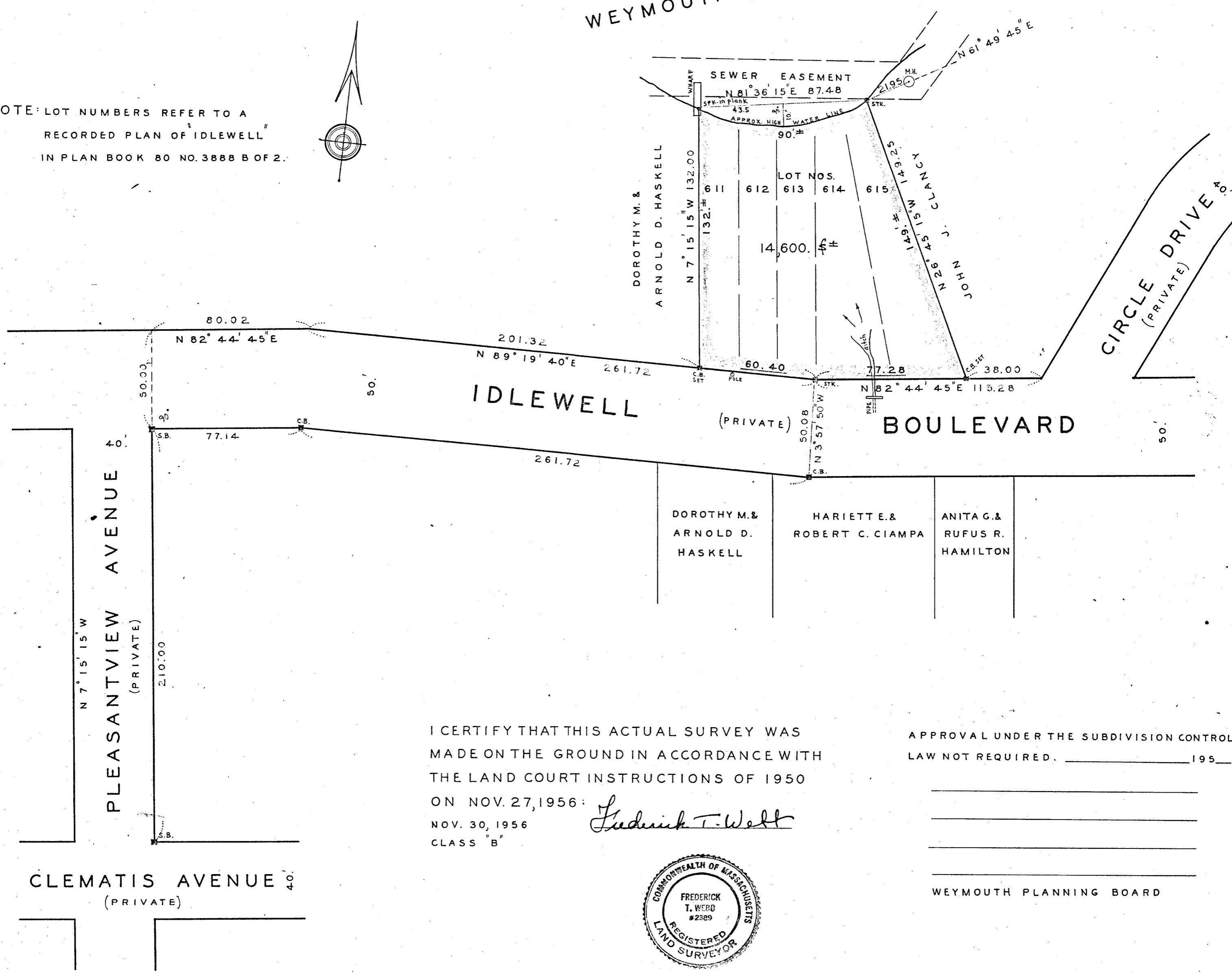
SCALE: 1"=40' NOV. 30, 1956

THE SCHUYLER CLAPP COMPANY  
BRAintree, MASS.

NOTE: LOT NUMBERS REFER TO A  
RECORDED PLAN OF IDLEWELL  
IN PLAN BOOK 80 NO. 3888 B OF 2.



WEYMOUTH FORE RIVER



I CERTIFY THAT THIS ACTUAL SURVEY WAS  
MADE ON THE GROUND IN ACCORDANCE WITH  
THE LAND COURT INSTRUCTIONS OF 1950  
ON NOV. 27, 1956:  
NOV. 30, 1956  
CLASS "B"

*Frederick T. Webb*

APPROVAL UNDER THE SUBDIVISION CONTROL  
LAW NOT REQUIRED. \_\_\_\_\_ 195\_\_

WEYMOUTH PLANNING BOARD

