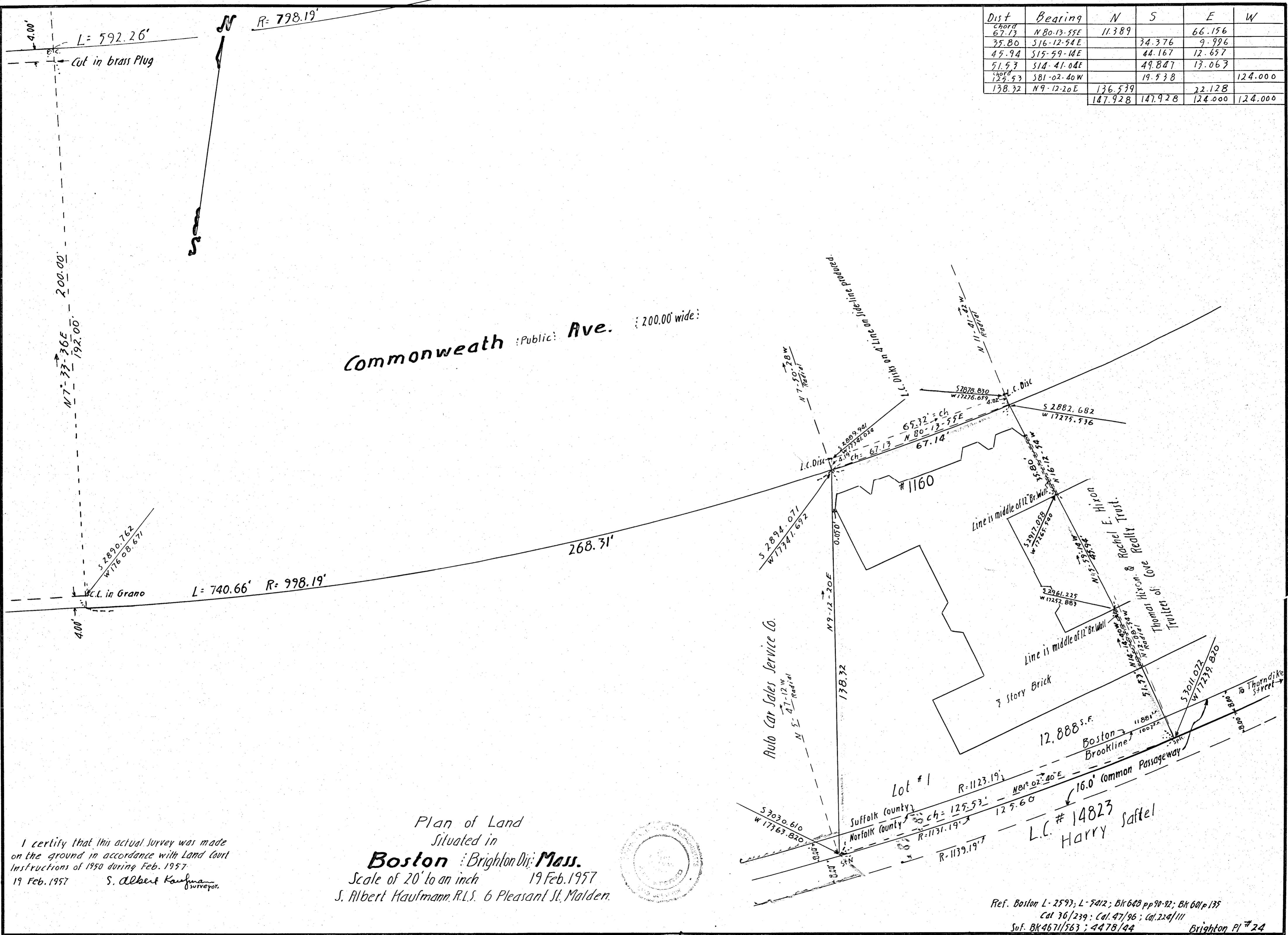


Dist	Bearing	N	S	E	W
Chord 67.13	N 80-13-55E	11.389		66.156	
35.80	S 16-12-54E		74.376	9.996	
45.94	S 15-59-14E		44.167	12.657	
51.53	S 14-41-04E		49.847	17.063	
Chord 129.53	S 81-02-40W		19.538		124.000
138.32	N 9-12-20E	136.539		22.128	
		147.928	147.928	124.000	124.000



Commonwealth :Public: Ave. : 200.00' wide:

L = 740.66' R = 998.19'

268.31'

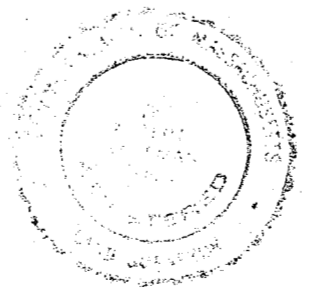
Lot # 1

12,888 s.f.

L.C. # 14823 Harry Saffel

I certify that this actual survey was made on the ground in accordance with Land Court Instructions of 1950 during Feb. 1957
 19 Feb. 1957 S. Albert Kaufmann
 Surveyor

Plan of Land Situated in
Boston :Brighton Dis: Mass.
 Scale of 20' to an inch 19 Feb. 1957
 S. Albert Kaufmann, R.L.S. 6 Pleasant St. Malden.



Ref. Boston L-2597; L-7412; BK 649 pp 90-92; BK 601 p 135
 Cal 36/239; Cal. 47/96; Cal. 224/111
 Sof. BK 4671/563; 4478/44 Brighton Pl # 24