

Plan of Land in
WESTWOOD, MASS.

Scale: 1 inch = 40 feet Pilling Engineering Co., Inc.
26 Norfolk St., Dedham, Mass.

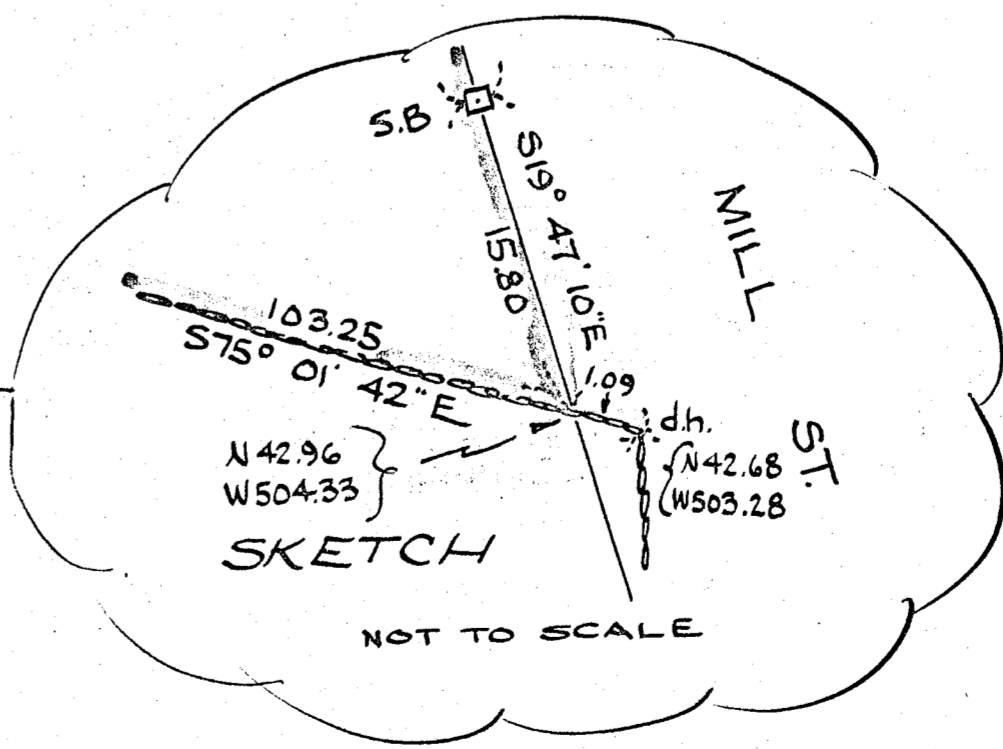
October 30, 1956

NOTE:
Coordinates are assumed coordinates - Same Basis as
those used on L.C. Plan 14831.

Approval under Subdivision Control Act not
required.

WESTWOOD PLANNING BOARD

Myron C. Hamer November 16, 1956



I hereby certify that this plan was made in
accordance with Land Court instructions of 1950 from
an actual survey made on the ground between Oct. 22-27, 1956

Howard L. Millard
Civil Engineer