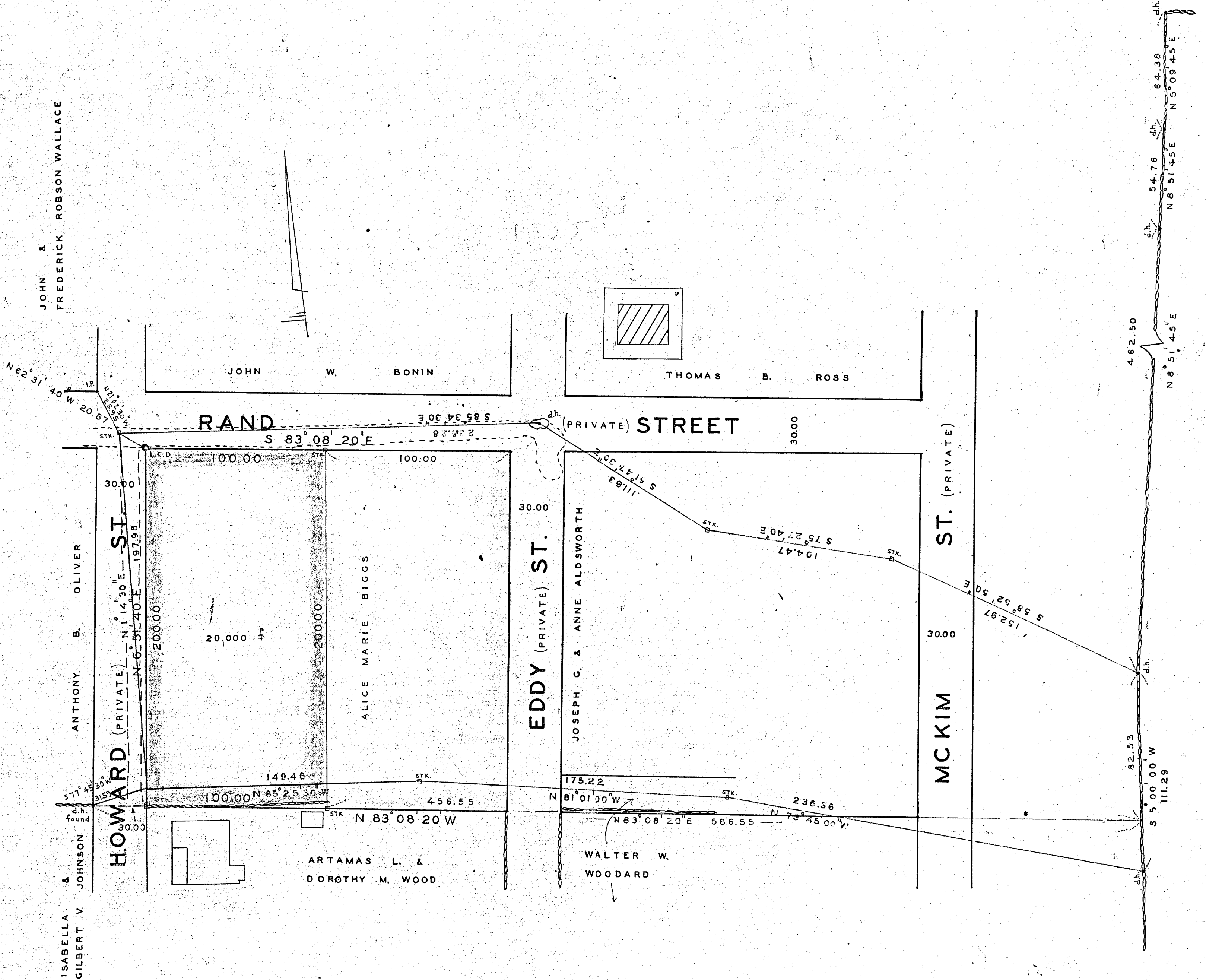


PLAN OF LAND IN
 RANDOLPH, NORFOLK COUNTY, MASS.

SCALE: 1" = 40' JAN. 14, 1957

THE SCHUYLER CLAPP COMPANY
 BRAINTREE, MASS.



APPROVAL UNDER THE SUBDIVISION
 CONTROL LAW NOT REQUIRED:

Gene B. P. 1957
Leo P. Wall
Edward L. Wang
Lawrence W. DeLott

PLANNING BOARD: TOWN OF RANDOLPH

I CERTIFY THAT THIS ACTUAL SURVEY WAS MADE ON
 THE GROUND IN ACCORDANCE WITH THE LAND COURT
 INSTRUCTIONS OF 1950 DURING DEC. 1956.

JAN. 14, 1957 Frederick T. Webb
 CLASS 'B'

