

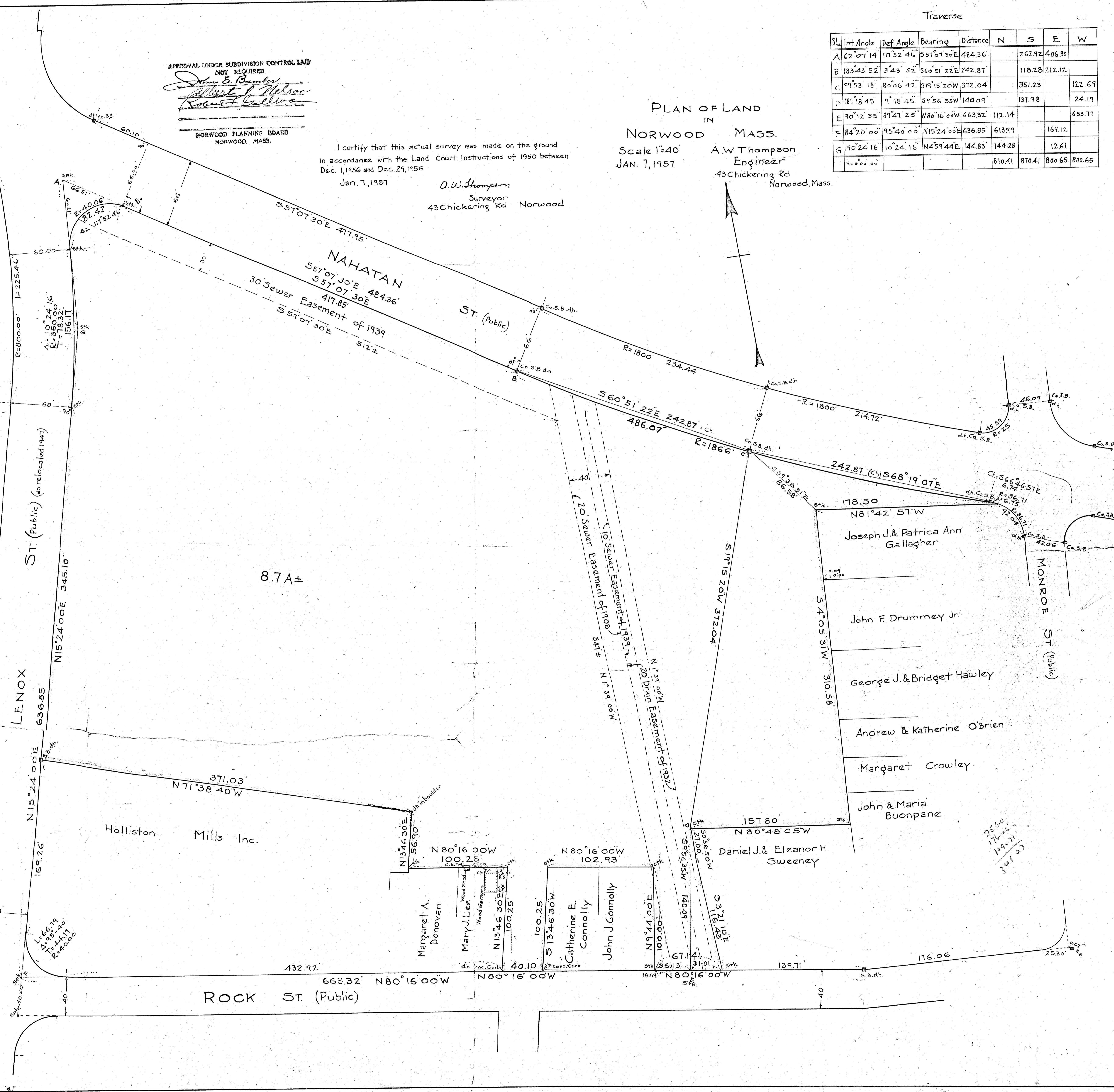
APPROVAL UNDER SUBDIVISION CONTROL LAWS
NOT REQUIRED
John E. Bamber
Robert P. Wilson
Robert Gallivan
NORWOOD PLANNING BOARD
NORWOOD, MASS.

I certify that this actual survey was made on the ground
in accordance with the Land Court Instructions of 1950 between
Dec. 1, 1956 and Dec. 29, 1956
Jan. 7, 1957
A.W. Thompson
Surveyor
43 Chickering Rd
Norwood

PLAN OF LAND
IN
NORWOOD MASS.
Scale 1"=40'
JAN. 7, 1957
A.W. Thompson
Engineer
43 Chickering Rd
Norwood, Mass.

Traverse								
Sta.	Int. Angle	Def. Angle	Bearing	Distance	N	S	E	W
A	62°07'14"	111°52'46"	S51°07'30"E	484.36'		262.92	406.80	
B	183°43'52"	3°43'52"	S60°51'22"E	242.87'		118.28	212.12	
C	99°53'18"	80°06'42"	S19°15'20"W	372.04'		351.23		122.69
D	189°18'45"	9°18'45"	S9°56'35"W	140.09'		137.98		24.19
E	90°12'35"	89°41'25"	N80°16'00"W	663.32'	112.14			653.77
F	84°20'00"	95°40'00"	N15°24'00"E	636.85'	613.99		169.12	
G	190°24'16"	10°24'16"	N45°59'44"E	144.83'	144.28		12.61	
	90°00'00"				810.41	810.41	800.65	800.65

Note: S.B.s to be set by Town of Norwood
on LENOX ST. and on curves at Rock St. & Nahatan St.



25.50
172.06
119.71
347.07