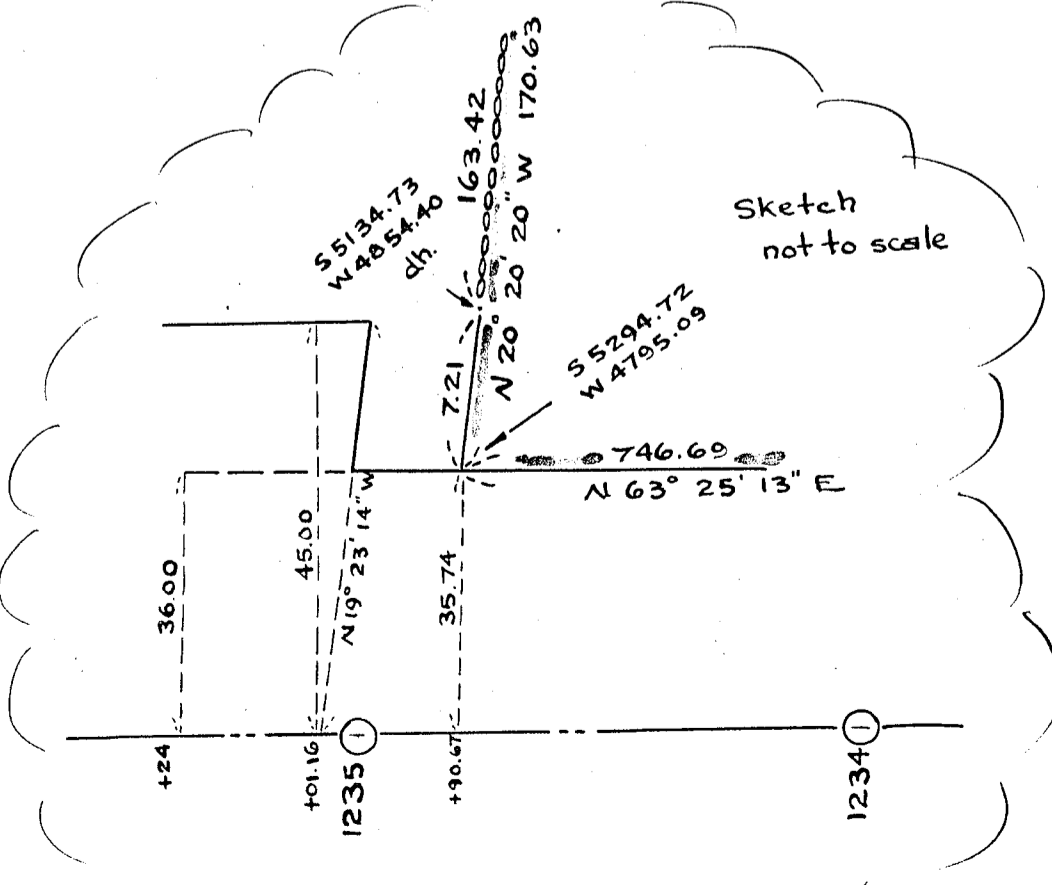


Approval under Subdivision Control Law not required
 NORFOLK PLANNING BOARD

162,440 sq. ft.
 or
 3.73 Acres

Note:
 RR formerly New York & New England Railroad



I certify that this plan was made according to Land Court Instructions of 1950 from an actual survey made on the ground from October 13 - December 24, 1956.

Howard L. Millard
 Civil Engineer

Plan of Land in
NORFOLK. MASS.

Scale: 1 inch = 40 feet Pilling Engineering Co., Inc.
 26 Norfolk St., Dedham, Mass.

January 11, 1957