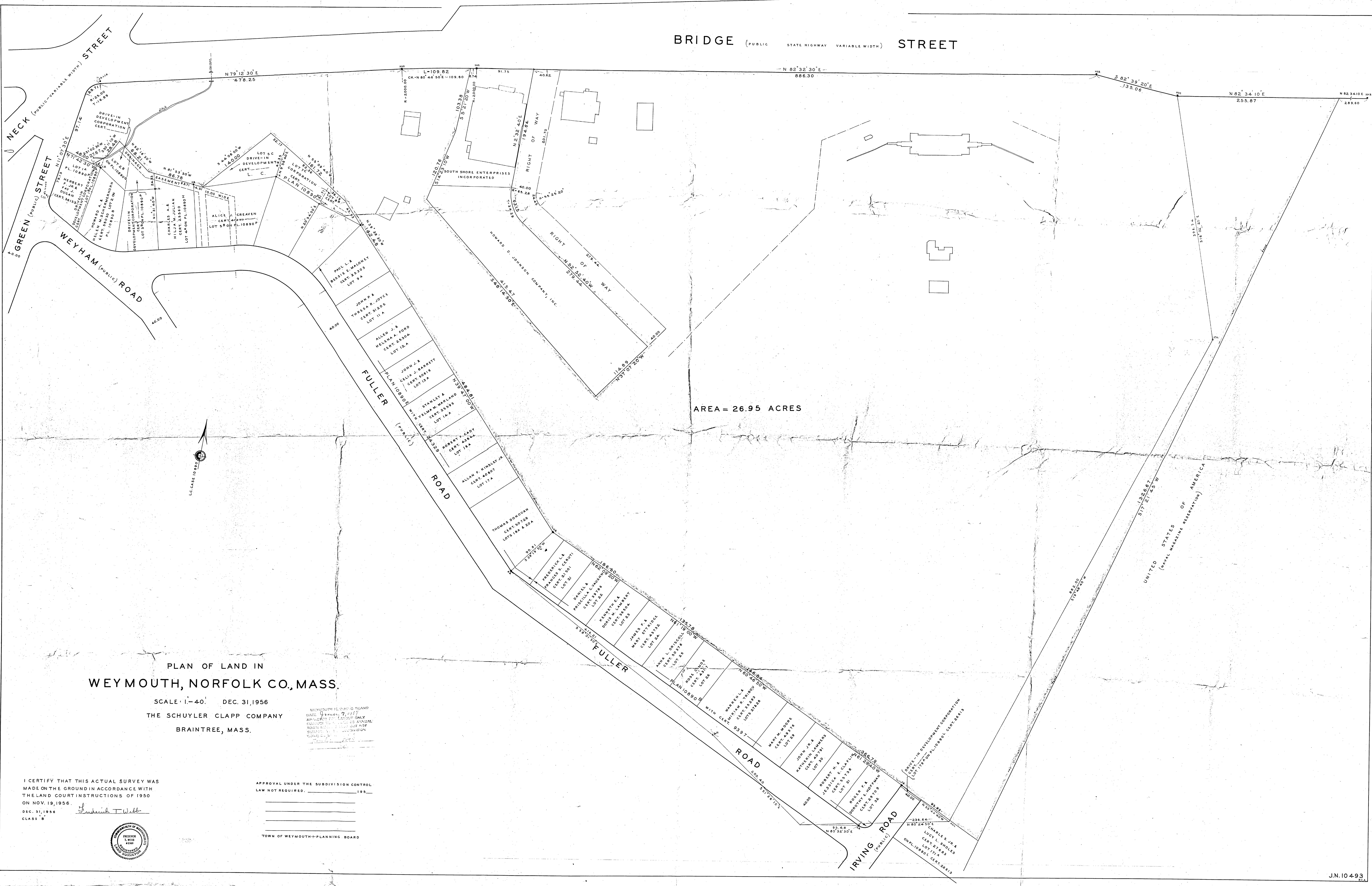


BRIDGE (PUBLIC STATE HIGHWAY VARIABLE WIDTH) STREET



AREA = 26.95 ACRES

PLAN OF LAND IN WEYMOUTH, NORFOLK CO., MASS.

SCALE 1" = 40' DEC. 31, 1956 THE SCHUYLER CLAPP COMPANY BRAintree, MASS.

WYOMOUTH RECORDING BOARD DATE 12/1/56 APPROVED FOR RECORDING ONLY

I CERTIFY THAT THIS ACTUAL SURVEY WAS MADE ON THE GROUND IN ACCORDANCE WITH THE LAND COURT INSTRUCTIONS OF 1950 ON NOV. 19, 1956. DEC. 31, 1956 CLASS 'B'

APPROVAL UNDER THE SUBDIVISION CONTROL LAW NOT REQUIRED. TOWN OF WEYMOUTH - PLANNING BOARD

