

Plan of Land in
MILTON — MASS.

Scale 100 feet to an inch.

June 27, 1956.

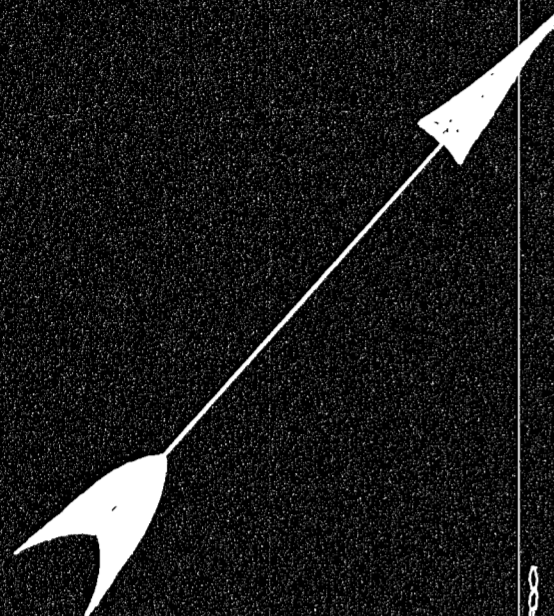
William S. Crocker, Civil Engr.
 46 Cornhill, Boston, Mass.

I certify that this survey was made on the ground in accordance
 with Land Court instructions of 1950. *Forw. A. Chase*
 OFFICE OF WM. S. CROCKER, REGISTERED LAND SURVEYOR.

APPROVAL UNDER THE
 SUBDIVISION CONTROL LAW
 NOT REQUIRED.
January 14, 1957
Alexander E. Manning
 FOR THE MILTON PLANNING BOARD

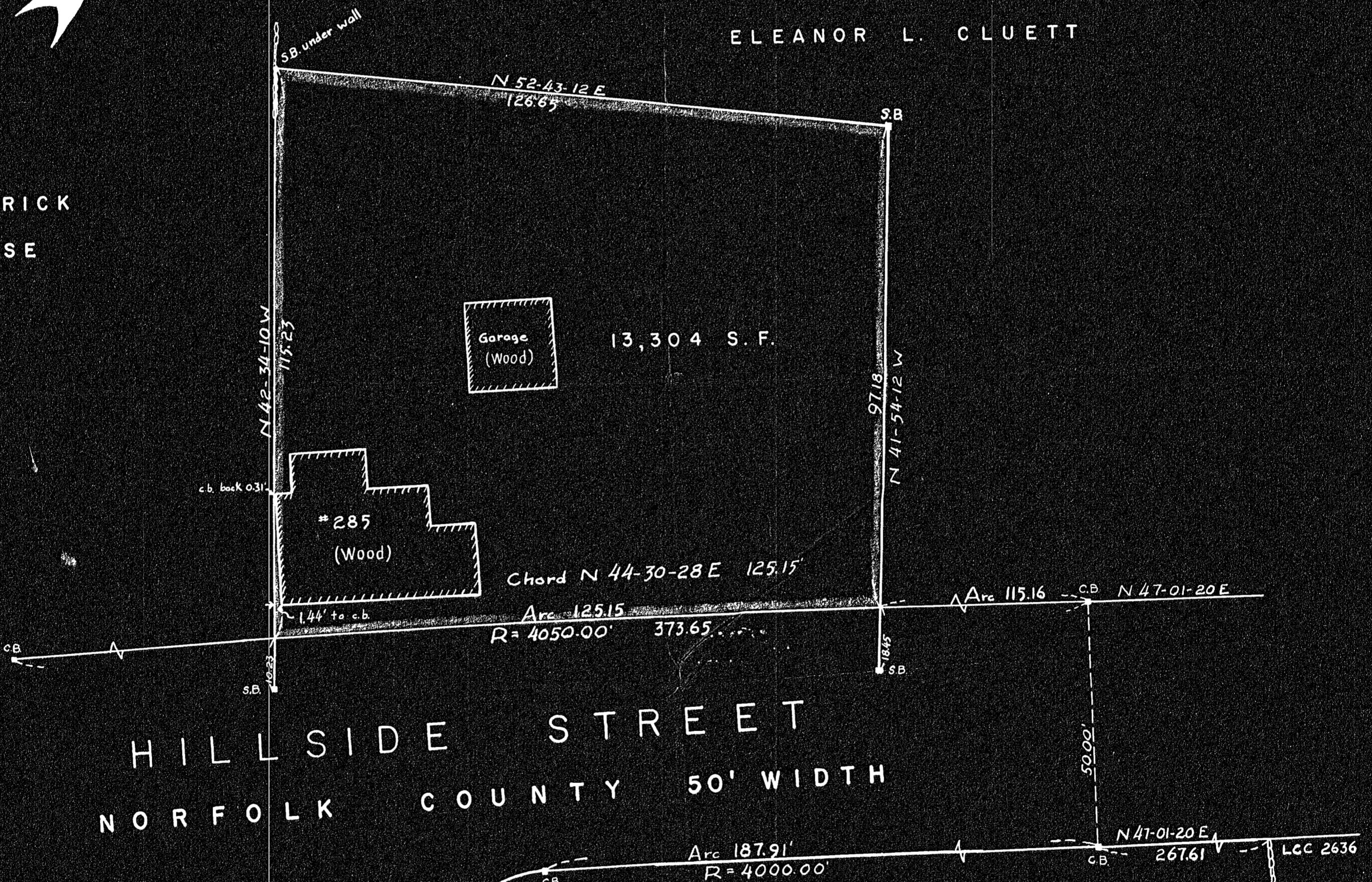
21278 A
 1-18-57
 By WES

BEARING	DISTANCE	N.	S.	E.	W.
S 44-30-28 W	125.15		89.251		87.731
N 42-34-10 W	115.23	84.862			77.951
N 52-43-12 E	126.65	76.713		100.774	
S 41-54-12 E	97.18		72.328	64.904	
		161.575	161.579	165.678	165.682



FREDERICK
CHASE

ELEANOR L. CLUETT



HILLSIDE STREET
NORFOLK COUNTY 50' WIDTH

FOREST ST.

Plan of Land in
MILTON - MASS.
Scale 20 feet to an inch.

June 25, 1956.

William S. Crocker, Civil Engr.
46 Cornhill, Boston, Mass.

APPROVAL UNDER THE
SUBDIVISION CONTROL LAW
NOT REQUIRED
January 14, 1957
Alexander E. Manning
FOR THE MILTON PLANNING BOARD

27278 A-2
MAY BE
FILED
1-18-57
WES

MILTON
P. 23

I certify that this actual survey was made on the
ground in accordance with Land Court instructions
of 1950.
June 25, 1956. Louis A. Chase
OFFICE OF WM. S. CROCKER, - REGISTERED LAND SURVEYOR.

BEARING	DISTANCE	E.	W.	N.	S.
N 5° 25' 52" E	423.25	40.060		421.350	
N 4° 22' 57" E	135.32	10.340		134.924	
N 5° 31' 42" E	360.00	34.682		358.326	
S 84° 49' 56" E	668.00	665.285			60.168
S 3° 37' 36" W	682.00		43.140		680.634
S 3° 36' 13" W	225.88		14.197		225.433
N 86° 39' 00" W	162.08		161.803	9.471	
N 84° 43' 36" W	194.18		193.358	17.847	
S 0° 54' 33" E	103.12	1.636			103.107
S 5° 22' 59" E	18.50	1.736			18.418
S 1° 03' 27" E	203.53	3.756			203.495
N 87° 09' 36" W	162.26		162.061	8.040	
N 86° 37' 02" W	115.27		115.069	6.802	
N 87° 03' 40" W	100.00		99.868	5.127	
N 86° 43' 03" W	100.00		99.836	5.726	
N 84° 59' 07" W	83.57		83.250	7.305	
N 3° 38' 47" W	331.97		21.113	331.298	
S 87° 00' 30" E	96.07	95.939			5.014
S 85° 56' 30" E	140.61	140.257			9.951
		993.691	993.695	1306.216	1306.220

HARLAND STREET

STEPHEN H. FORBES ET AL
LCC 2636



18.6 ACRES

RALPH A. COTE

GEORGE W. COUTTS, JR.
DORIS V. COUTTS

JAMES F. CAMPBELL

ROBERT L. JEPSON
ET AL

Plan of Land in
MILTON-MASS.
Scale 100 feet to an inch.
July 25, 1956. William S. Crocker, Civil Engr.
46 Cornhill, Boston, Mass.

APPROVAL UNDER THE
SUBDIVISION CONTROL LAW
(NOT REQUIRED).
January 14, 1957
Alexander Manning
FOR THE MILTON PLANNING BOARD

27278
MAY BE FILED
1-18-51
MILTON
By WES

I certify that this actual survey was made
on the ground in accordance with Land Court
instructions of 1950.
June 25, 1956. *Louis A. Chase*
OFFICE OF WM. S. CROCKER, REGISTERED LAND SURVEYOR.