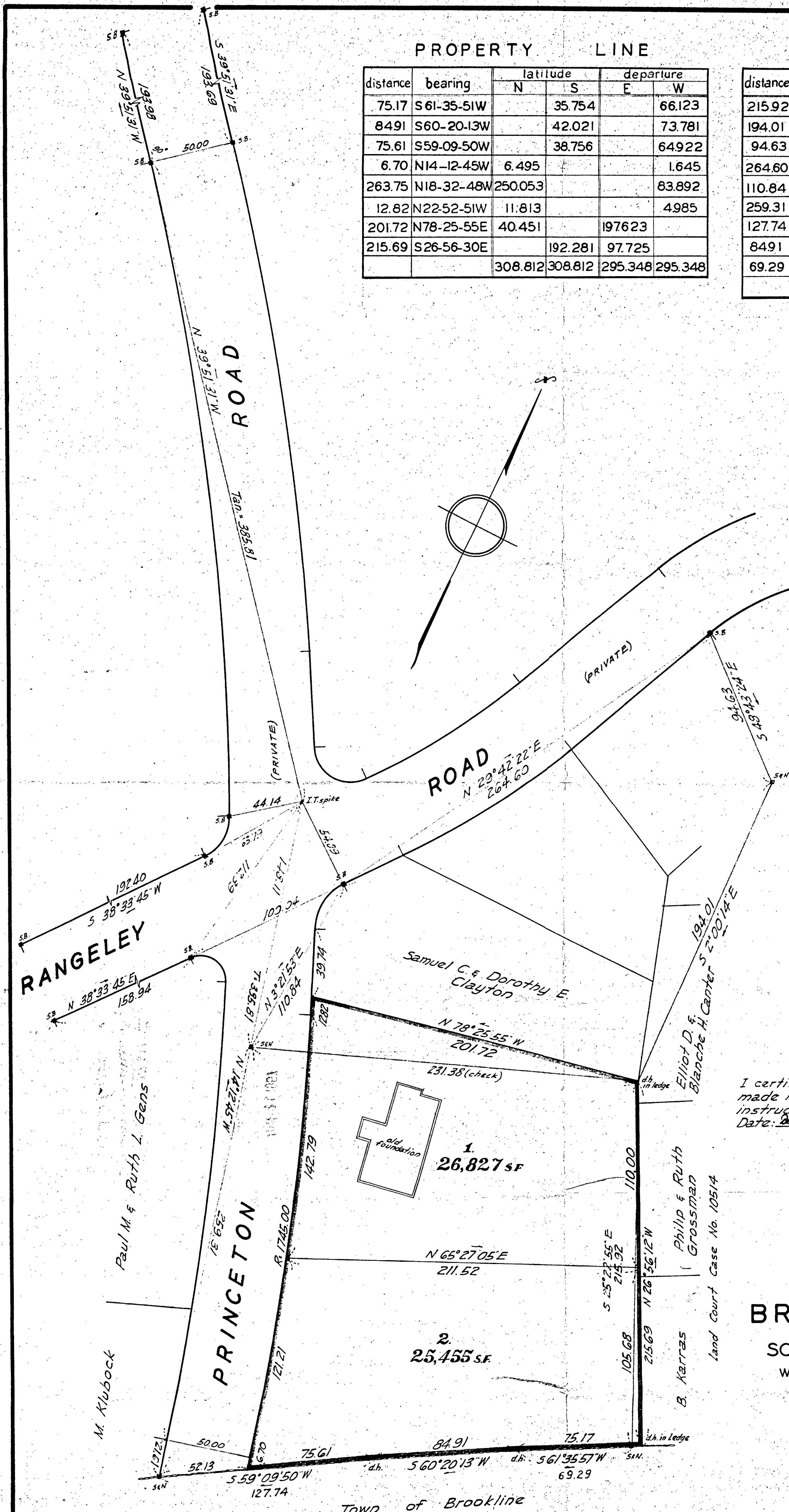


PROPERTY LINE

distance	bearing	latitude		departure	
		N	S	E	W
75.17	S 61-35-51W		35.754		66.123
84.91	S 60-20-13W		42.021		73.781
75.61	S 59-09-50W		38.756		64.922
6.70	N 14-12-45W	6.495			1.645
263.75	N 18-32-48W	250.053			83.892
12.82	N 22-52-51W	11.813			4.985
201.72	N 78-25-55E	40.451		197.623	
215.69	S 26-56-30E		192.281	97.725	
		308.812	308.812	295.348	295.348

distance	bearing	latitude		departure	
		N	S	E	W
215.92	N 25-22-55W	195.082			92.556
194.01	N 2-00-14W	193.888			6.784
94.63	N 48-43-24W	62.424			71.114
264.60	S 29-42-22W		229.829		131.124
110.84	S 3-21-53W		110.646		6.505
259.31	S 14-12-45E		251.376	63.666	
127.74	N 59-09-50E	65.479		109.685	
84.91	N 60-20-13E	42.021		73.781	
69.29	N 61-35-58E	32.957		60.951	
		591.851	591.851	308.083	308.083



I certify that this actual survey was made in accordance with Land Court instructions of 1950.
 Date: Dec. 19, 1956
James R. Gible
 Surveyor.

PLAN OF LAND
 IN
BROOKLINE + MASS.
 SCALE 1IN=40FT. DEC.19,1956
 WILLIAM J. FORD JR. CIVIL ENG'R
 302 WALNUT ST. NEWTONVILLE
 MASS.



Town of Brookline