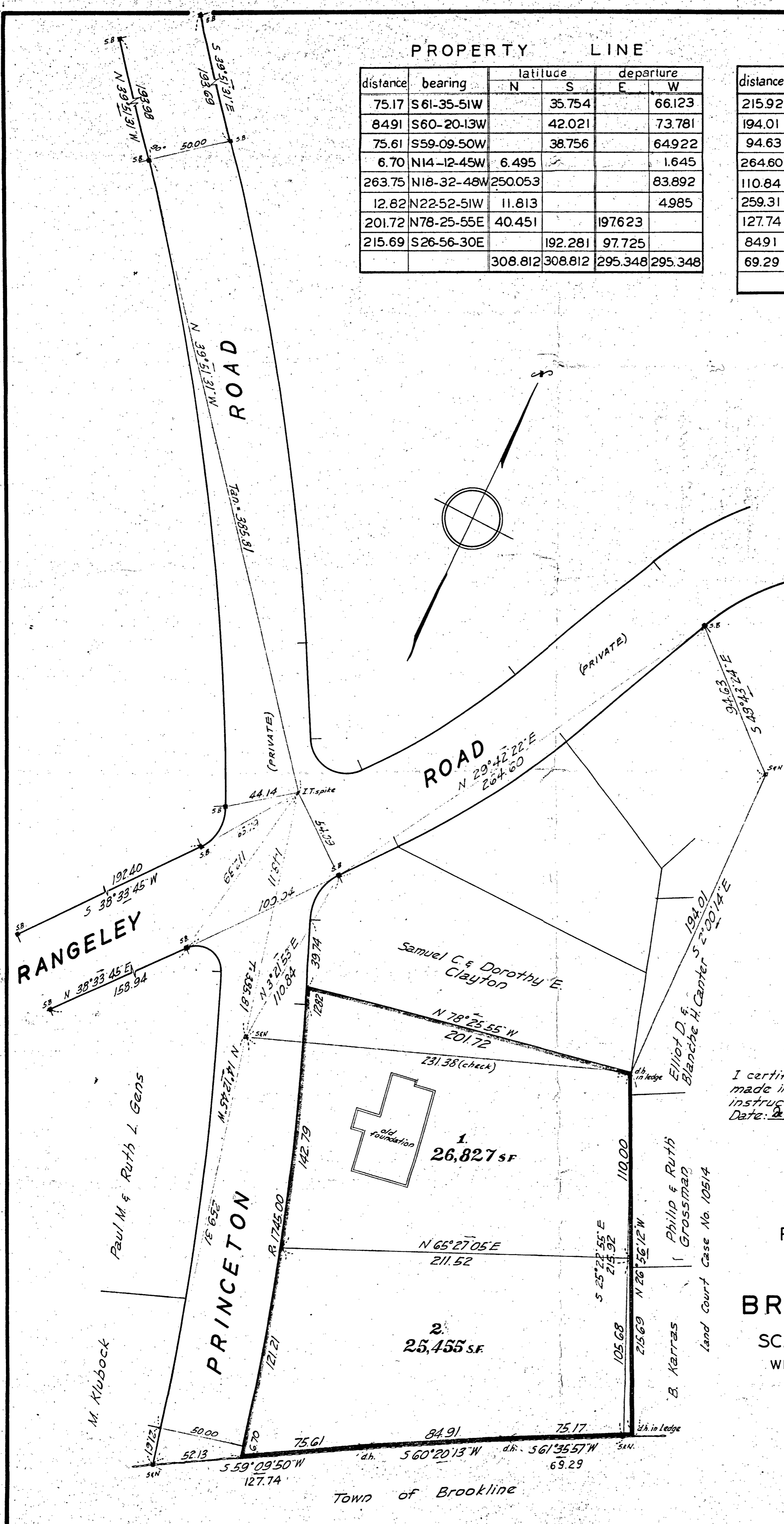


PROPERTY LINE

distance	bearing	latitude		departure	
		N	S	E	W
75.17	S61-35-51W		35.754		66.123
84.91	S60-20-13W		42.021		73.781
75.61	S59-09-50W		38.756		64.922
6.70	N14-12-45W	6.495			1.645
263.75	N18-32-48W	250.053			83.892
12.82	N22-52-51W	11.813			4.985
201.72	N78-25-55E	40.451		197.623	
215.69	S26-56-30E		192.281	97.725	
		308.812	308.812	295.348	295.348

distance	bearing	latitude		departure	
		N	S	E	W
215.92	N25-22-55W	195.082			92.556
194.01	N 2-00-14W	193.888			6.784
94.63	N48-43-24W	62.424			71.114
264.60	S29-42-22W		229.829		131.124
110.84	S 3-21-53W		110.646		6.505
259.31	S14-12-45E		251.376	63.666	
127.74	N59-09-50E	65.479			109.685
84.91	N60-20-13E	42.021			73.781
69.29	N61-35-58E	32.957			60.951
		591.851	591.851	308.083	308.083

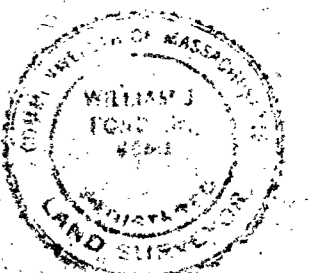


I certify that this actual survey was made in accordance with Land Court instructions of 1950.
 Date: Dec. 19, 1956
 J. R. G. Gable, Surveyor.

PLAN OF LAND
 IN
BROOKLINE + MASS.

SCALE 1 IN = 40 FT. DEC. 19, 1956

WILLIAM J. FORD JR. CIVIL ENG'R
 302 WALNUT ST. NEWTONVILLE
 MASS.



Town of Brookline