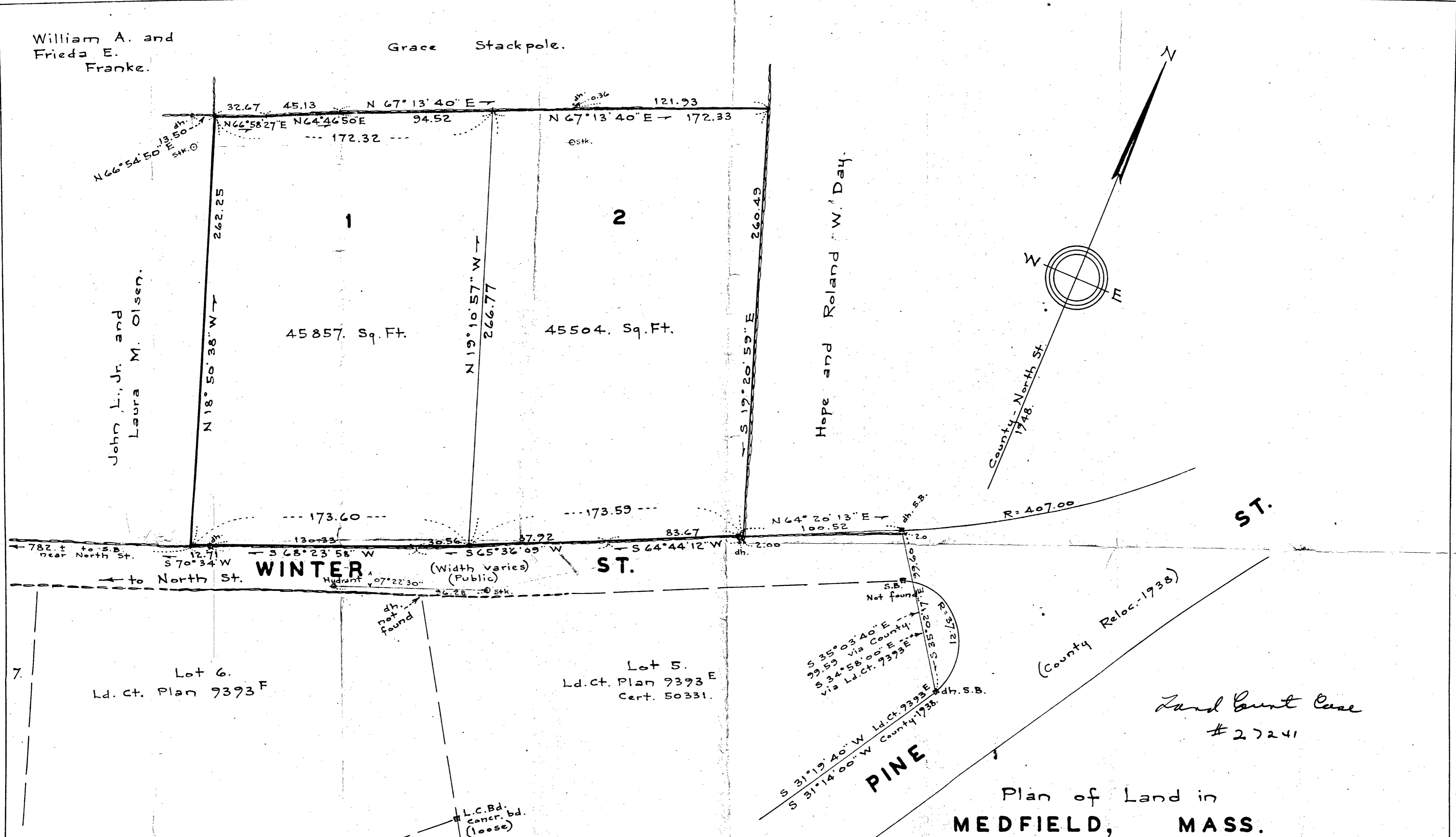


William A. and Frieda E. Franke.

Grace Stackpole.

John L., Jr. and Laura M. Olsen.

Hope and Roland W. Day.



WINTER ST.

ST.

ST.

PINE

Land Court Case # 27241

Plan of Land in
MEDFIELD, MASS.

Scale: 1 in. = 40 ft. Cheney Engineering Co.
Needham, Mass.

Dec. 27, 1956.



I certify that this survey was made with **Lead Coat** Instrument of 1950.
Frank L. Cheney
C.E.

Property Line Traverse.					
Bearing	Dist.	N.	S.	E.	W.
N 66° 58' 27" E	32.67	12.78		30.07	
N 64° 46' 50" E	45.13	19.23		40.83	
N 67° 13' 40" E	266.85	103.29		246.05	
S 19° 20' 59" E	260.49		245.78	86.31	
S 64° 44' 12" W	85.67		36.56		77.48
S 65° 36' 09" W	118.48		48.94		107.90
S 68° 23' 58" W	130.33		47.98		121.18
S 70° 34' 00" W	12.71		4.23		11.99
N 18° 50' 44" W	262.25	248.19			84.71
		383.49	383.49	403.26	403.26

Transit Line Traverse. (closure 1 in 33900)					
Bearing	Dist.	N.	S.	E.	W.
S 24° 34' 10" E	18.52		16.84	7.70	
N 67° 11' 50" E	235.04	91.09		216.47	
S 46° 25' 40" E	261.55		180.29	189.50	
S 55° 54' 50" W	163.21		91.47		135.17
S 76° 21' 20" W	174.50		41.16		169.58
N 24° 34' 10" W	243.92	221.83			101.42
		312.92	312.92	406.17	406.17

Under The Subdivision Control Law NOT Required.

Planning Board