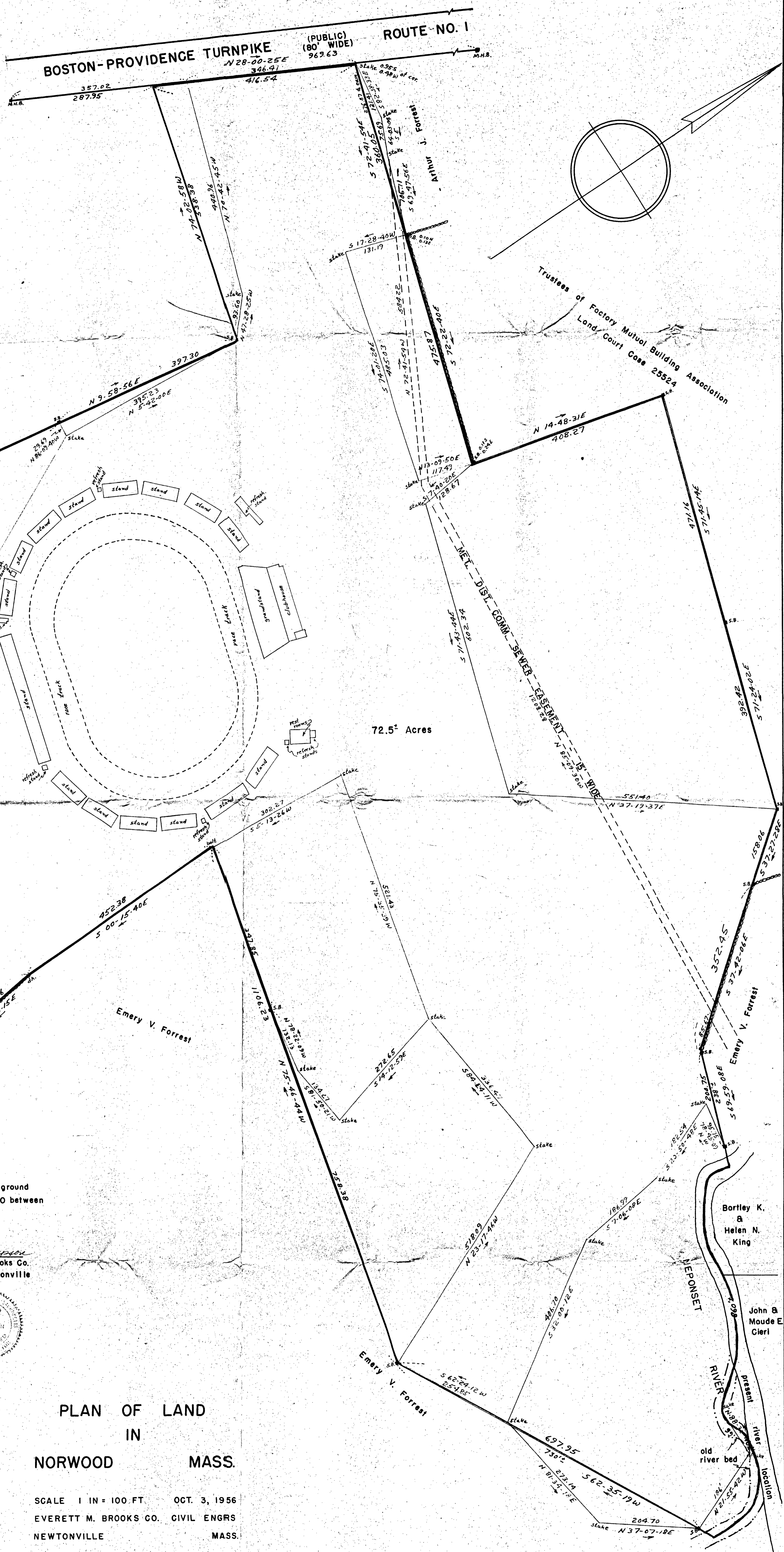


TRAVERSE

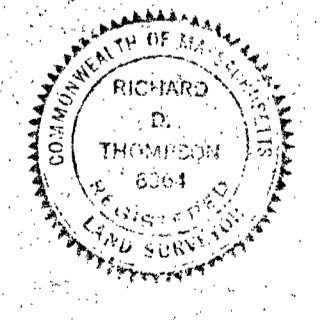
Bearing	Dist.	N	S	E	W
S 82-38-33E	121.41		15.55	120.41	
S 69-03-04E	75.69		32.12	68.06	
S 69-47-56E	166.11		52.36	155.87	
S 17-28-46W	131.19		125.13		39.40
S 74-01-20E	485.03		133.51	466.29	
N 13-09-50E	117.49	119.40		26.76	
S 7-40-20E	128.67		127.52	17.18	
S 71-43-44E	602.34		188.84	571.97	
N 37-19-37E	551.40	438.47		324.35	
S 37-27-28E	158.06		125.47	76.13	
S 37-22-06E	352.45		278.86	215.54	
S 49-57-08E	200.75		68.71	188.63	
N 78-45-09W	96.75	18.68			93.91
S 20-57-48E	182.54		170.59	64.96	
S 7-06-09E	186.99		185.56	23.12	
S 32-00-12E	406.70		244.89	215.54	
S 62-24-12W	254.85		118.06		225.86
N 23-17-46W	518.09	475.86			204.90
S 84-24-11W	336.47		32.82		334.87
N 75-35-29W	521.42	129.73			505.04
S 5-13-26W	362.27		301.01		27.52
S 00-15-40E	452.38		452.38	2.06	
S 6-40-15E	192.46		191.76	22.34	
S 2-02-20E	108.83		108.76	3.87	
S 8-02-47W	78.44		78.66		11.12
N 64-26-15W	501.88	200.31			459.30
N 25-34-20W	845.04	852.47			407.93
N 5-42-00E	395.25		393.28	39.25	
N 47-28-25W	93.69		63.27		68.98
N 70-42-45W	440.86		145.65		416.21
N 28-00-25E	346.41		305.84		162.67
		3137.91			2795.04



72.5 Acres

I certify that this actual survey was made on the ground
in accordance with the Land Court Instructions of 1950 between
Sept. 13 and Sept. 28, 1956.

Date Oct. 25, 1956
Richard D. Thompson
Surveyor for Everett M. Brooks Co.
259 Walnut St. Newtonville



PLAN OF LAND
IN
NORWOOD MASS.

SCALE 1 IN = 100 FT. OCT. 3, 1956
EVERETT M. BROOKS CO. CIVIL ENGRS
NEWTONVILLE MASS.

APPROVAL UNDER SUBDIVISION CONTROL LAW
NOT REQUISITE
John E. Bamber
Robert J. Sullivan
James H. Kelley
Harold A. Brown
FORWARD PLANING BOARD
NORWOOD, MASS.

NOTE: Deed to Right of Way
over above property recorded
at Norfolk Registry of Deeds
Lib. 2767 Fol. 360