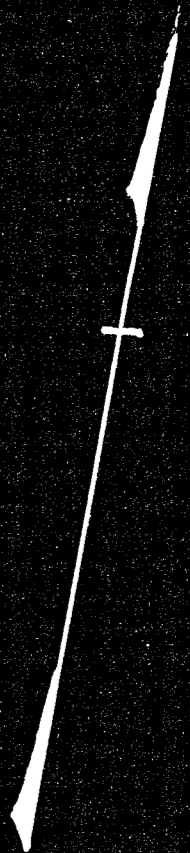


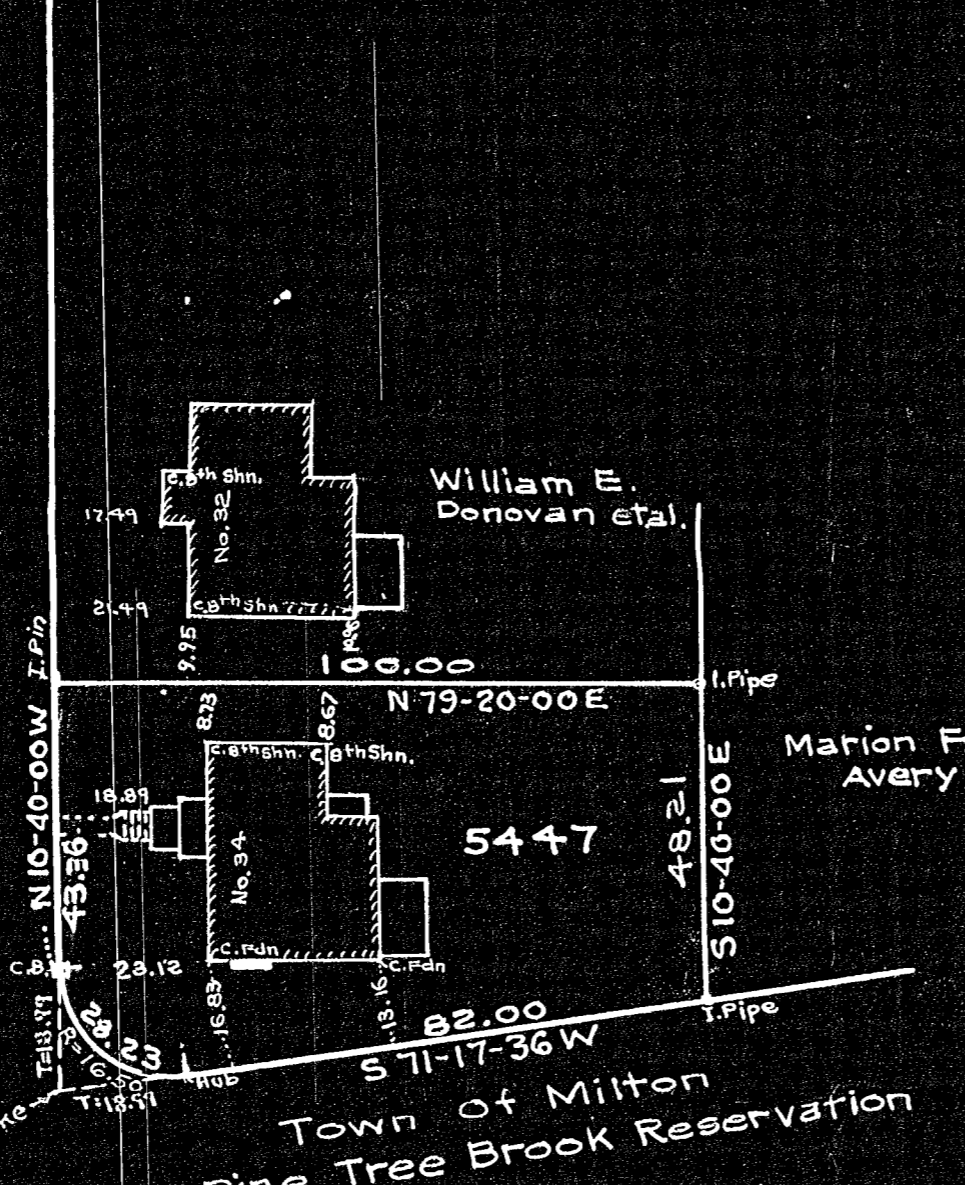
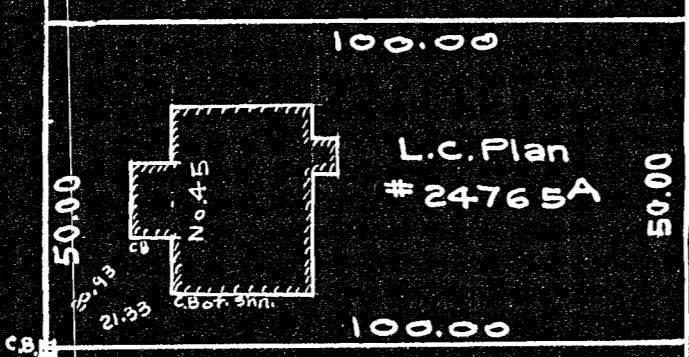
AUDUBON RD.
(Public)



CRESCENT

PARKWAY

(Public)
40' Wide



APPROVAL UNDER THE
SUBDIVISION CONTROL LAW
NOT REQUIRED.
DATE *November 30, 1956*
Alexander E. Manning
FOR THE MILTON PLANNING BOARD

INTERIOR ANGLE	BEARING	DISTANCE	LATITUDE		DEPARTURE	
			N.	S.	E.	W.
90-00-00	N 79-20-00 E	100.00	18.509		98.272	
98-02-24	S 10-40-00 E	48.21		47.377	8.923	
81-57-36	S 71-17-36 W	100.99		32.390		95.655
90-00-00	N 10-40-00 W	62.33	61.253			11.537
360-00-00			79.762	79.767	107.195	107.192

**PLAN OF LAND
MILTON, MASS.**

Scale: 30 feet to an inch.
November 17, 1956.
Joseph Selwyn - Civil Engineer
14 Linden Ave., Belmont.

I certify that this actual survey was made on the ground in accordance with the Land Court Instructions of 1950 on Nov. 17, 1956
Nov. 17, 1956, *Joseph Selwyn* C.E.