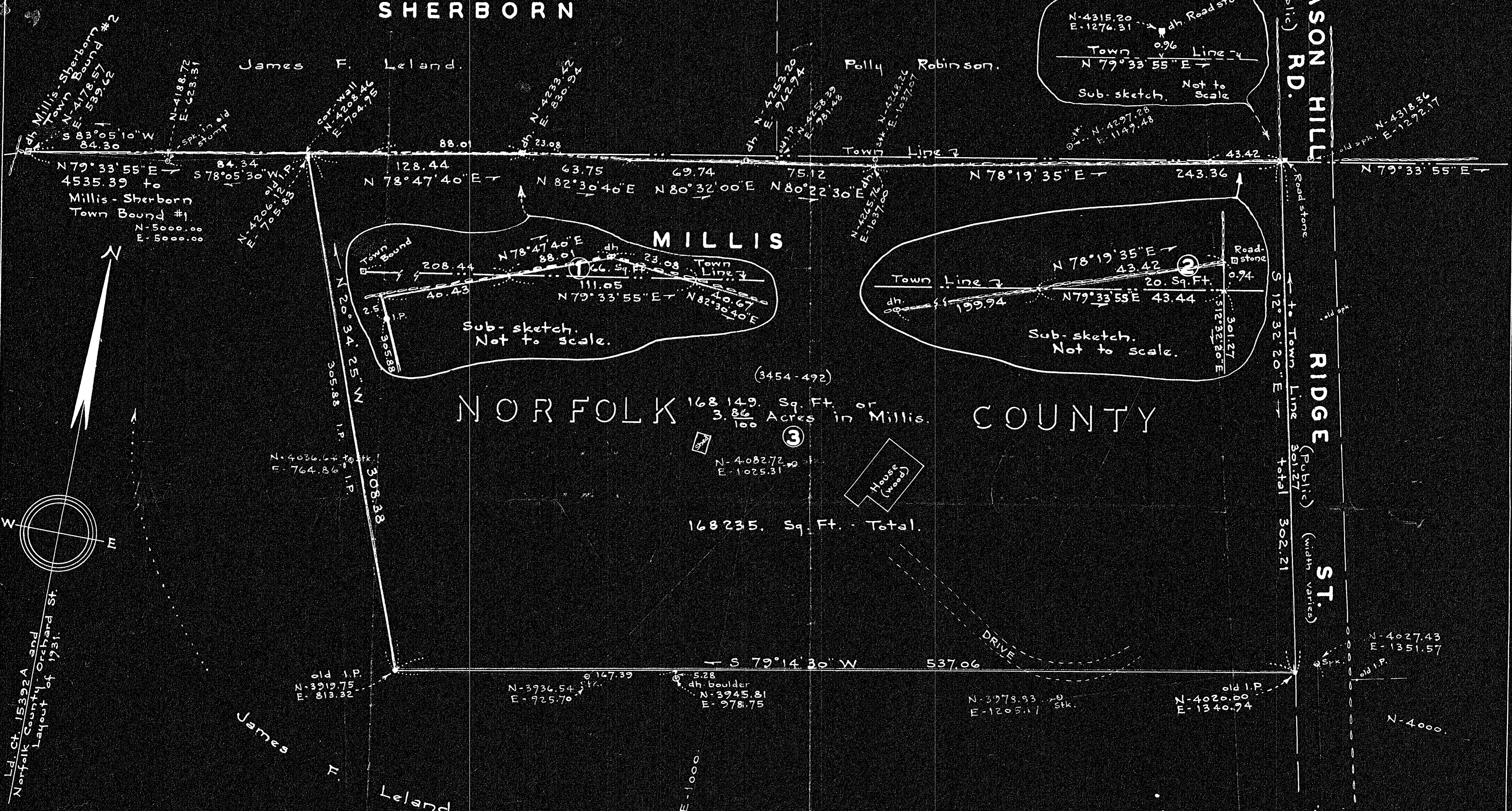


MIDDLESEX COUNTY SHERBORN

MILLIS NORFOLK COUNTY



Ld. Ct. 1532A and Norfolk County Orchard St. Layout of 1951.

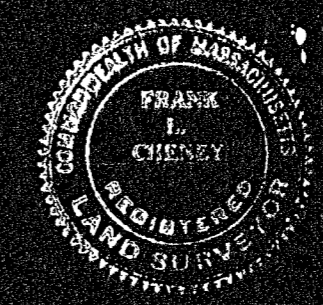
Approval Under The Subdivision Control Law NOT Required.
 Talbot Dewey
 James R. M. O'Donoghue
 Planning Board - Millis
 Date 10/27/56

Approval Under The Subdivision Control Law NOT Required.
 Planning Board - Sherborn
 Date

27183
 12-17-56 YES
 1 Bd.

I certify this survey was made in accordance with Land Court rules of 1950.
 Frank L. Cheney
 Registered Land Surveyor

Plan of Land in
MILLIS & SHERBORN, MASS
 Scale: 1 in. = 40 ft. Cheney Engineering Co.
 Needham, Mass.
 Oct. 4, 1956.



St. to Middlesex St.
 2500 ± to Middlesex St. connecting to Ld. Ct. Plans 13855A and 14659A