

17,257 SQ. FT.

L.C. CASE NO. 21040 A

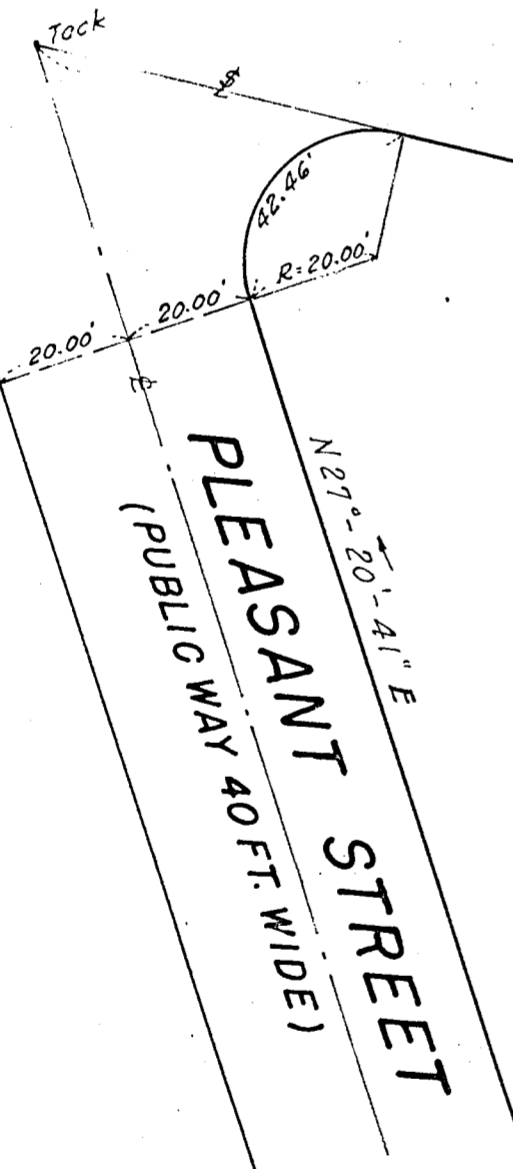
L.C. CASE NO. 9156 B

PRIVATE WAY

QUARRY

(PUBLIC WAY 40 FT. WIDE)

LANE

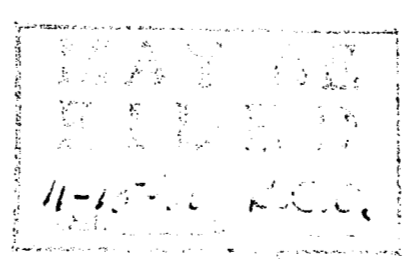


Bearing	Dist.	N	S	E	W
N44°-10'-39"W	33.11'	23.749'			23.075'
N31°-00'-19"W	16.53'	14.168'			8.515'
N35°-54'-41"E	154.69'	125.287'		90.730'	
N53°-22'-11"E	68.23'	40.703'		54.749'	
S36°-39'-14"E	52.23'		41.902'	31.180'	
S37°-23'-55"E	50.00'		39.721'	30.368'	
S37°-25'-59"E	16.57'		13.158'	10.072'	
S45°-00'-17"W	50.12'		35.437'		35.443'
N41°-00'-39"W	47.00'	35.466'			30.841'
S47°-31'-29"W	161.65'		109.155'		119.225'
		239.373'	239.373'	217.099'	217.099'

APPROVAL UNDER THE SUBDIVISION CONTROL LAW (NOT REQUIRED).  
 DATE: November 30, 1956  
 Alexander E. Manning  
 FOR THE MILTON PLANNING BOARD

I certify that this actual survey was made on the ground in accordance with Land Court Instructions of 1950, on Sept. 8, 1956.

Sept 8, 1956 H. M. Fletcher



PLAN OF LAND  
**MILTON, MASS.**  
 SCALE 1 IN. = 30 FT. SEPT. 8, 1956  
 H. M. FLETCHER, SURVEYOR  
 95 MILTON AVE., HYDE PARK