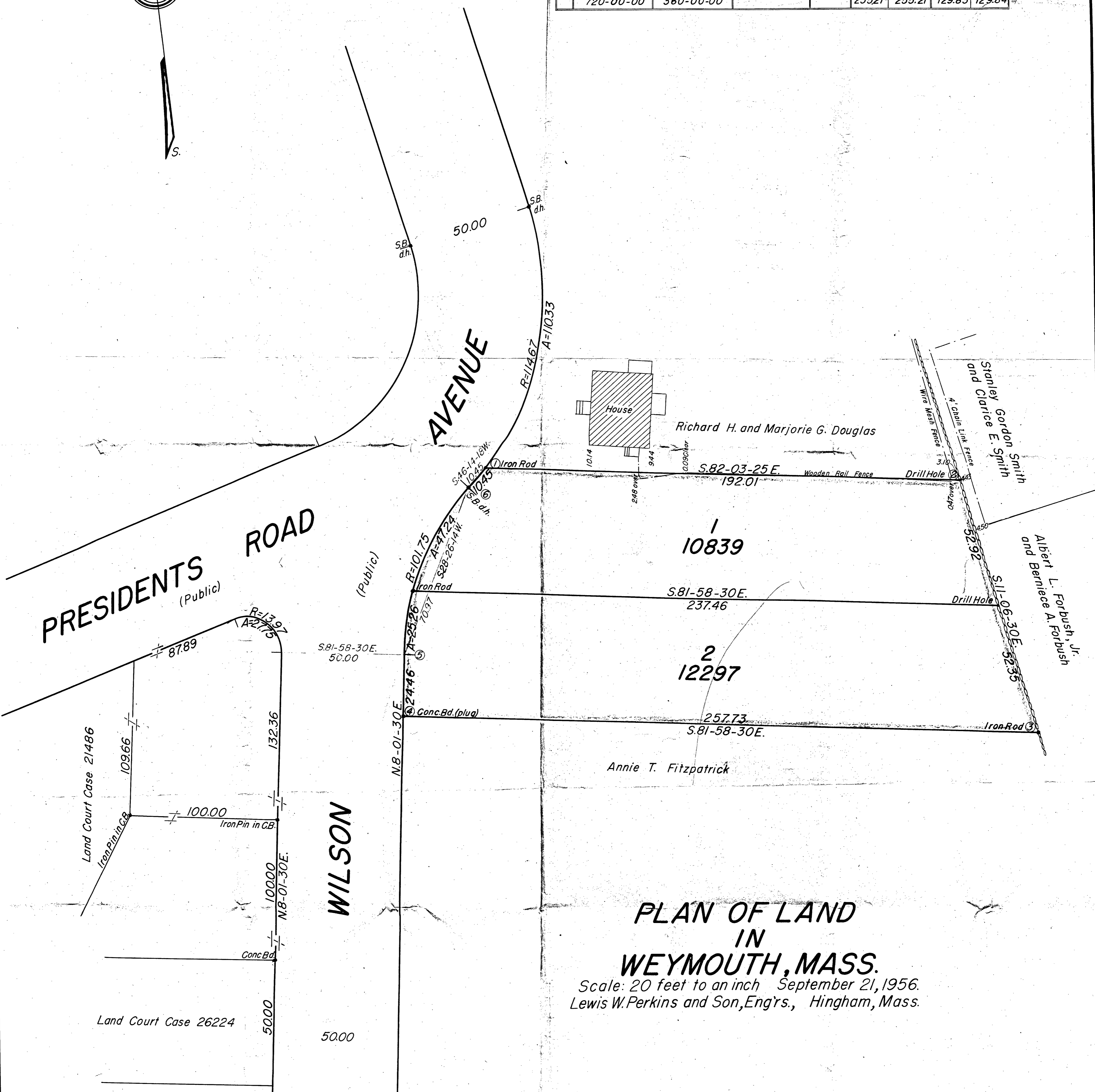


Class A Survey

Sta.	Interior Angle	Defl. Angle	Azimuth	Dist.	+Sine	-Sine	+Cos	-Cos
1	128-17-43	51-42-17	277-56-35	192.01		190.17	26.53	
2	109-03-05	70-56-55	348-53-30	105.27		20.28	103.30	
3	70-52-00	109-08-00	98-01-30	257.73	255.21			35.98
4	90-00-00	90-00-00	188-01-30	24.46		3.41		24.22
5	159-35-16	20-24-44	208-26-14	70.97		33.80		62.41
6	162-11-56	17-48-04	226-14-18	10.45		7.55		7.23
	720-00-00	360-00-00			255.21	255.21	129.83	129.84



**PLAN OF LAND
IN
WEYMOUTH, MASS.**

Scale: 20 feet to an inch September 21, 1956.
Lewis W. Perkins and Son, Eng'rs., Hingham, Mass.

I certify that this actual survey was made on
the ground in accordance with the Land Court
Instructions of 1950 on September 12, 1956.
September 21, 1956 William W. Perkins Eng'r.