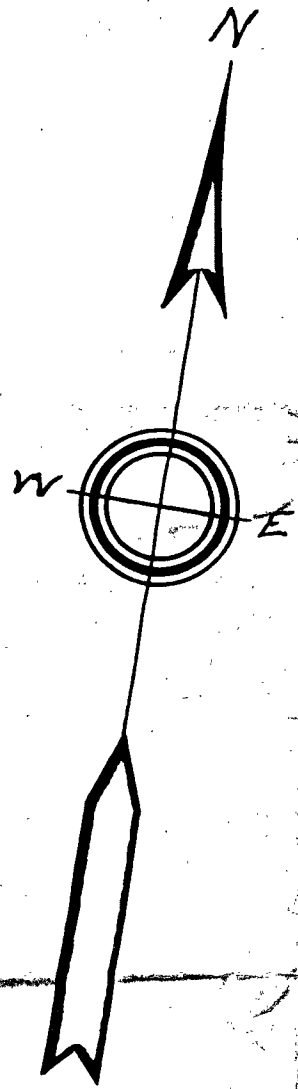


POWDRELL AVE.

Land Court
Certificate 8068

PLAN OF LAND IN RANDOLPH
Scale: 1 in. = 30 ft. Nov. 12, 1956
W. H. Pope Surveyor
123 School St. Avon, Mass.

Sta.	Dist.	Bear.	Lat.		Dept.	
			N	S	E	W
A	29.65	S10° 22' 00"E		29.166	5.335	
B	70.38	S11° 48' 25"E		68.891	14.399	
C	93.59	N79° 49' 30"E	16.533		92.118	
D	100.00	N10° 10' 30"W	98.427			17.666
E	95.69	S79° 49' 30"W		16.904		94.185
			114.960	114.961	111.852	111.851

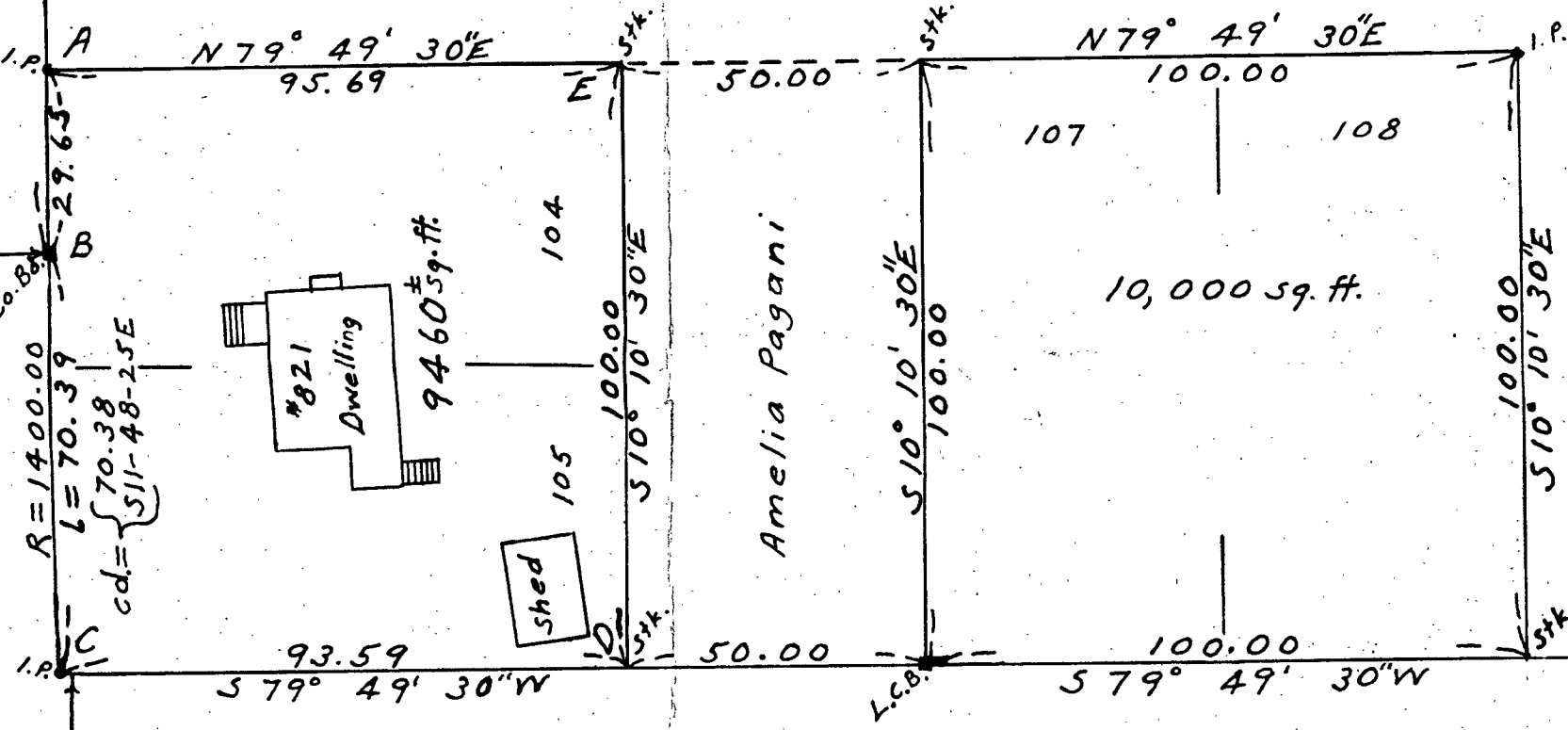


ST.

(Public)

540.45 N10° 22' 00"W

Ashley A. & Ruth P. Smythe



FULLER

(Private)

ST.

Edward T. Dwyer

Mary Hickey

Anna L. Murray

I certify that this actual survey was made on the ground in accordance with the Land Court instructions of 1950.
W. H. Pope Surveyor