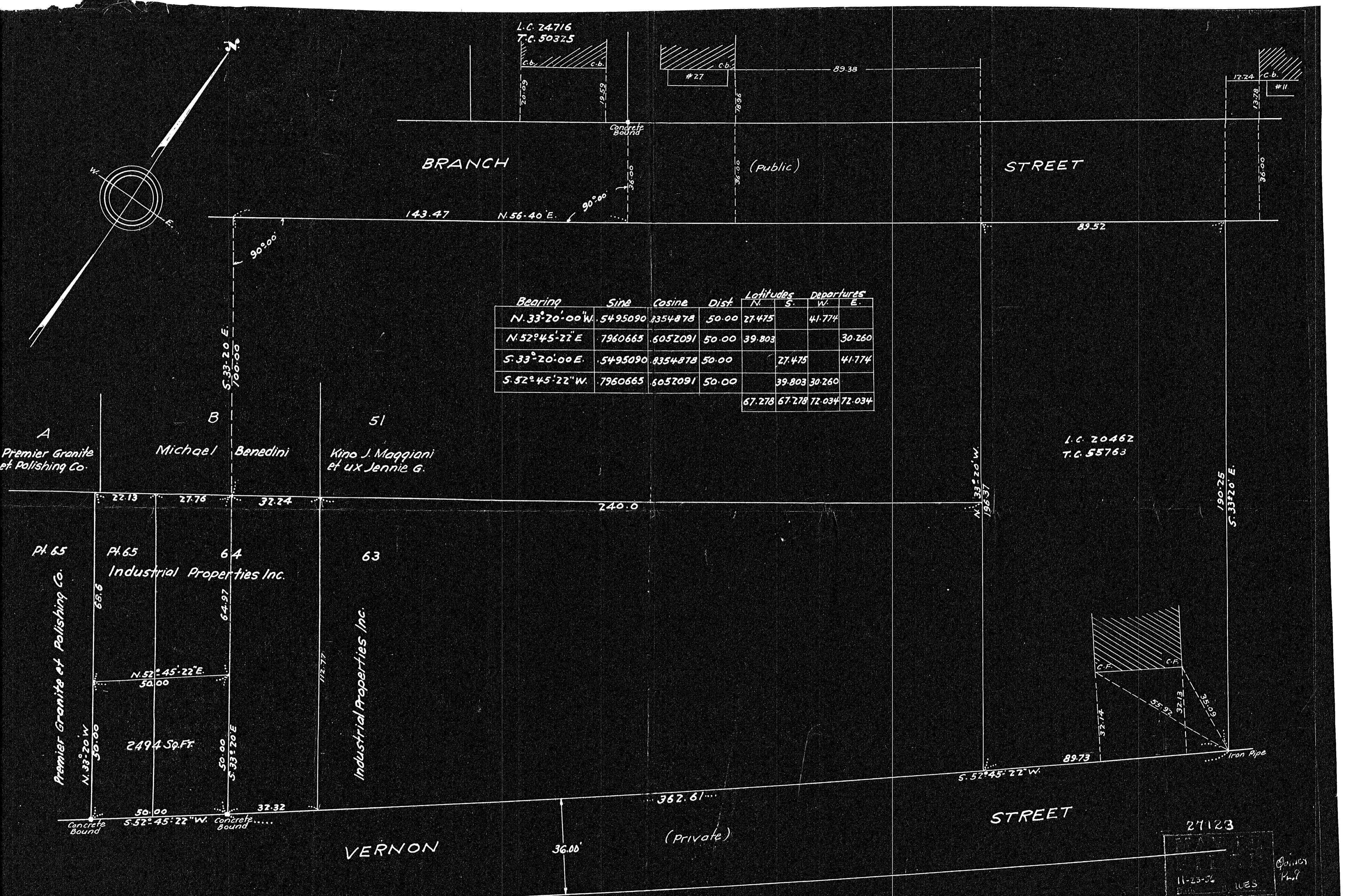


Bearing	Sine	Cosine	Dist	Latitudes		Departures	
				N	S	W	E
N. 33° 20' 00" W.	.5495090	.8354878	50.00	27.475		41.774	
N. 52° 45' 22" E.	.7960665	.6052091	50.00	39.803			30.260
S. 33° 20' 00" E.	.5495090	.8354878	50.00		27.475		41.774
S. 52° 45' 22" W.	.7960665	.6052091	50.00		39.803	30.260	
				67.278	67.278	72.034	72.034



For the 2494 Sq. Ft. Fronting on Vernon Street
 Approval under Subdivision
 Control Law not Required
 Planning Board Date: 11-6-56

Regis J. Harrington
 Director of Planning

Plan of Land in Quincy, Mass.
 Scale = 20 Feet to an Inch
 November 5, 1956
 Edward Leone, Surveyor
 127 Merrymount Rd. Quincy

I Certify that this actual survey was made on
 the ground in accordance with Land Court
 instructions of 1950, on November 3, 1956
 Edward Leone, Surveyor

27123
 11-23-56
 LUES
 Quincy
 Mass.