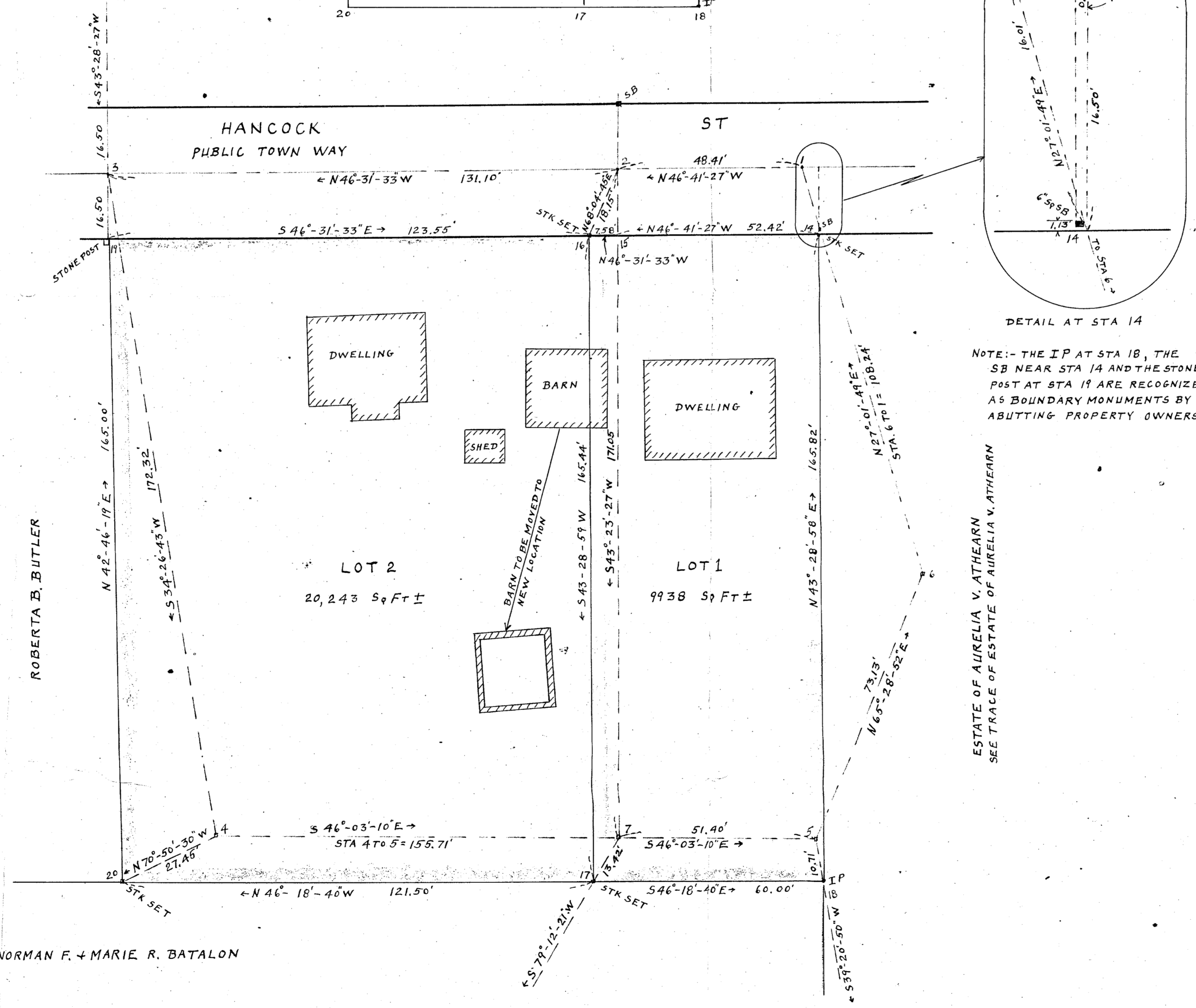


SKETCH SHOWING LOCATION OF PROPERTY WITH RELATION TO WEST ST. AND HIGHWAY BOUNDS THEREON  
SCALE 1 INCH = 40 FEET

TRACE OF ESTATE OF AURELIA V. ATHEARN  
 DEED SHELDON TO OLNEY P. FOLLETT + DEBRAH FOLLETT, 1848, REC'D BK 178-239  
 DEED DEBORAH FOLLETT TO A. M. MORRISON, 1872, REC'D BK 434-4  
 DEED O. P. FOLLETT TO A. M. MORRISON, 1903, REC'D. BK. 955-211  
 PROBATE # 48183, AMANDA M. MORRISON [AURELIA V. ATHEARN, DAUGHTER, HEIR]  
 AURELIA V. ATHEARN [DECEASED, NO PROBATE] LEAH WILLIS, DAUGHTER, OF  
 58 HANCOCK ST., WRENTHAM, MASS, HEIR

IN OLD DEEDS HANCOCK ST. IS SOMETIMES REFERRED TO AS "THE ROAD LEADING FROM THE BAPTIST MEETING HOUSE TO THOMAS RHODES"



NOTE: - THE IP AT STA 18, THE SB NEAR STA 14 AND THE STONE POST AT STA 19 ARE RECOGNIZED AS BOUNDARY MONUMENTS BY ADJUTING PROPERTY OWNERS

ESTATE OF AURELIA V. ATHEARN  
 SEE TRACE OF ESTATE OF AURELIA V. ATHEARN

LAND IN WRENTHAM MASS  
 BELONGING TO  
 PEARL M WOOD and ELIOT S WOOD

SCALE 1 INCH = 20 FEET  
 JOHN A WARREN JUNE 18, 1956

I CERTIFY THAT THIS ACTUAL SURVEY WAS MADE ON THE GROUND IN ACCORDANCE WITH THE LAND COURT INSTRUCTIONS OF 1950 ON OR BETWEEN APRIL 18, 1954 AND MAY 3, 1954  
 JUNE 18, 1956  
 John A. Warren SURVEYOR  
 148 FRANKLIN ST., WRENTHAM, MASS

NO APPROVAL NECESSARY UNDER THE SUB-DIVISION CONTROL LAW  
 DATE 19 June 1956 WRENTHAM PLANNING BOARD  
 Susan V. Scadd  
 John A. Warren  
 Robert C. Callahan  
 Angus R. McVernon

CLASS B SURVEY FOR TRAVERSE TABLE SEE ACCOMPANYING SHEET

STA	Δ	BEARINGS	DIST.	COS	SIN	LAT		DEP	
						N	S	E	W
14	89°-49'-35"	N 46°-41'-27"W	52.42'	.68593478	.72766303	35.956			38.144
15	180°-09'-54"	N 46°-31'-33"W	7.58'	.68802745	.72568466	5.215			5.501
16	90°-00'-32"	S 43°-28'-59"W	165.44'	.72557791	.68814003		120.042		113.848
17	90°-12'-21"	S 46°-18'-40"E	60.00'	.69074220	.72310111		41.445	43.386	
18	89°-47'-38"	N 43°-28'-58"E	165.82'	.72558125	.68813651	120.316		114.107	
	360°-00'-00"		451.26'			161.487	161.487	157.493	157.493
16	89°-59'-28"	S 43°-28'-59"W	165.44'	.72557791	.68814033		120.042		113.848
17	89°-47'-39"	N 46°-18'-40"W	121.50'	.69074220	.72310111	83.925			57.857
20	90°-55'-01"	N 42°-46'-19"E	165.00'	.73406247	.67908194	121.120		112.048	
19	89°-17'-52"	S 46°-31'-33"E	123.55'	.68802745	.72568466		85.004	89.458	
	360°-00'-00"		575.49'			205.045	205.048	201.706	201.705

LOCUS OF SURVEY  
 SCALE 1 INCH = 20 FEET