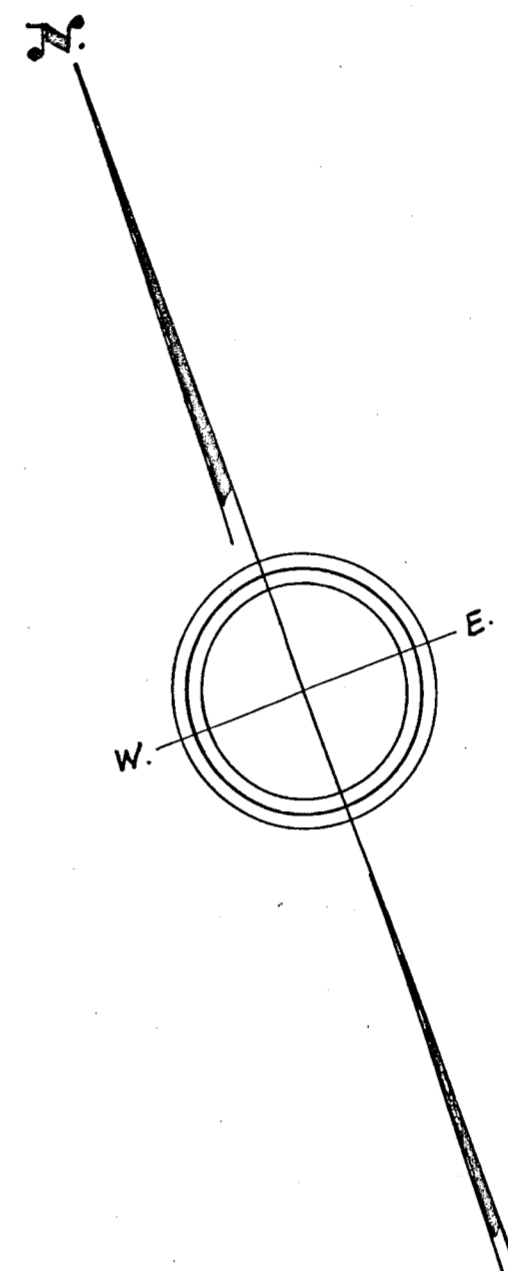
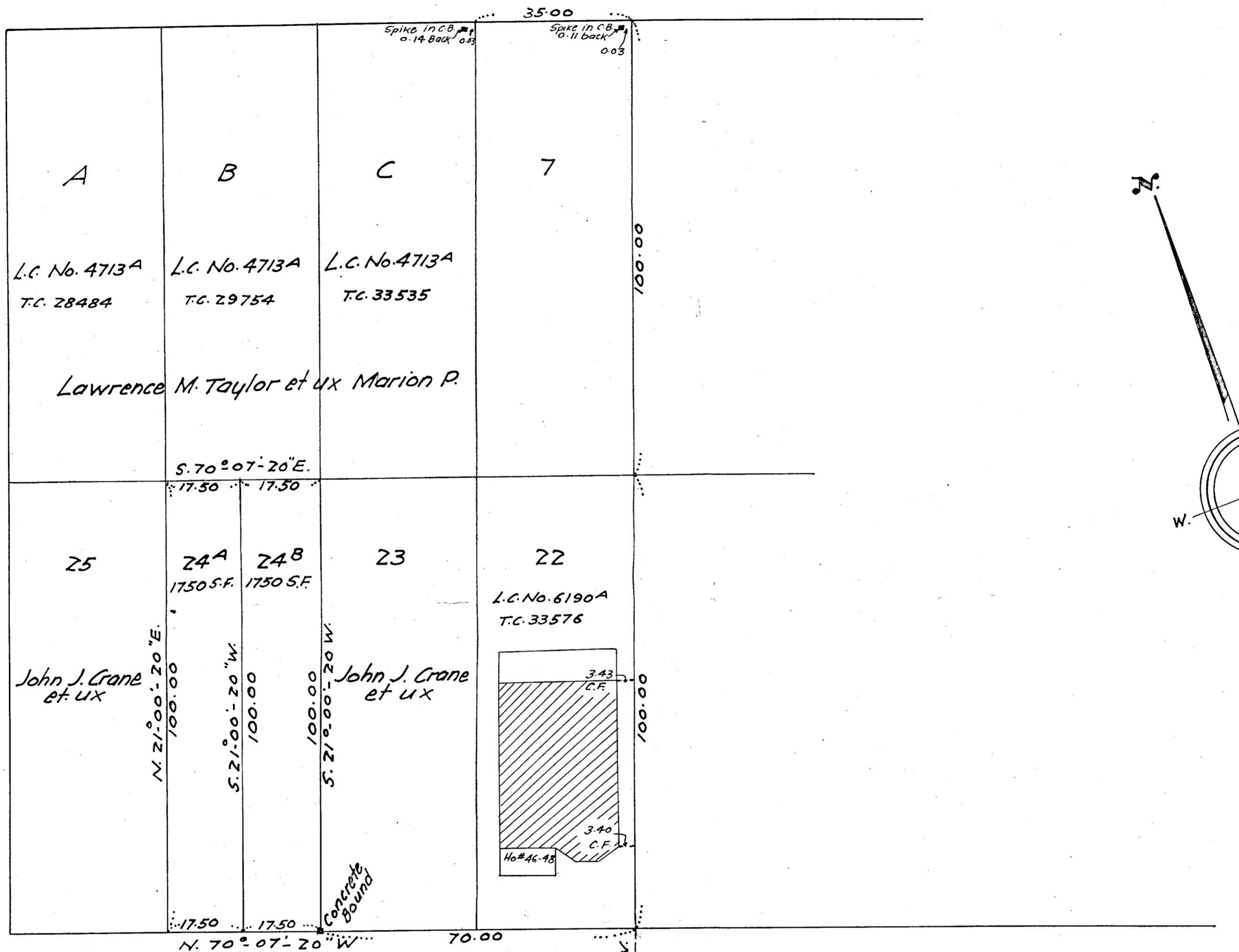


BAY VIEW (Public) AVE.

RATCHFORD ST.

(Private)

RATCHFORD ST.



CROSBY (Public) ST.

ST.

Lot 24A to be used in conjunction with Lot 25 and Lot 24B to be used in conjunction with Lot 23.

Approval under subdivision control law not required PLANNING BOARD

Date: 10-30-56

Regis J. Harrington Director of Planning

Plan of Land in Quincy, Mass.

Scale = 20 Feet to an Inch

October 29, 1956

Edward Leone - Surveyor
127 Merrymount Rd. Quincy

I certify that this survey was made on the ground in accordance with Land Court instructions of 1950.
Edward Leone - Surveyor