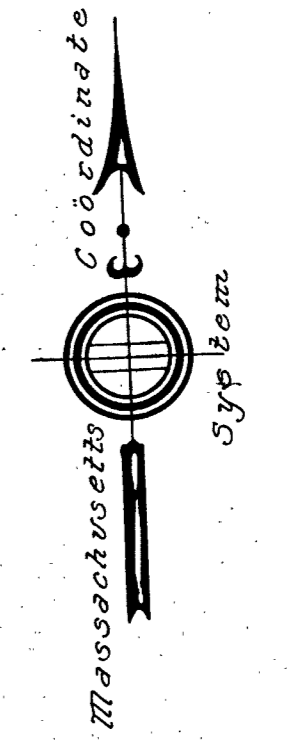
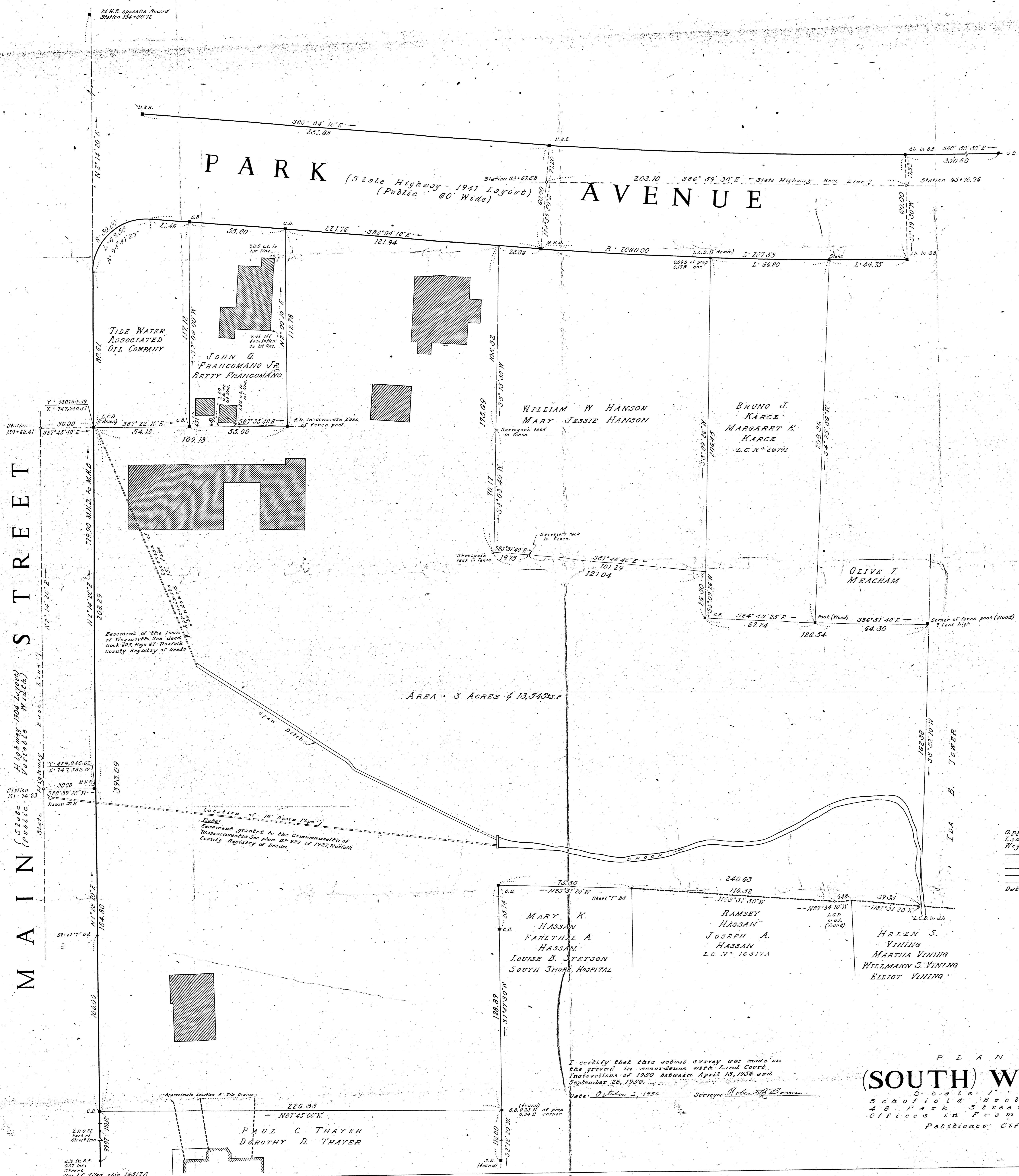


M A I N S T R E E T

P A R K A V E N U E
(State Highway - 1941 Layout)
(Public - 60' Wide)



Approval under the Subdivision Control Law not required.
Weymouth Planning Board.

Date: _____

Note: Massachusetts Control obtained from Station 93D of Station 93G. Station 93D Grid Azimuth to Station 93C - 177° 15' 34.3"

I certify that this actual survey was made on the ground in accordance with Land Court Instructions of 1950 between April 13, 1956 and September 28, 1956.
Date: October 2, 1956 Surveyor: *Robert B. Bowen*

P L A N O F L A N D
I N
(SOUTH) WEYMOUTH, MASS.
Scale: 1" = 20'. September 28, 1956.
Schofield Brothers, Registered Civil Engineers
48 Park Street, Framingham, Massachusetts.
Offices in Framingham & Orleans, Massachusetts.
Petitioner: *Cifrino Weymouth Realty Trust.*