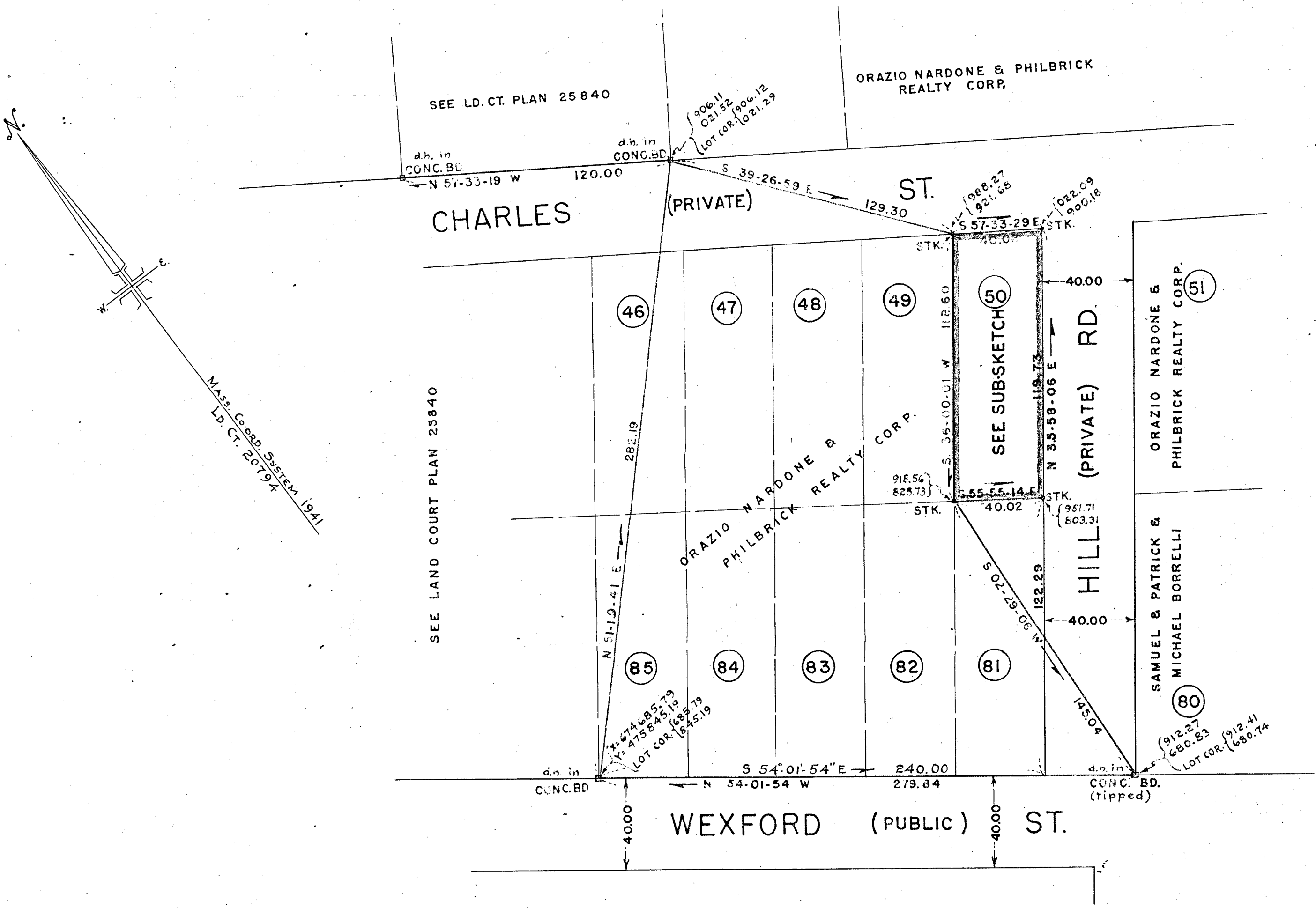
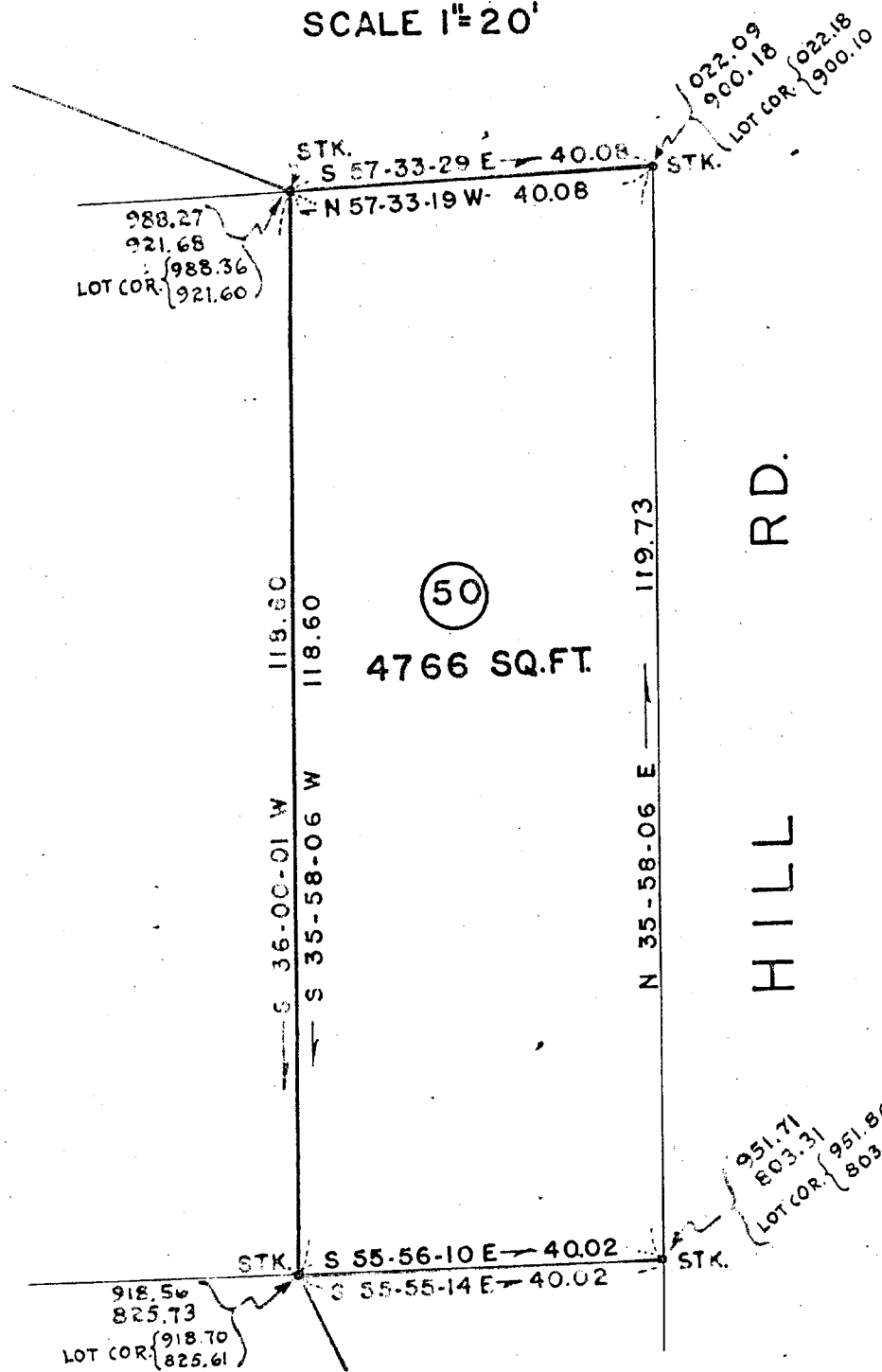


TRANSIT LINE TRAVERSE						X	Y
BEARING	DIST.	N	S	E	W		
N 51°19'41"E	282.19	176.33		220.32		906.11	021.52
S 39°26'59"E	129.30		99.84	82.16		988.27	921.68
S 36°00'01"W	118.60		95.95		69.71	918.56	825.73
S 02°29'06"W	145.04		144.90		6.29	912.27	680.83
N 54°01'54"W	279.84	164.36			226.48	674685.79	475845.19
		340.69	340.69	302.48	302.48		
ERROR OF CLOSURE BEFORE BALANCING						22500	

PROPERTY LINE TRAVERSE						X	Y
BEARING	DIST.	N	S	E	W		
N 35°58'06"E	119.73	96.90		70.32		674951.86	475803.20
N 57°33'19"W	40.08	21.50			33.82	988.36	921.60
S 35°58'06"W	118.60		95.99		69.66	918.70	825.61
S 55°56'10"E	40.02		22.41	33.16		674951.86	475803.20
		118.40	118.40	103.48	103.48		



SUB-SKETCH
SCALE 1"=20'



Edwin M. Sawyett
Henry W. Karp
Edward Apple

DATE: OCT. 16, 1956

NOTE: LOT NUMBERS REFER TO LOTS SHOWN ON FREMONT PARK PLAN FILED IN NORFOLK REGISTRY OF DEEDS PLAN BK. 18, PLAN 822-1896.

PLAN OF LAND
IN NEEDHAM, MASS.
SCALE 1 IN=40 FT. OCTOBER 10, 1956.
ROBERT A. MAC EWEN, CIVIL ENGINEER.
28 THORNTON RD. NEEDHAM, MASS.

I CERTIFY THAT THIS SURVEY WAS MADE IN ACCORDANCE WITH LAND COURT INSTRUCTIONS OF 1950.

Robert A. MacEwen