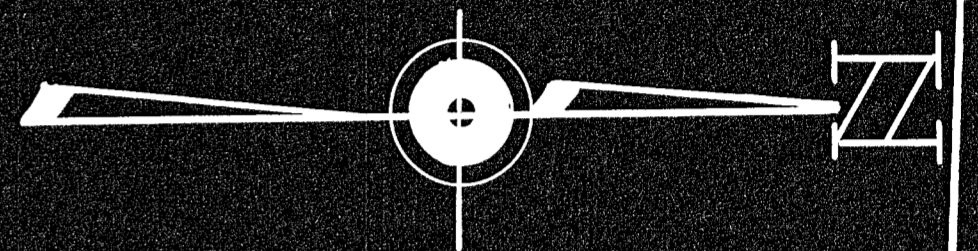
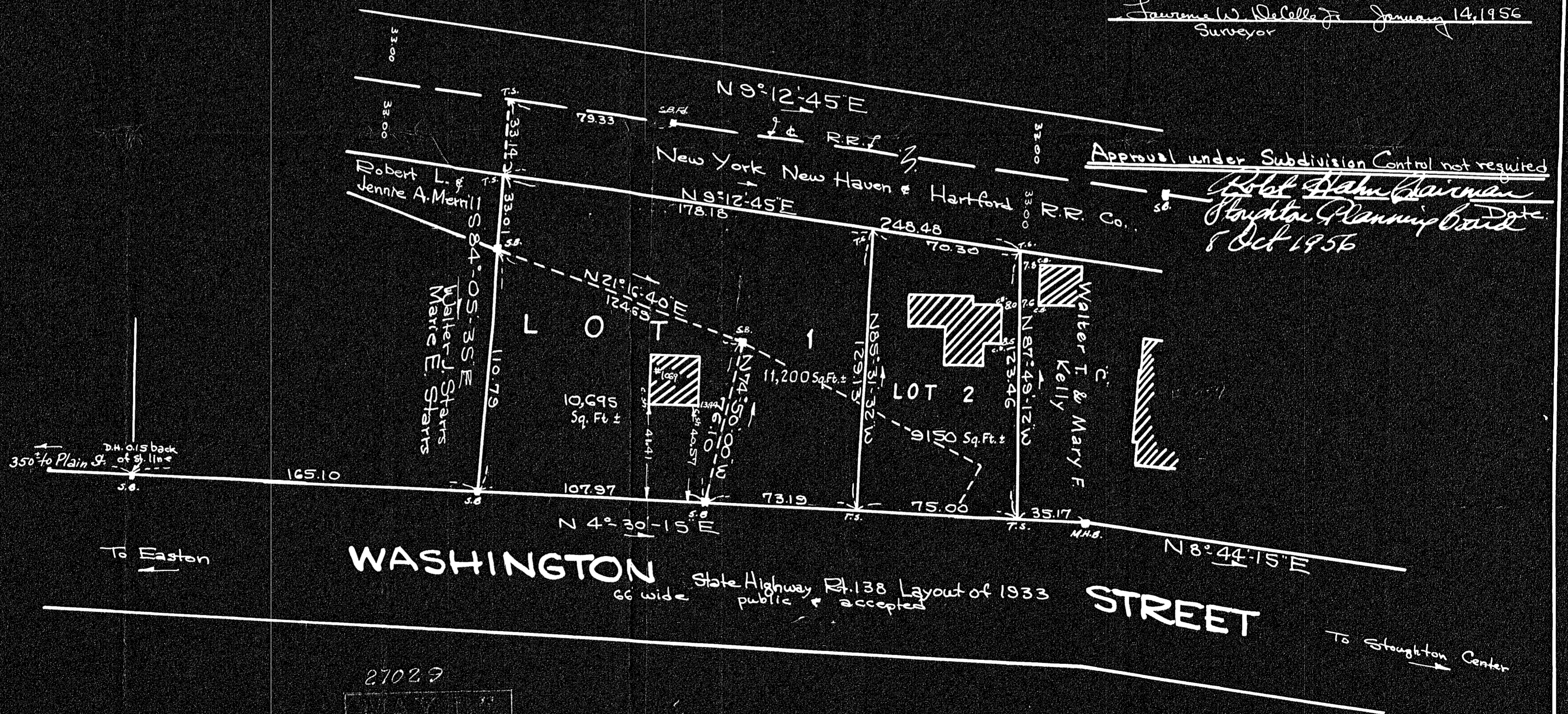
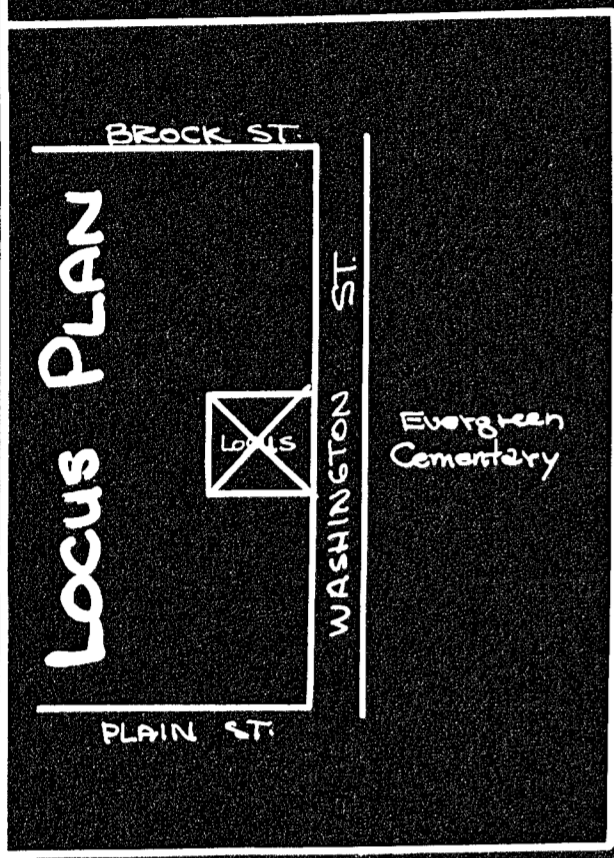


# PLAN OF LAND IN STOUGHTON, MASS..

Scale 1"=40' Jan. 14, 1956  
 Belonging to: Robert L. & Jennie A. Merrill  
 Stoughton, Mass..  
 Surveyed by: L.W. DeCelle Surveyors, Inc.  
 Bonded Land Surveyors  
 1131 North Main Street  
 Randolph, Mass.



I certify that this actual survey was  
 made on the ground on January 12, 1956  
 in accordance with the Land Court  
 Instructions of 1950.  
 Lawrence W. DeCelle Jr. January 14, 1956  
 Surveyor



2702.7  
 MAY 1956  
 10-16-56 R.C.C.  
 NO. 4