

SHORT ST. Public

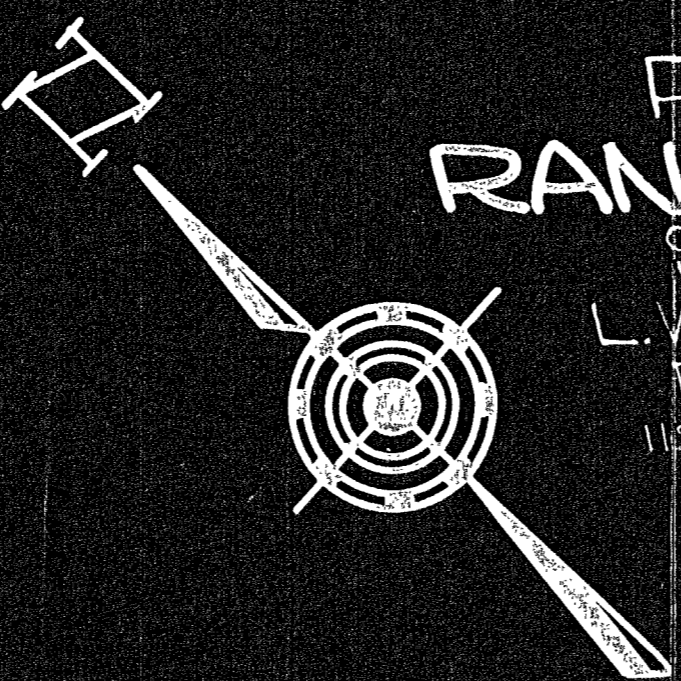
Land Court Case No. 13368

PLAIN ST. public 38 wide

PLAN OF LAND RANDOLPH, MASS..

Scale 1"=20' Feb. 7, 1956

L.W. DeCelle Surveyors, Inc.
Bonded Land Surveyors
101 North Main St., Randolph

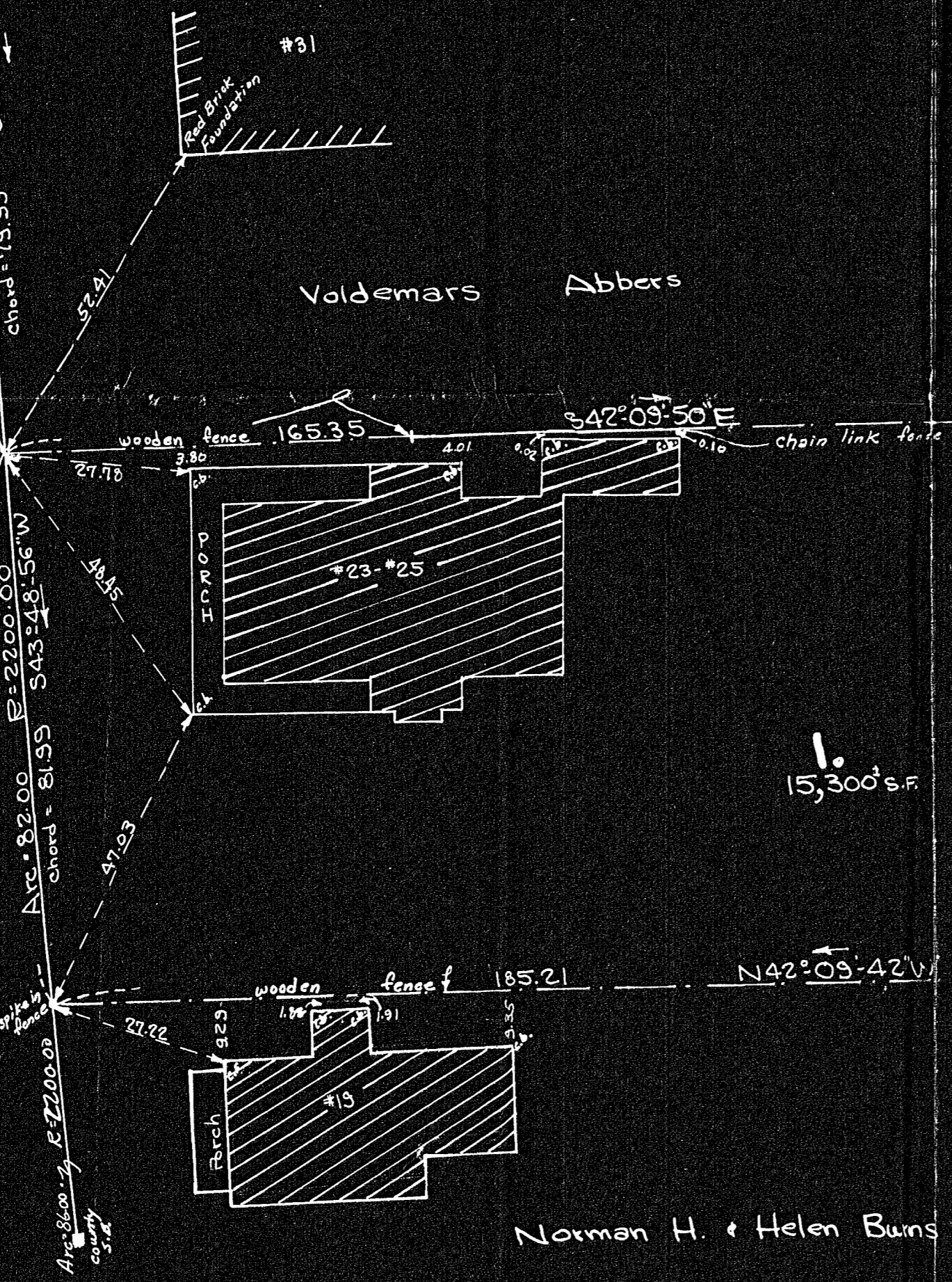


I certify that this actual survey was made on the ground between Feb. 2 & Feb. 4, 1956 in accordance with the Land Court Instructions of 1950.

Lawrence W. DeCelle Jr. Feb. 7, 1956
Surveyor



NORTH STREET
county layout of Dec. 31, 1929
public

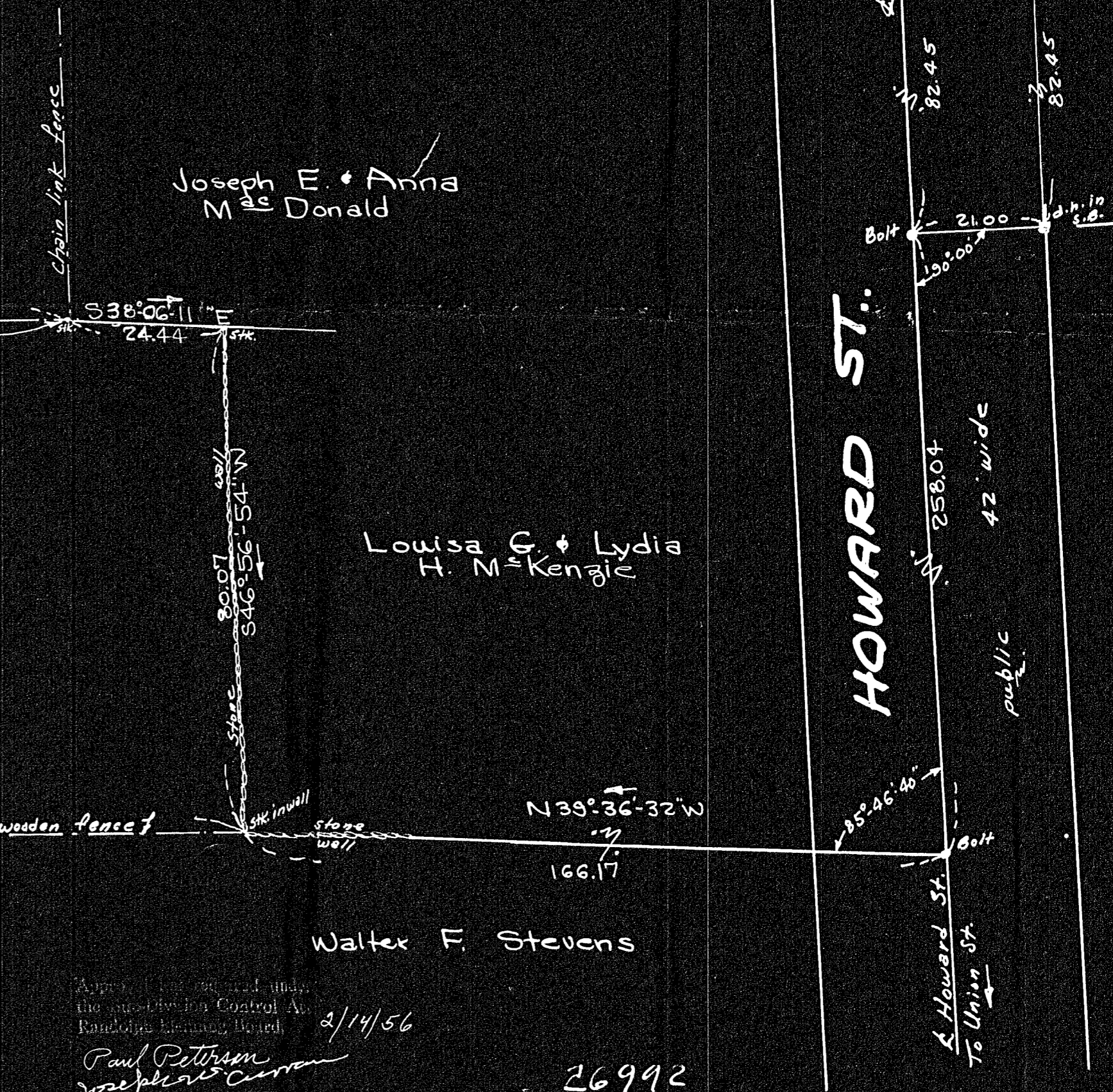


Voldemars Abbers

Joseph E. & Anna M. Donald

Norman H. & Helen Burns

15,300 s.f.



HOWARD ST. public 42 wide

Louisa G. & Lydia H. M. Kenzie

Walter F. Stevens

Approved and ordered under the Massachusetts Control Act, Randolph Planning Board 2/14/56

Paul Peterson
Josephine Curran
Leo D. O'Neill
Lawrence W. DeCelle Jr.

26992
MAY 1956
9/20/56 RR
Nor. Cty Pl. 27

L.C. Case No. 5997 A