

# PLAN OF LAND RANDOLPH, MASS.

Scale 1"=20' June 30, 1956  
L.W. DeCelle Surveyors, Inc.  
Civil Engineers  
1191 North Main St., Randolph

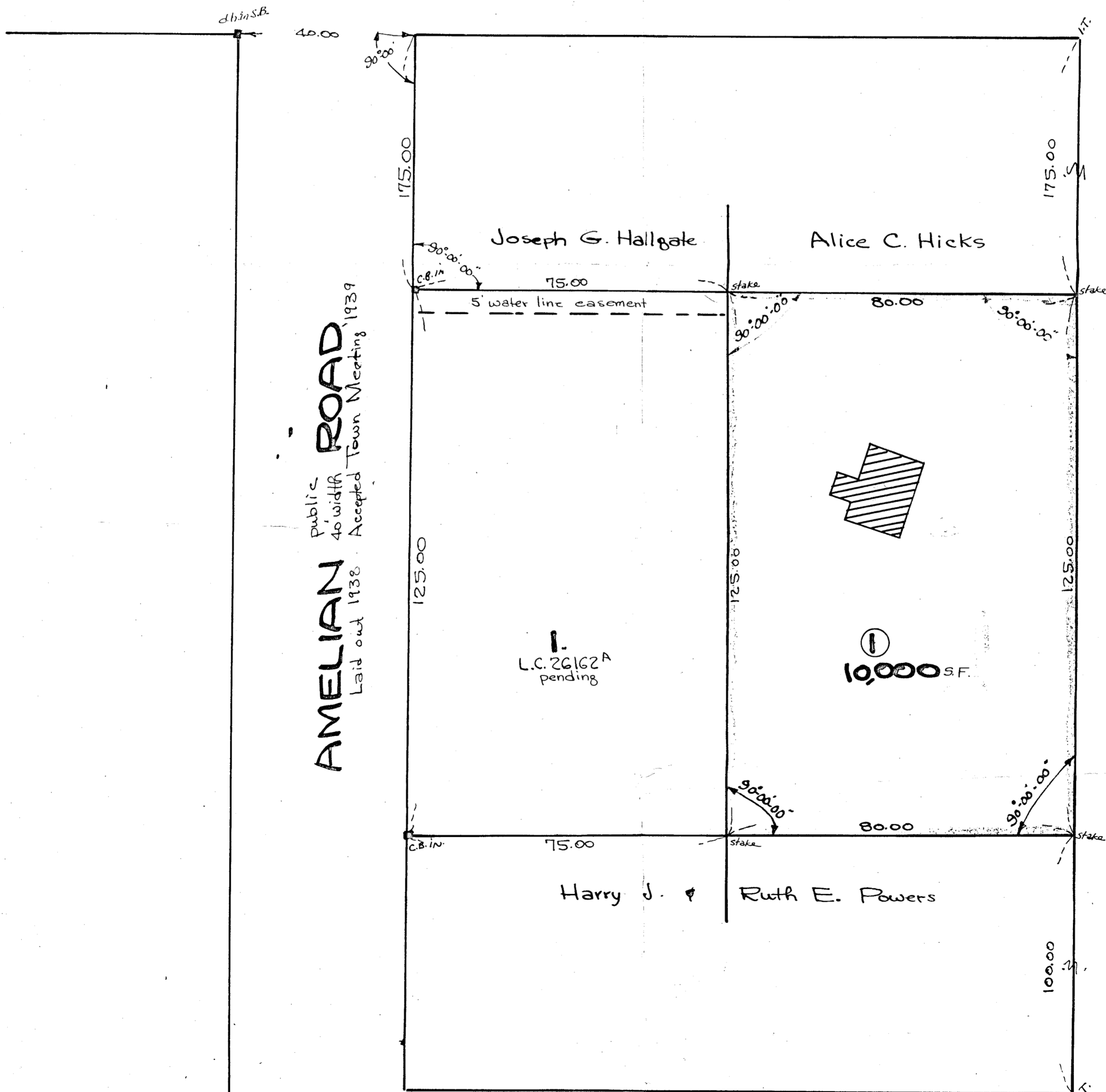
Approved: Randolph Zoning Appeal Board

Chairman: \_\_\_\_\_  
\_\_\_\_\_

I certify that this actual survey was made on  
the ground on July 20, 1955 in accordance with  
the Land Court Instructions of 1950.  
June 30, 1956 Lawrence W. DeCelle  
Surveyor

Date: \_\_\_\_\_

## LINDEN public 30' width ROAD



**AMELIAN ROAD**  
Public 40' width  
Accepted Town Meeting 1939  
Laid out 1938

**JULIAN ROAD**  
private 30' width

Thomas F. McSolla

## PINE private 30' width ROAD