

NORTH CENTRAL AVE. (Public)

NORTH CENTRAL AVE. (Public)

EXETER ST.

BELMONT ST. (Public)

See Ld. Ct # 14437 B

Joseph Pickering

Augustine M. Sullivan
et ux Mary M.

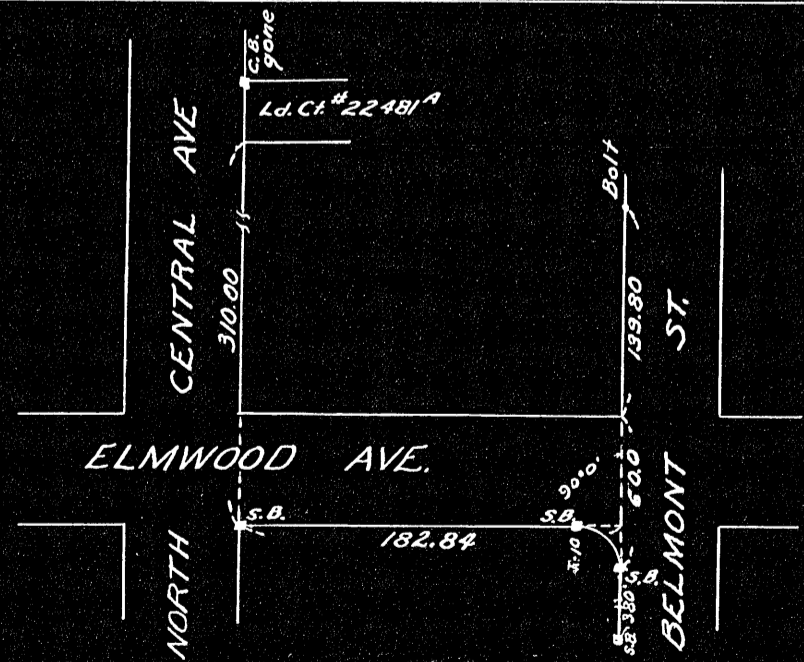
Lot 25
5485 S.F.

Louise Murphy

See Ld. Ct # 14437 B

David C. Usher
et ux Hazel R.

See Ld. Ct. # 22481 A



Plan of Land in Quincy
 Scale 20 feet to an inch
 May 16, 1956
 Ernest W. Branch Inc. Civil Engrs.
 11 Adams Building, Quincy

I certify that this survey was
 made in accordance with Land
 Court instructions of 1950
 May 16, 1956 Robert S. Branch C.E.

Approval Under Subdivision
 Control Law, Not Required
 Date 5-18-56
 Regis J. Harrington
 Director of Planning