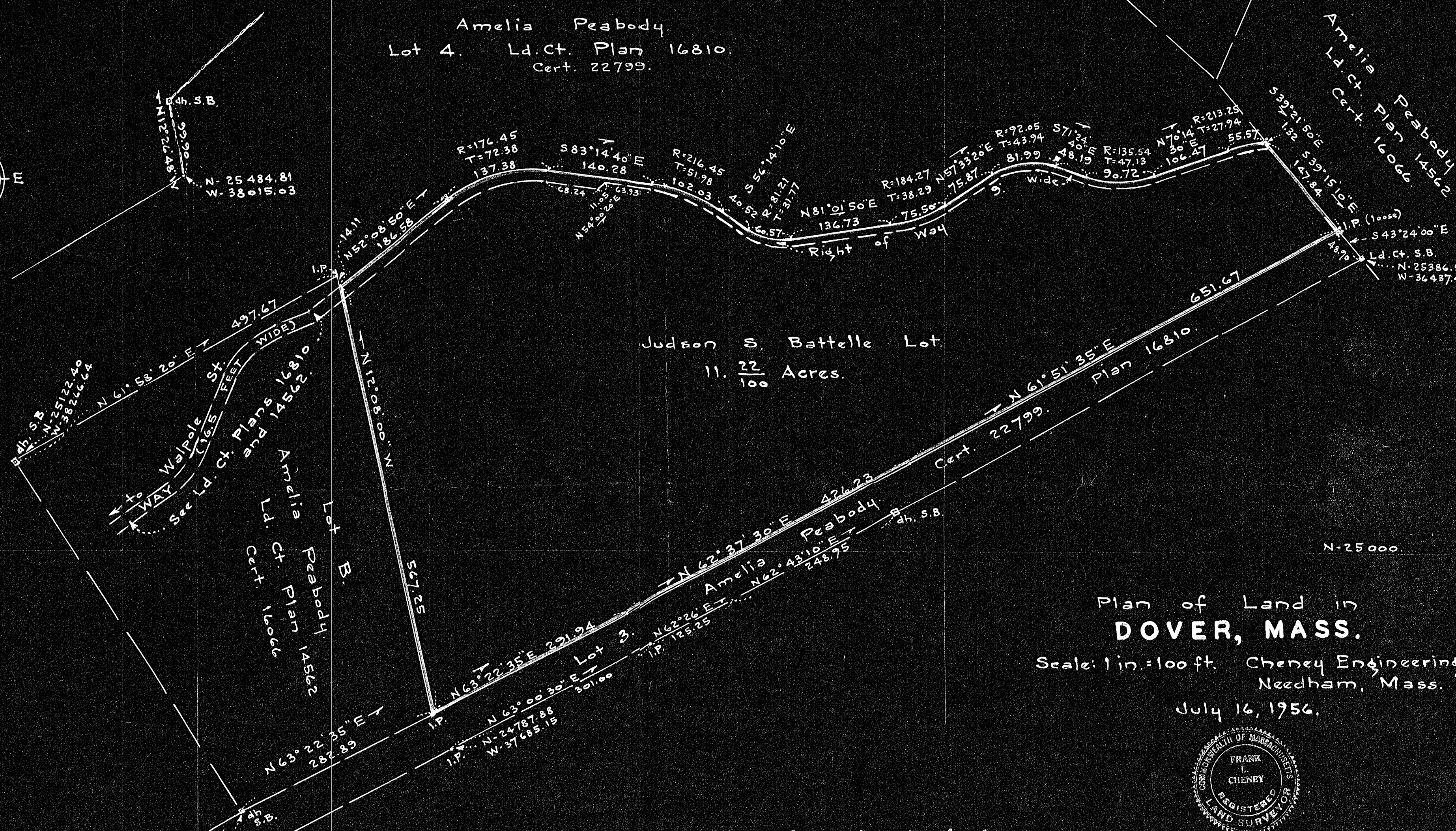


TRUE NORTH
Ld.Ct. 16810 & 14562

WALPOLE ST.
L.C.S.B.
N-25079.41
W-38771.85

WALPOLE ST.
L.C.S.B.
N-24661.11
W-37936.04



Amelia Peabody
Lot 4. Ld.Ct. Plan 16810.
Cert. 22799.

Judson S. Battelle Lot
11. $\frac{22}{100}$ Acres.

Town of Dover
"Caryl Park"

Amelia Peabody
Ld.Ct. Plan 14562
Cert. 16066.

See Ld. Ct. Plans 14562 and 14522
Amelia Peabody
Ld. Ct. Plan 14562
Cert. 16066

Plan of Land in
DOVER, MASS.
Scale: 1 in. = 100 ft. Cheney Engineering Co.
Needham, Mass.
July 16, 1956.



Approval under the Subdivision
Control Law not required
Dover Planning Board
July 18, 1956
Dorcas B. H. [Signature]
John M. Devereux, Jr.
Frederic H. Perry

I certify that this survey was made in
accordance with Land Court instructions
of 1950.
Frank L. Cheney
Civil Engineer

26816
MAY BE FILED
7.23.56
Date By D.R.P.

Not. Co.
Pl-34