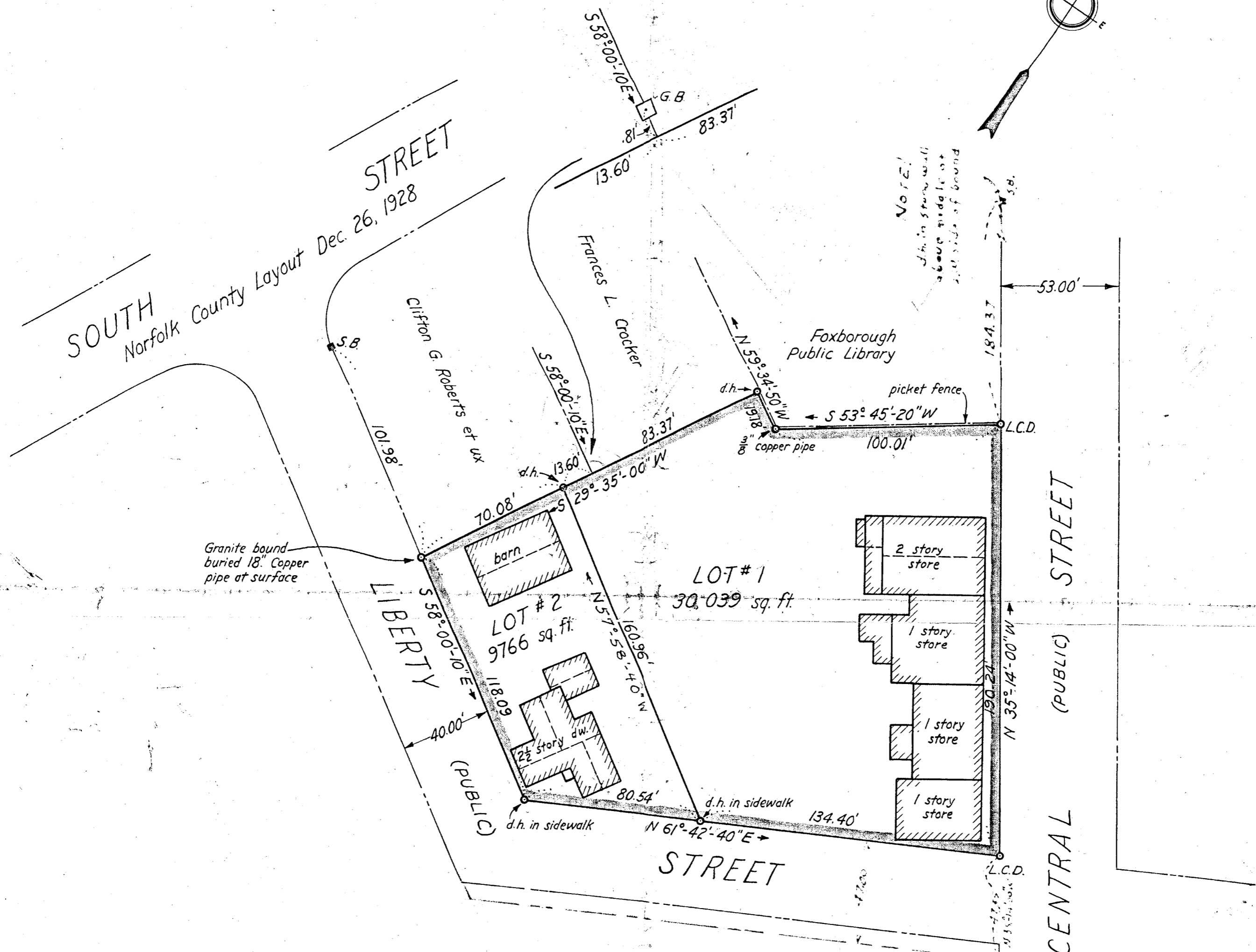


26813A

Approval under Subdivision Control Law not Required

Claude Young  
David K. Bragg  
John P. Lienesch  
James E. Stanley

Foxborough Planning Board  
Date: July 9, 1956.



SEE ADJUSTMENTS ON REVISION  
Re: Conn. to bounds  
Sketch filed 3-15-56  
IN ENGINEERING OFFICE

26813  
MAY BE FILED  
7-23-56  
Date By D.R.P.  
Conn to St Bds.  
Nor. Co. PI-45

DEGREE PLAN  
M. Papers  
Nor. Co. Pl. 45  
Wolcott  
Charlotte CHILSON  
4-3-57

I certify that this actual survey was made on the ground in accordance with the Land Court instructions of 1950 between June 1 1956 and July 1 1956.

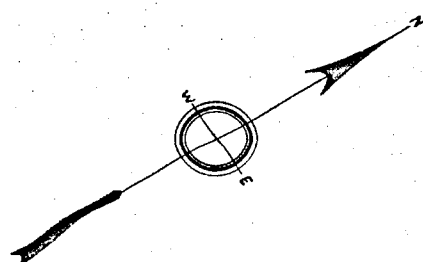
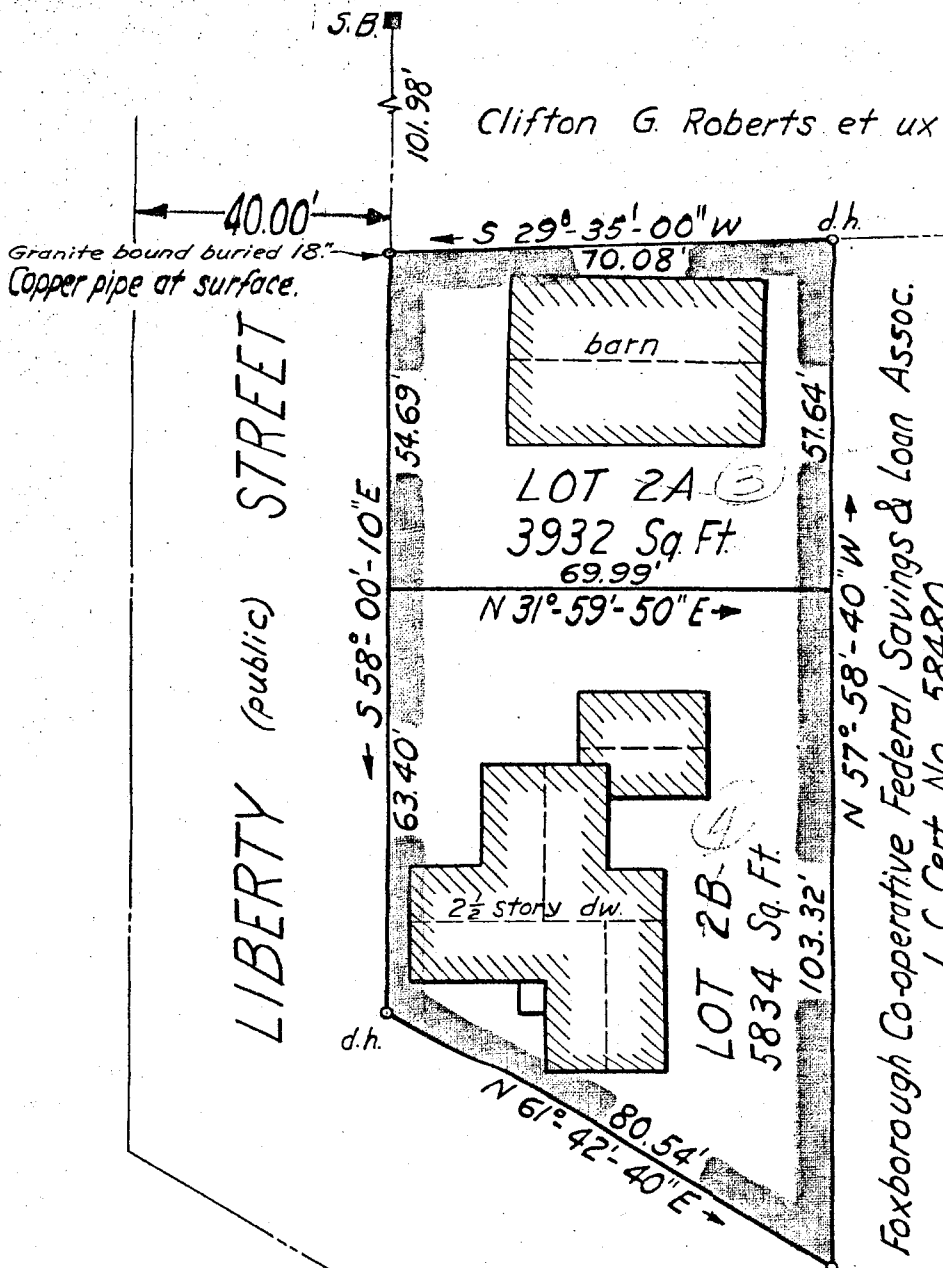
John P. Lienesch  
Surveyor



MAP OF LAND  
IN  
FOXBOROUGH, MASSACHUSETTS  
PROPERTY OF FOXBOROUGH CO-OPERATIVE  
FEDERAL SAVINGS AND LOAN ASSOCIATION

JOHN P. LIENESCH, SURVEYOR  
FOXBOROUGH, MASSACHUSETTS  
SCALE 1" = 40' JULY 1956

26813A



Foxborough Co-operative Federal Savings & Loan Assoc.  
 L.C. Cert. No. 58480

Approval under Subdivision Control Law not Required

James E. Stanley  
 David K. Bragg  
 John P. Lienesch  
 Harold S. Lamson

Foxborough Planning Board  
 Date: May 7, 1957

I certify that this plan was made in accordance with the Land Court Instructions of 1950  
 Date: May 7, 1957  
 John P. Lienesch  
 Foxboro, Mass.

26813 B  
 SUBDIVISION PLAN OF LAND  
 IN  
 FOXBOROUGH, MASSACHUSETTS  
 SCALE 1" = 30'      MAY 1 1957  
 JOHN P. LIENESCH, SURVEYOR  
 FOXBOROUGH, MASS.  
 BEING A SUBDIVISION OF LOT 2  
 SHOWN ON LAND COURT PLAN 26813A