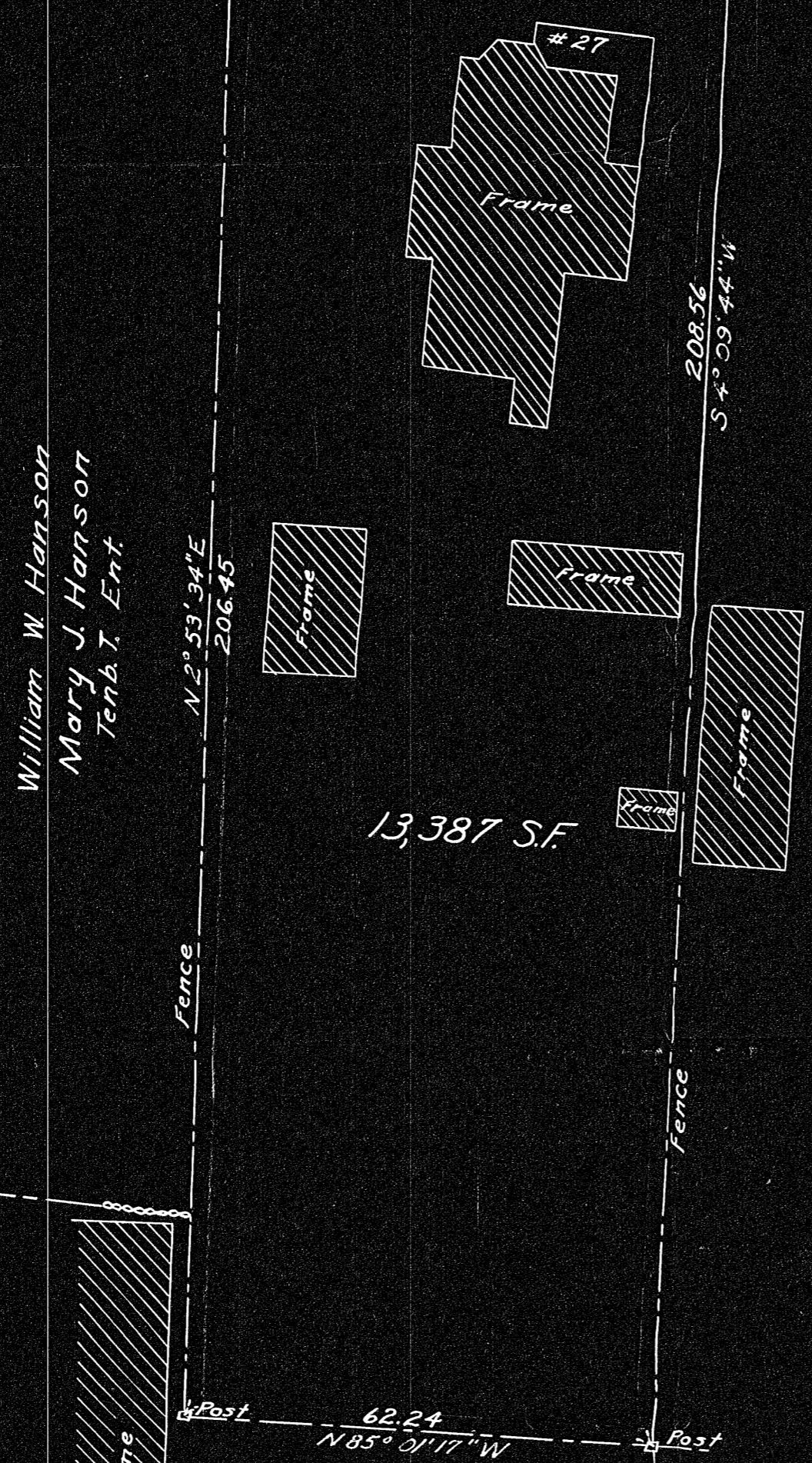


PARK AVE. (State Highway Route 128)

STK 66.80 S86°56'02"E 66.80 STK 44.75 S87°51'46"E 44.75 S.M. 350.66 S88°29'06"E 60.0
 C.B. to be set PC.



William W. Hanson
 Mary J. Hanson
 Tenants Ent.

Olive I. Meacham

13,387 S.F.

South Weymouth Laundry
 and Cleansing Company

Plan of Land in Weymouth
 Scale 20 feet to an inch
 April 27, 1956
 Ernest W. Branch Inc., Civil Engs.
 11 Adams Building, Quincy

I certify that this survey was
 made in accordance with Land
 Court instructions of 1950
 April 27, 1956 Robert A. Booth C.E.

26791

MAY BE
 FILED
 7-17-56
 Date By D.R.P.

Weymouth
 P1-45

1 Bd.
 Conn MHBs w/sta.
 show MHB west of locus

WEYMOUTH PLANNING BOARD
 DATE 7/16/56
 APPROVED FOR LAYOUT ONLY
 SUBJECT TO ARTICLE 89 ANNUAL
 TOWN MEETING 1955 BUT NOT
 SUBJECT TO THE SUBDIVISION
 COMMISSION

Walter A. Ferrara, Chairman

116.52
 See Ld. Ct. # 16517A
 D.H. 9.48