

PLAN OF LAND IN  
WEYMOUTH, NO. CO., MASS.

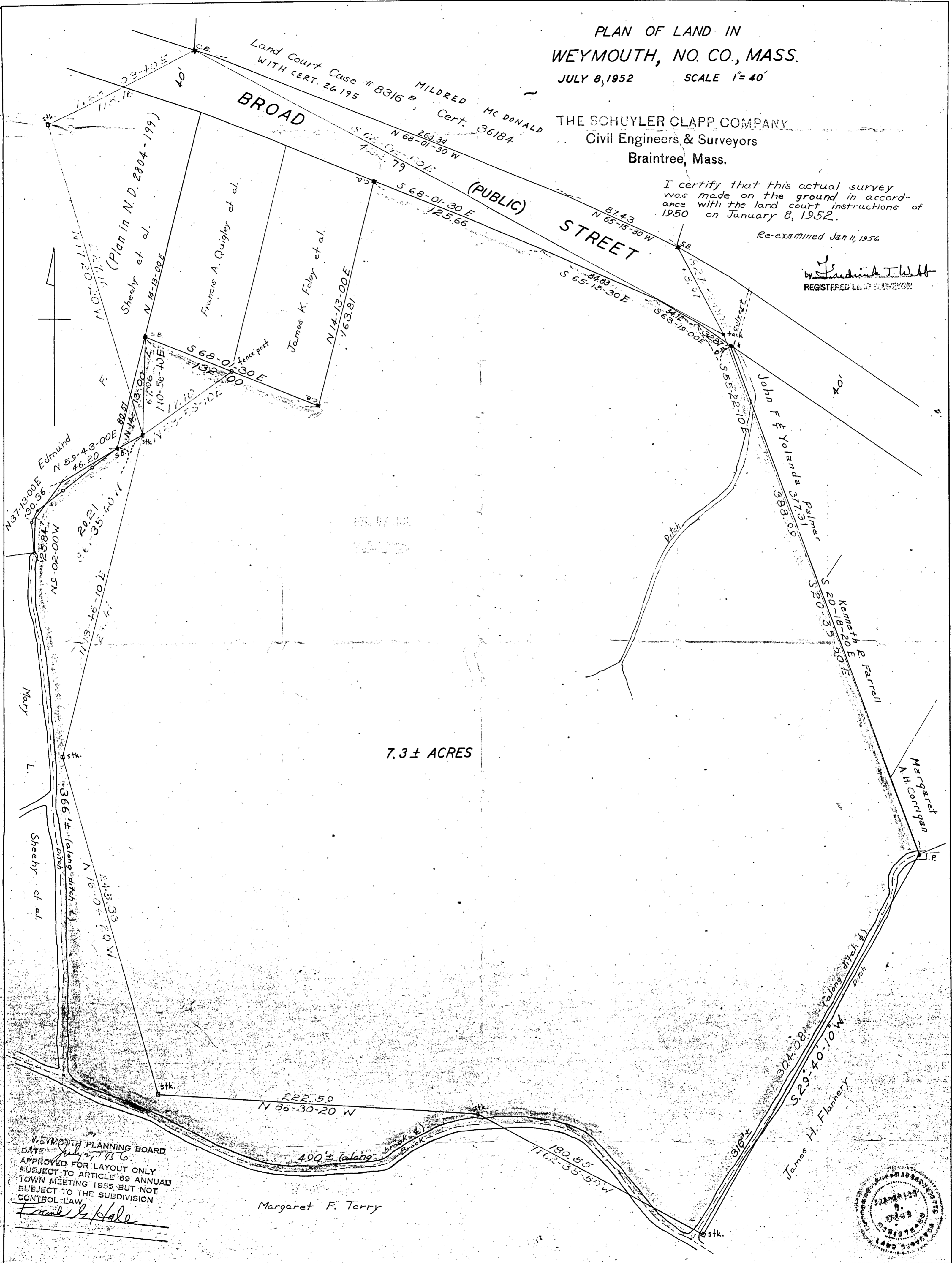
JULY 8, 1952 SCALE 1"=40'

THE SCHUYLER CLAPP COMPANY  
Civil Engineers & Surveyors  
Braintree, Mass.

I certify that this actual survey was made on the ground in accordance with the land court instructions of 1950 on January 8, 1952.

Re-examined Jan 11, 1956

by *Frederick T. Holt*  
REGISTERED LAND SURVEYOR



7.3 ± ACRES

WEYMOUTH PLANNING BOARD  
DATE July 27, 1956  
APPROVED FOR LAYOUT ONLY  
SUBJECT TO ARTICLE 69 ANNUAL  
TOWN MEETING 1955, BUT NOT  
SUBJECT TO THE SUBDIVISION  
CONTROL LAW  
*Frank E. Hale*

Margaret F. Terry



26767 R

JN 5933