

EC-0-13 TRANSIT LINE P. 1 in 14870						Perimeter					
Dist.	N	S	E	W	BRACING	Dist.	N	S	E	W	
N75-03-00E	187.11	48.27	180.77								
S14-57-00E	203.17			400.69							
S43-00-00E	212.82		33.25	270.79					296.24	56.87	
S04-14-00W	164.12		163.66	12.1	12.11	N84-03-24W	110.36	11.43		109.77	
N78-54-17W	460.46	88.65				N84-45-57W	170.75	15.58		170.04	
S84-58-32W	192.95		16.90		452.07	N11-19-27E	184.50	180.90		36.24	
N17-29-38W	224.86	214.46		67.50		N08-25-03E	40.50	40.06		5.93	
	1933.33	410.10	410.10	723.89	713.89				296.24	296.24	
									279.81	279.81	

Note:
Iron Pin
apparently
has not been disturbed
X=5911.78
Y=4113.78

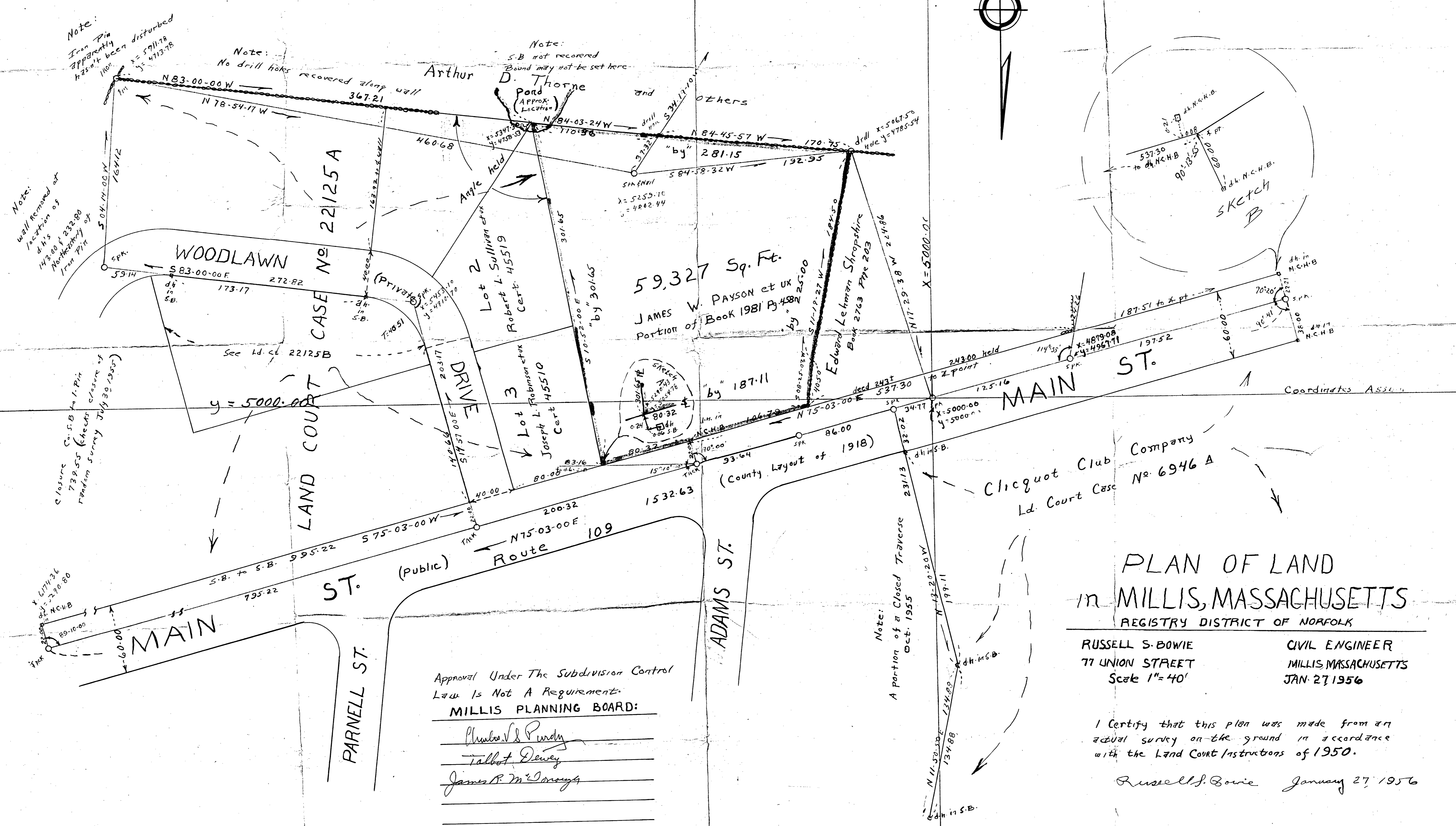
Note:
No drill holes
recovered along wall

Note:
S.B. not recovered
Bound may not be set here

Note:
wall removed at
location of
143.00 & 232.80
No-Measurement of
Iron Pin

Note:
Closure
C.S.B. to I.P.M.
739.55 (check closure of
Random Survey July 30, 1955)

Note:
See also Plan Recorded
Plan Book 129 #544 of 1953
Norfolk Registry of Deeds



PLAN OF LAND
in MILLIS, MASSACHUSETTS
REGISTRY DISTRICT OF NORFOLK

RUSSELL S. BOWIE
77 UNION STREET
Scale 1" = 40'

CIVIL ENGINEER
MILLIS, MASSACHUSETTS
JAN. 27, 1956

I Certify that this plan was made from an actual survey on the ground in accordance with the Land Court Instructions of 1950.

Russell S. Bowie January 27, 1956

Approval Under The Subdivision Control Law Is Not A Requirement.

MILLIS PLANNING BOARD:

Charles L. Purdy
Talbot Dewey
James P. McDonough

JANUARY 30 1956