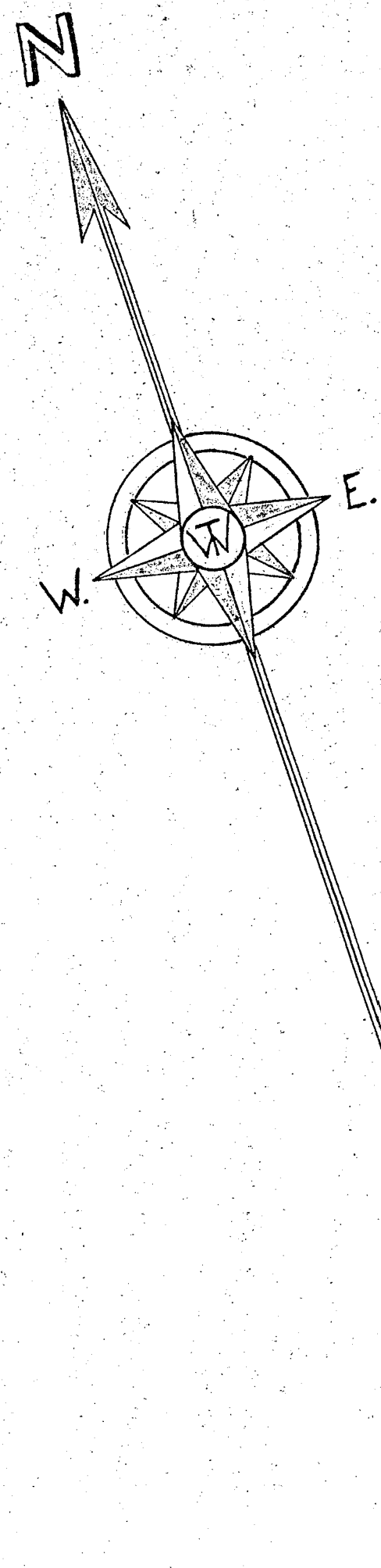
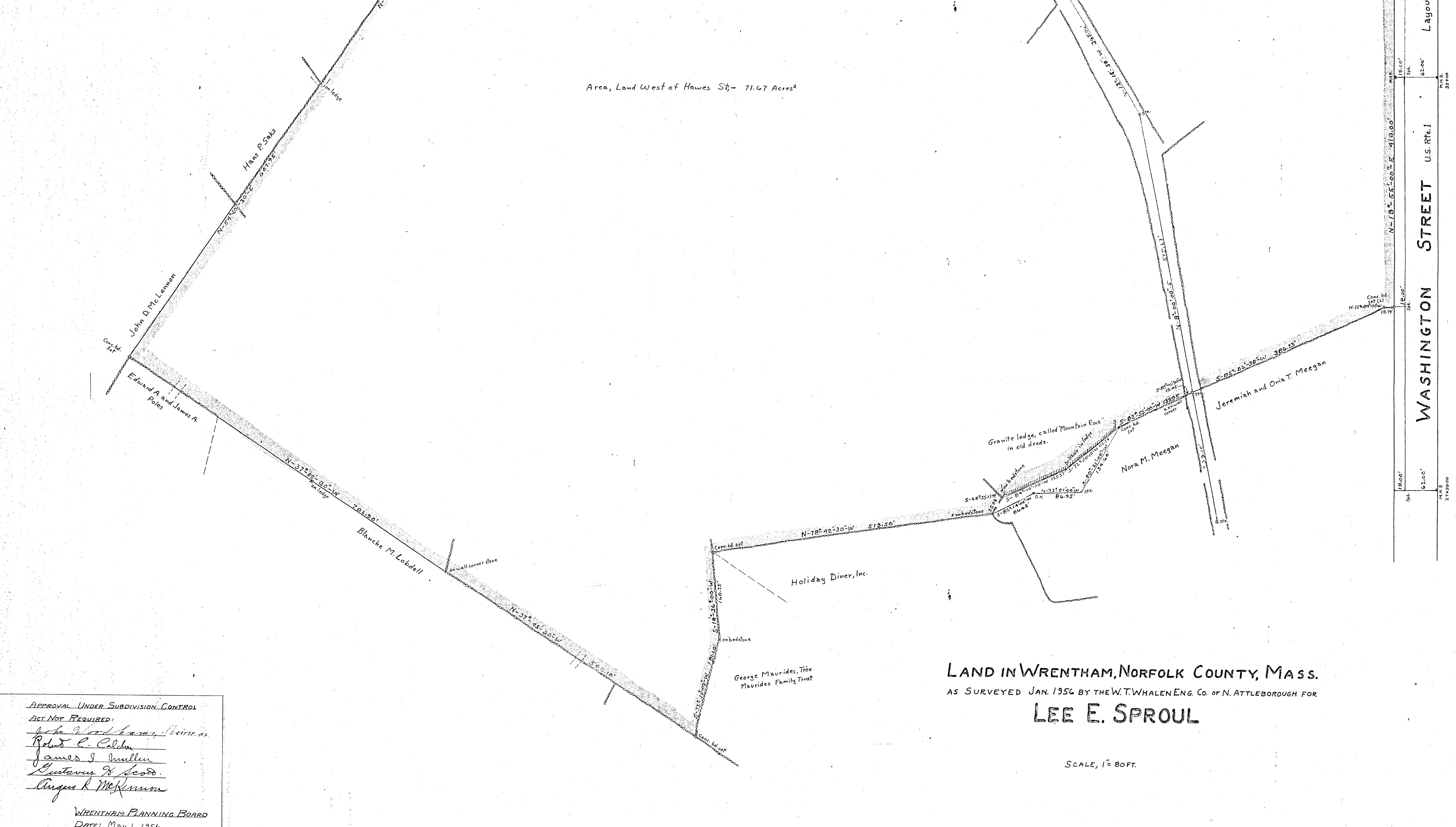


I certify that this actual survey was made on the ground in accordance with the Land Court Instructions of 1950, between Nov. 15, 1955 and Jan. 14, 1956. W. Whalen Eng. Corp. Jan 15, 1956



Bearing	Length	Lat. N	Lat. S	Dep. E	Dep. W
S-82-01-30-W	13.01		11.130		11.971
S-83-51-00-W	139.35		14.952		139.149
S-79-31-00-W	174.60		85.888		163.537
N-71-00-00-W	86.35	26.845			81.353
S-81-14-00-W	86.65		11.710		85.855
N-78-41-00-W	513.50	161.733			503.443
S-74-32-30-W	168.75		155.829		50.516
S-33-15-00-W	18.150		18.150		33.300
N-37-42-30-W	448.10	433.348			33.503
N-37-03-30-W	703.00	460.198			414.516
N-34-10-00-E	607.05	358.408		433.209	
N-31-03-30-E	917.18	854.906		459.108	
N-54-03-10-E	189.27	111.510		153.290	
N-37-26-00-W	325.50	165.074		204.618	
N-52-51-00-E	167.30	83.707		133.913	
N-52-41-00-E	128.00	167.183		137.114	
N-70-21-00-E	205.20	68.891		193.405	
N-93-56-00-E	270.10	124.512		187.501	
S-80-02-00-E	248.00		41.624	236.071	
S-8-12-00-W	472.11		472.128		68.432
S-13-17-00-W	528.38		587.343		132.603
S-22-12-00-E	332.19		287.703	166.068	
S-12-15-00-E	365.04		255.240	83.725	
S-8-00-00-W	51.537		51.537		71.710
		2671.372	2671.371	2376.776	2316.172
S-63-56-00-W	370.10		194.813		187.401
S-70-23-00-W	140.10		68.893		133.220
S-55-43-00-W	120.10		167.183		153.148
S-50-17-00-W	167.10		83.777		158.914
N-37-35-00-W	504.68	325.242			382.809
N-54-31-00-E	321.50	186.683		261.216	
N-47-13-00-E	203.25	127.677		149.872	
N-51-40-00-E	161.95	52.023		60.031	
S-53-00-00-E	413.60	308.938		411.705	
S-45-04-00-E	93.37		65.146	60.880	
S-3-32-00-E	471.70		471.884	27.703	
S-9-04-00-W	101.00		101.000		16.079
		1684.150	1684.150	1007.311	1007.310

Bearing	Length	Lat. N	Lat. S	Dep. E	Dep. W
S-10-01-03-W	906.70		850.776		200.413
S-70-50-00-W	418.00		352.424		135.811
N-71-04-30-W	18.12	5.783			17.818
S-85-02-30-W	386.23		33.382		384.786
N-8-00-00-E	516.17	516.176			71.710
N-10-15-00-W	365.00	365.350			83.700
N-25-53-00-W	332.19	287.703			166.068
N-13-17-00-E	255.51	231.483		68.835	
S-20-17-00-E	220.96		39.467	218.416	
S-83-01-20-E	264.97		11.301	233.668	
S-80-41-00-E	72.15		12.791	78.112	
S-66-97-00-E	138.20		75.210	161.217	
S-76-47-30-E	62.75		12.197	61.523	
S-19-12-30-E	112.73		20.307	110.914	
N-84-21-30-E	176.78	176.780		175.944	
S-68-33-00-E	40.73		16.723	42.503	
		1467.324	1467.324	1083.106	1083.101



Area, Land West of Hawes St. = 71.67 Acres*

Area, Land East of Hawes St. = 18.87 Acres*

LAND IN WRENTHAM, NORFOLK COUNTY, MASS.
AS SURVEYED JAN. 1956 BY THE W.T. WHALEN ENG. CO. OF N. ATTLEBOROUGH FOR
LEE E. SPROUL

SCALE, 1" = 80 FT.

APPROVAL UNDER SUBDIVISION CONTROL
NOT REQUIRED:
John W. ...
Robert C. ...
James S. ...
Lester J. ...
Angus R. ...
WRENTHAM PLANNING BOARD
DATE: May 1, 1956

Also called Norfolk & Bristol Twp. or Boston & Fairbuck Twp., etc.
Layout of Jan. 6, 1931

WASHINGTON STREET U.S. RT. 1