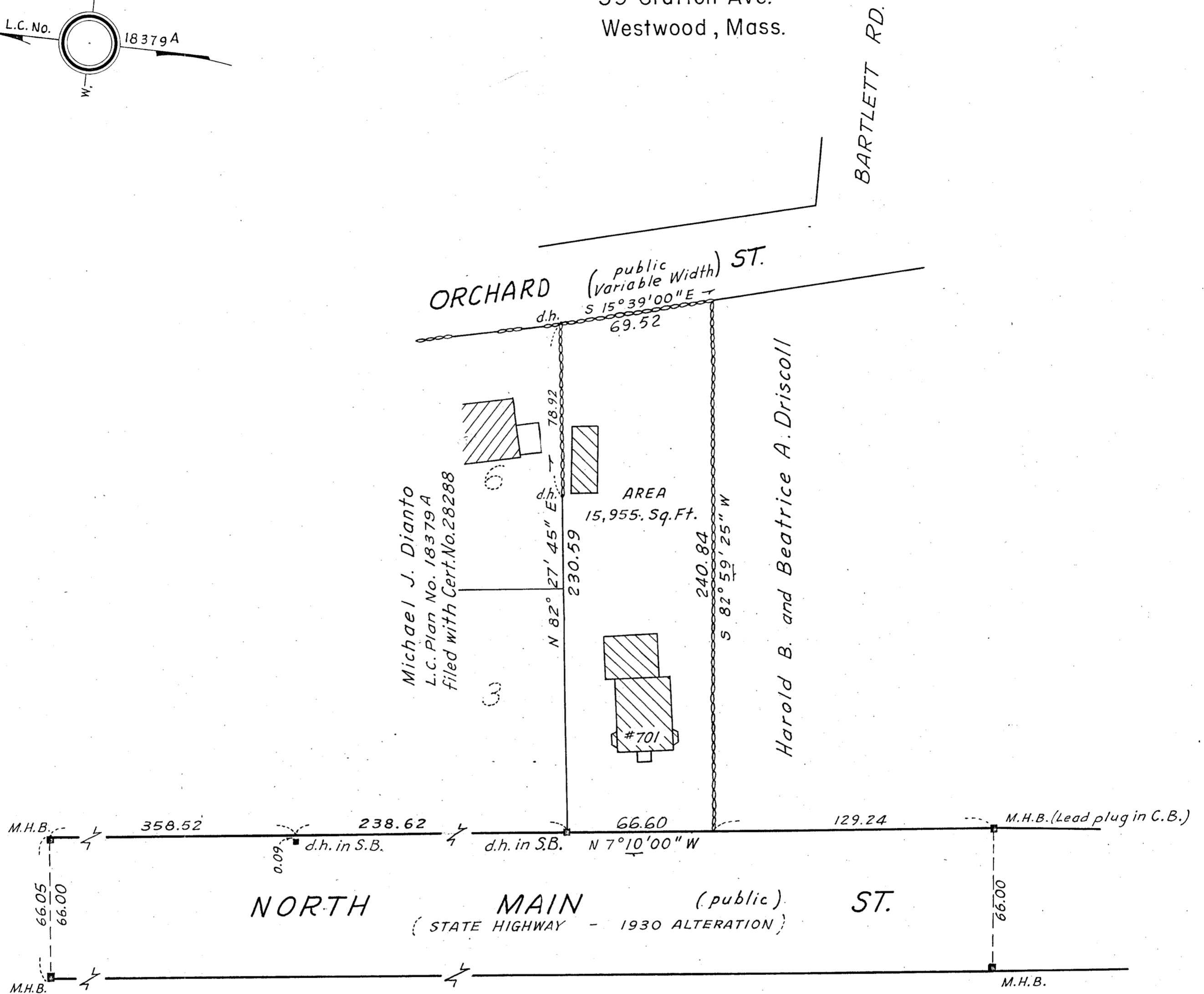
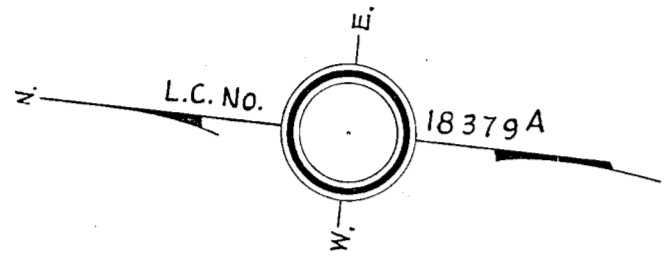


PLAN OF LAND IN RANDOLPH, MASS.

Scale 40 feet to an inch. March 9, 1956

ANDERSON and HOLMAN, Civil Engineers & Surveyors
59 Grafton Ave.
Westwood, Mass.



I certify that this actual survey was made on the ground
in accordance with the Land Court Instructions of 1950
on or between Feb. 2, 1956 and Feb. 23, 1956.

Date March 9, 1956.

Clifton D. Holman, Jr.
Surveyor

Approval under the Subdivision Control Law
is not required.

Town of RANDOLPH PLANNING BOARD.

Date _____