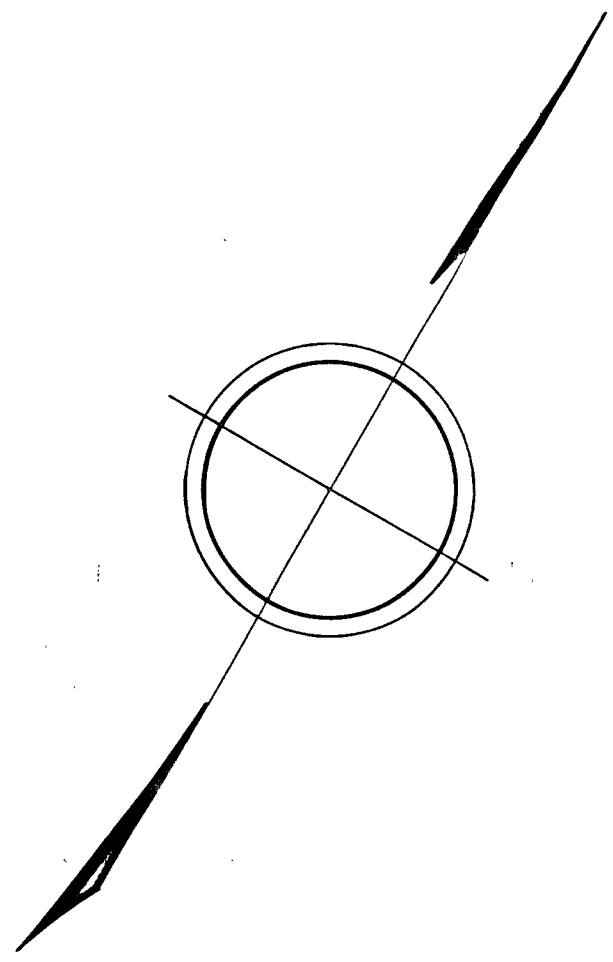


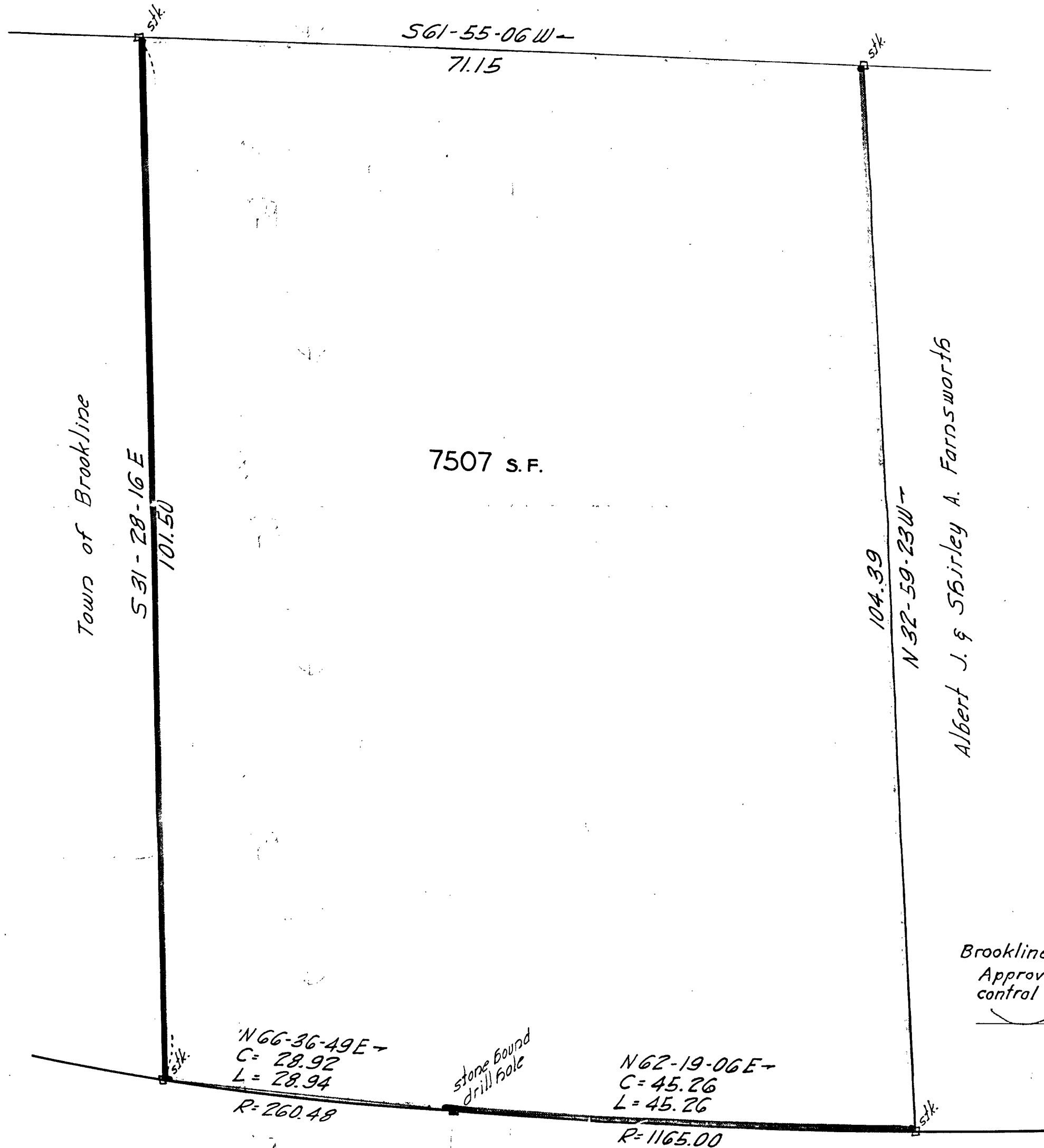
DIST.	BEARING	N.	S.	E.	W.
45.26	N62-19-06 E	21.02		40.08	
104.39	N32-59-23 W	87.56			56.84
71.15	S61-55-06 W		33.49		62.77
101.50	S31-28-16 E		86.57	52.99	
28.92	N66-36-49 E	11.48		26.54	
		120.06	120.06	119.61	119.61



PLAN OF LAND
IN
BROOKLINE MASS.

SCALE: 1 IN. = 10 FT. MAR. 12, 1956.
WILLIAM J. FORD JR. CIVIL ENG'R.
302 WALNUT ST. NEWTONVILLE
MASSACHUSETTS

Eleutheria Meledones



Brookline Planning Board, April 4, 1956
Approval under the subdivision
control law, not required.
[Signature]
Secretary and Engineer



CRAFTSLAND (PUBLIC) ROAD (40 FT. WIDE)

26556
MAY BE FILED
Date 4-9-56 By F.J.C.

27145 Inc. 2040 on st. Brookline St. 997 carries 100 ft come

I certify that this actual survey was made on the ground in accordance with Land Court instructions of 1950.
Date: March 12, 1956.
[Signature]
surveyor